

# World Class Customer Service

For more than 100 years, the dedicated people of Rexnord have delivered excellence in quality and service to our customers around the globe. Rexnord is a trusted name when it comes to providing skillfully engineered products that improve productivity and efficiency for industrial applications worldwide. We are committed to exceeding customer expectations in every area of our business: product design, application engineering, operations, and customer service.

Because of our customer focus, we are able to thoroughly understand the needs of your business and have the resources available to work closely with you to reduce maintenance costs, eliminate redundant inventories and prevent equipment down time.

Rexnord represents the most comprehensive portfolio of power transmission and conveying components in the world with the brands you know and trust.

Rexnord and TableTop are registered trademarks of Rexnord Industries, LLC. All rights reserved.

**Rexnord X-Line Stainless Steel TableTop® Chain** | 2007  
Smooth out your production flow with  
extreme quality chain technology from Rexnord



## WORLDWIDE CUSTOMER SERVICE

### AUSTRALIA

Rexnord Australia Pty. Ltd.  
Picton, New South Wales  
Phone: 61-2-4677-3811  
Fax: 61-2-4677-3812

### BRAZIL

Rexnord Correntes Ltda.  
Sao Leopoldo - RS  
Phone: 55-51-579-8022  
Fax: 55-51-579-8029

### CANADA

Rexnord Canada Ltd.  
Scarborough, Ontario  
Phone: 1-416-297-6868  
Fax: 1-416-297-6873

### CHINA

Rexnord China  
Shanghai  
Phone: 86-21-62701942  
Fax: 86-21-62701943

### FLATTOP EUROPE

Rexnord FlatTop Europe b.v.  
's-Gravenzande, The Netherlands  
Phone: 31-174-445-111  
Fax: 31-174-445-222  
After Hours/Emergency Phone:  
31-174-445-112

Rexnord Marbett®, S.r.l  
Correggio (RE), Italy  
Phone: 39-0522-639333  
Fax: 39-0522-637778

RMCC Deutschland Kette GmbH  
Aßlar-Werdorf, Germany  
Phone: 49-6443-83140  
Fax: 49-6443-831420

Rexnord FlatTop France  
Orly Cedex  
Phone: 33-1-4173-4220  
Fax: 33-1-4173-4229

### MEXICO

Rexnord S.A. de C.V.  
Queretaro, Qro.  
Phone: 52-442-218.5000  
Fax: 52-442-218-1090

### UNITED STATES

Customer Service  
Phone: 1-866-REXNORD  
(1-866-739-6673)  
Fax: 1-614-675-1898  
E-mail: rexncds(state)@rexnord.com  
Example: rexncdcsOhio@rexnord.com

Rexnord FlatTop North America  
Grafton, Wisconsin  
Phone: 1-262-376-4700  
Fax: 1-262-376-4720

Rexnord International - Power Transmission  
Milwaukee, Wisconsin  
Phone: 1-414-643-2366  
Fax: 1-414-643-3222  
E-mail: international2@rexnord.com

### ALL COUNTRIES NOT LISTED

Rexnord FlatTop Europe b.v.  
's-Gravenzande, The Netherlands  
Phone: 31-174-445-111  
Fax: 31-174-445-222

After Hours/Emergency Phone:  
31-174-445-112



Rexnord FlatTop Europe b.v. flattopeurope@rexnord.com www.rexnordflattop.com  
Rexnord FlatTop North America 1272 Dakota Drive Grafton, WI www.rexnord.com  
©2007 Rexnord Industries, LLC

8rxLINEpb-en 02/06 Delzer Litho Printed in USA

Rexnord® MCC® Marbett®





# Smooth Production Flow

Smooth container flow at high speeds is essential to boosting line efficiency and preventing product damage. Especially when moving from multiple to single lanes or the reverse, the gentle slide of bottles across ultra-flat, highly polished stainless steel Rexnord® chain can contribute significantly to the quality and efficiency of your beverage production line.

Rexnord® X-Line stainless steel chains with extreme precision flatness and superior sliding properties, together with polished hinge eyes, are the best choice for pressureless combiners / inliners and for other applications requiring exceptionally smooth product transfer.

Smooth out your production flow with extreme quality chain technology from Rexnord.



**New Rexnord X-Line Series steel chains at a brewery inliner**

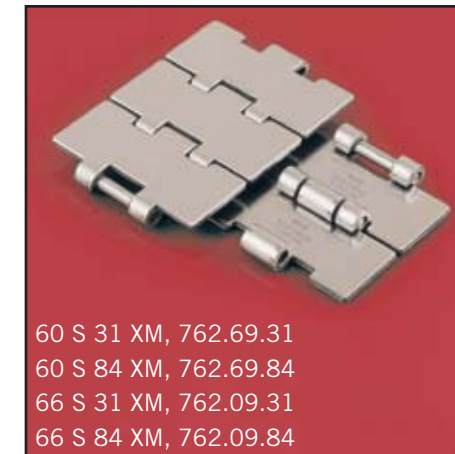
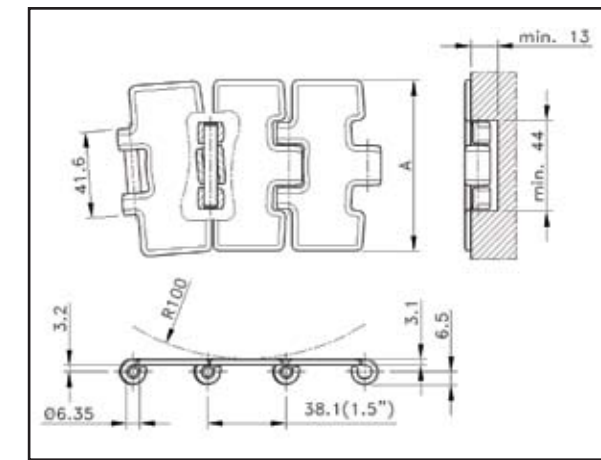
Pressureless combiners/inliners at infeed moving containers from multi-lanes to single flow and at discharge slowing high speed single lane back to mass flow require absolute flatness and superior sliding of the conveying chain.

## Choosing Rexnord® X-Line stainless steel TableTop® chains results in:

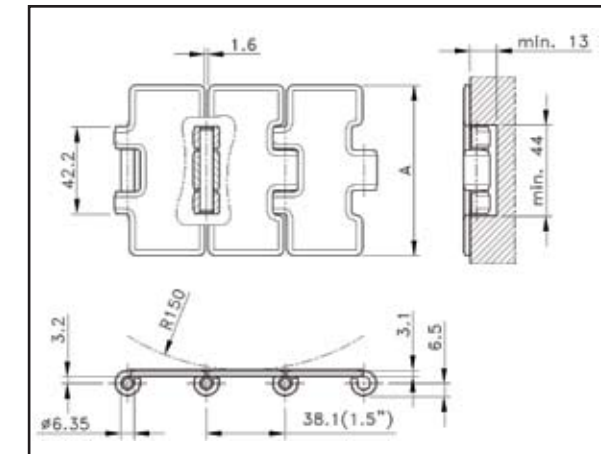
- Up to 75% fewer fallen bottles
- Higher line efficiency from decreased downtime
- Less bottle abrasion and broken bottles
- The highest wear resistance up to 5 times longer chain life for the 66-Series



60 M 31 XM, 767.69.31  
60 M 84 XM, 767.69.84  
66 M 31 XM, 767.09.31  
66 M 84 XM, 767.09.84

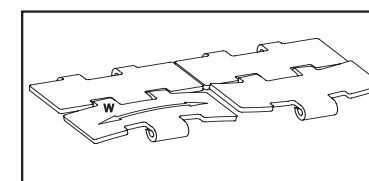
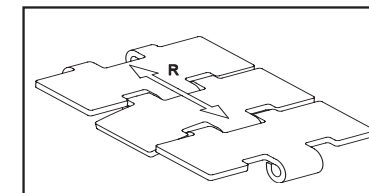


60 S 31 XM, 762.69.31  
60 S 84 XM, 762.69.84  
66 S 31 XM, 762.09.31  
66 S 84 XM, 762.09.84



## X-Line Design Features

- Extreme flatness of 0.08 mm (0.003"). Over 50% tighter tolerances
- Narrow 1.6 mm (0.06") gap between links
- Fully chamfered plate edges
- Polished hinge eyes for less wear and better sliding
- Perfectly round hinge eyes to prevent pin run out
- Working load 6000 N max.
- X-Line for all 60-Series and 66-Series 84 mm and 3.25" wide chains



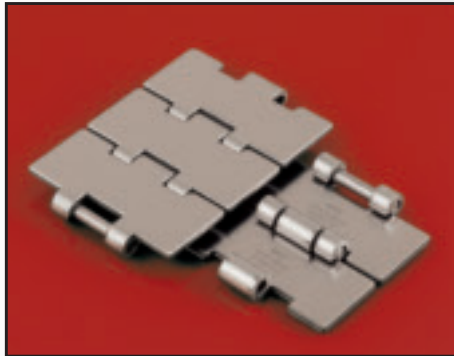
## Extreme Flatness Feature

Rexnord®'s extreme flatness quality results from superior chain design and tight production control.

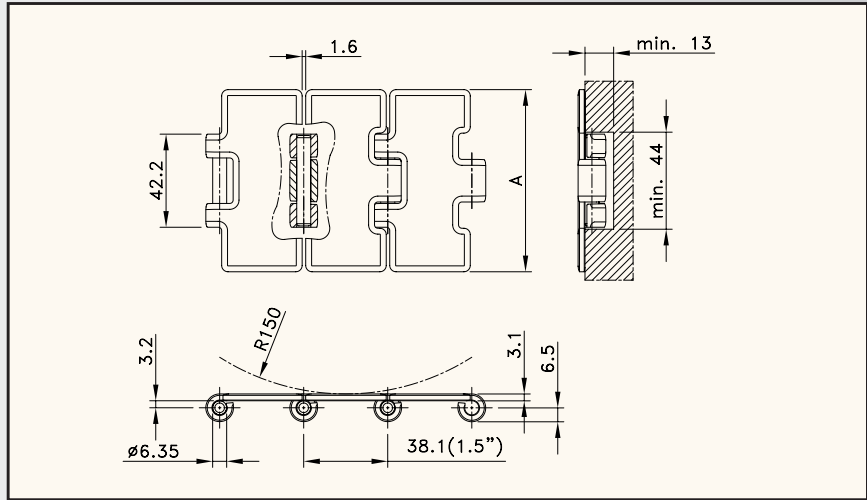
With precise measurements to tight tolerances in the width (W) direction and an exclusive convex top design, Rexnord achieves exceptional lateral flatness for smooth sideways sliding from one chain to the next.

And, Rexnord's extreme flatness in a running (R) direction produces smooth product movement from one chain link to the next, enhancing product stability and reducing product tippage.

# STEEL SLATBAND CHAINS



**STRAIGHT RUN  
SINGLE HINGE  
X-LINE, MAX-LINE**

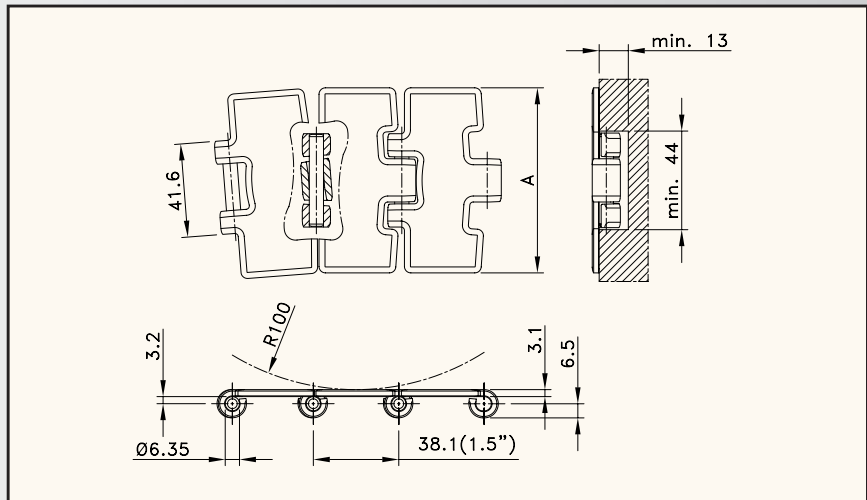


Chain type	Code nr.	Plate width		Weight	Surface flatness (max.)	Ground surface	Polished hinge eyes	Working load (max.)
		A						
		mm	inch					
60-SERIES								
60 S 31 XM	762.69.31	82.5	3.25	2.61	0.08	no	yes	6000
60 S 84 XM	762.69.84	84.0	3.30	2.63				
66-SERIES								
60 S 31 XM	762.09.31	82.5	3.25	2.50	0.08	no	yes	6000
60 S 84 XM	762.09.84	84.0	3.30	2.52				

Standard length: 3.048 m - 10 feet (80 links)



**MAGNETFLEX®  
SINGLE HINGE  
X-LINE, MAX-LINE**



Chain type	Code nr.	Plate width		Weight	Surface flatness (max.)	Ground surface	Polished hinge eyes	Working load (max.)
		A						
		mm	inch					
60-SERIES								
66 M 31 XM	767.69.31	82.5	3.25	2.61	0.08	no	yes	6000
66 M 84 XM	767.69.84	84.0	3.30	2.63				
66-SERIES								
66 M 31 XM	767.09.31	82.5	3.25	2.50	0.08	no	yes	6000
66 M 84 XM	767.09.84	84.0	3.30	2.52				

Standard length: 3.048 m - 10 feet (80 links)

Sideflex radius min. 500 mm.