

PRODUCT LIST

INDUSTRIAL CHAINS

STANDARD CHAINS

- 4** Standard roller chain DIN 8187
- 9** Standard roller chain with anti corrosion systems DIN 8188
- 11** Roller chains with straight plates
- 13** Side bow chains
- 14** Short pitch conveyor chain with attachments
- 17** Short pitch conveyor chain with extended pins
- 18** Double pitch conveyor chains
- 25** Hollow pin chains

SPECIALITIES CHAINS

- 32** O´ring chains
- 33** Roller chains with rubber top attachments
- 36** Roller chains with U type attachments
- 37** Sharp top chains
- 40** Leaf chains
- 43** Gripper chains
- 47** Sticker chains



iRiS
chains

Since

1935

manufacturing

High-quality chains

A company which has developed over 80 years has a story. One year before starting the civil war Spain, IRIS chains established in Eibar, in the north of Spain. It was such a harsh time that IRIS started to make chains for bicycles. IRIS very early started to make exports of the bicycle chains to the world. However, IRIS did not stop there, and during 50's and 60's start to manufacture motorcycle and industrial chains. The company greatly increased product offerings, and most importantly, its endless pursuit for the better quality brought the company to a new level. Today IRIS is well known as one of the best chain supplier, recognized world-wide, and its offering a complete range of chains.

Our customer orientation in all areas lead to close cooperation with our customers and suppliers as well as to joint technical developments. Customer satisfaction is our goal. For this reason, we have experienced and highly qualified employees, with technical capability to reinforce our strategy of customer proximity.



Standard Chains

IRIS Standard precision roller Chain is designed and manufactured to meet or exceed ANSI, ISO, DIN and BS requirements. Commonly used for power transmission purposes, it can be found in a variety of industrial drive systems. IRIS chain engineered and built for high performance even in the toughest applications.

IRIS conveyor chains offer the user the benefits of parallel and synchronous running, extremely precise positioning, quiet running and significantly higher breaking resistance than the norm. Also available with nickel-plating, Delta tone, and stainless steel. For higher loads, multiple-width stands are available.

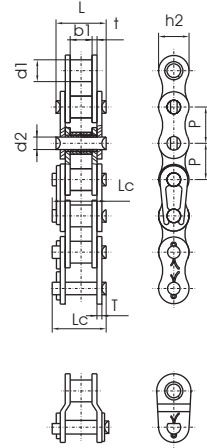


Standard roller chain DIN 8187

B SERIES

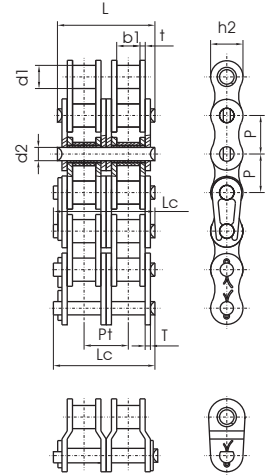
Simplex roller chains

DIN/ISO Chain No.	Pitch	Roller diameter	Width between inner plates	Pin diameter	Pin length		Inner plate depth	Plate thickness	Ultimate tensile strength	Average tensile strength	Weight per meter
	P	d1 max	b1 min	d2 max	L max	Lc max	h2 max	t/T max	Q min	Q ₀	q
	mm	mm	mm	mm	mm	mm	mm	mm	kN/LB	kN	kg/m
05B-1	8.000	5.00	3.00	2.31	8.20	8.9	7.10	0.80	5.0/1136	5.9	0.20
*06B-1	9.525	6.35	5.72	3.28	13.15	14.1	8.20	1.30	9.0/2045	10.4	0.41
08B-1	12.700	8.51	7.75	4.45	16.70	18.2	11.80	1.60	18.0/4091	19.4	0.69
10B-1	15.875	10.16	9.65	5.08	19.50	20.9	14.70	1.70	22.4/5091	27.5	0.93
12B-1	19.050	12.07	11.68	5.72	22.50	24.2	16.00	1.85	29.0/6591	32.2	1.15
16B-1	25.400	15.88	17.02	8.28	36.10	37.4	21.00	4.15/3.1	60.0/13636	72.8	2.71
20B-1	31.750	19.05	19.56	10.19	41.30	45.0	26.40	4.5/3.5	95.0/21591	106.7	3.70
24B-1	38.100	25.40	25.40	14.63	53.40	57.8	33.20	6.0/4.8	160.0/36364	178.0	7.10
28B-1	44.450	27.94	30.99	15.90	65.10	69.5	36.70	7.5/6.0	200.0/45455	222.0	8.50
32B-1	50.800	29.21	30.99	17.81	66.00	71.0	42.00	7.0/6.0	250.0/56818	277.5	10.25
40B-1	63.500	39.37	38.10	22.89	82.20	89.2	52.96	8.5/8.0	355.0/80682	394.0	16.35
48B-1	76.200	48.26	45.72	29.24	99.10	107.0	63.80	12.0/10.0	560.0/127272	621.6	25.00



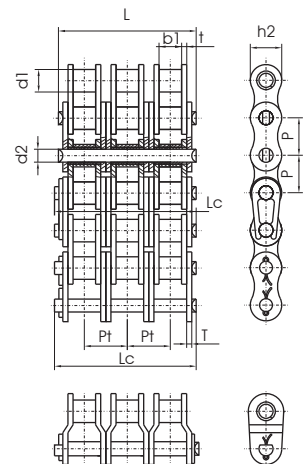
Duplex roller chains

DIN/ISO Chain No.	Pitch	Roller diameter	Width between inner plates	Pin diameter	Pin length		Inner plate depth	Plate thickness	Transverse pitch	Ultimate tensile strength	Average tensile strength	Weight per meter
	P	d1 max	b1 min	d2 max	L max	Lc max	h2 max	t/T max	Pt	Q min	Q ₀	q
	mm	mm	mm	mm	mm	mm	mm	mm	mm	kN/LB	kN	kg/m
05B-2	8.000	5.00	3.00	2.31	13.9	14.5	7.10	0.80	5.64	7.8/1773	10.2	0.33
*06B-2	9.525	6.35	5.72	3.28	23.4	24.4	8.20	1.30	10.24	16.9/3841	18.7	0.77
08B-2	12.700	8.51	7.75	4.45	31.2	32.2	11.80	1.60	13.92	32.0/7273	38.7	1.34
10B-2	15.875	10.16	9.65	5.08	36.1	37.5	14.70	1.70	16.59	44.5/10114	56.2	1.84
12B-2	19.050	12.07	11.68	5.72	42.0	43.6	16.00	1.85	19.46	57.8/13136	66.1	2.31
16B-2	25.400	15.88	17.02	8.28	68.0	69.3	21.00	4.15/3.1	31.88	106.0/24091	133.0	5.42
20B-2	31.750	19.05	19.56	10.19	77.8	81.5	26.40	4.5/3.5	36.45	170.0/38636	211.2	7.20
24B-2	38.100	25.40	25.40	14.63	101.7	106.2	33.20	6.0/4.8	48.36	280.0/63636	319.2	13.40
28B-2	44.450	27.94	30.99	15.90	124.6	129.1	36.70	7.5/6.0	59.56	360.0/81818	406.8	16.60
32B-2	50.800	29.21	30.99	17.81	124.6	129.6	42.00	7.0/6.0	58.55	450.0/102273	508.5	21.00
40B-2	63.500	39.37	38.10	22.89	154.5	161.5	52.96	8.5/8.0	72.29	630.0/143182	711.9	32.00
48B-2	76.200	48.26	45.72	29.24	190.4	198.2	63.80	12.0/10.0	91.21	1000.0/227272	1130.0	50.00



Triplex roller chains

DIN/ISO Chain No.	Pitch	Roller diameter	Width between inner plates	Pin diameter	Pin length		Inner plate depth	Plate thickness	Transverse pitch	Ultimate tensile strength	Average tensile strength	Weight per meter
	P	d1 max	b1 min	d2 max	L max	Lc max	h2 max	t/T max	Pt	Q min	Q ₀	q
	mm	mm	mm	mm	mm	mm	mm	mm	mm	kN/LB	kN	kg/m
05B-3	8.000	5.00	3.00	2.31	19.5	20.2	7.10	0.80	5.64	11.1/2523	13.8	0.48
*06B-3	9.525	6.35	5.72	3.28	33.5	34.6	8.20	1.30	10.24	24.9/5659	30.1	1.16
08B-3	12.700	8.51	7.75	4.45	45.1	46.1	11.80	1.60	13.92	47.5/10795	57.8	2.03
10B-3	15.875	10.16	9.65	5.08	52.7	54.1	14.70	1.70	16.59	66.7/15159	84.5	2.77
12B-3	19.050	12.07	11.68	5.72	61.5	63.1	16.00	1.85	19.46	86.7/19705	101.8	3.46
16B-3	25.400	15.88	17.02	8.28	99.8	101.2	21.00	4.15/3.1	31.88	160.0/36364	203.7	8.13
20B-3	31.750	19.05	19.56	10.19	114.2	117.9	26.40	4.5/3.5	36.45	250.0/56818	290.0	10.82
24B-3	38.100	25.40	25.40	14.63	150.1	154.6	33.20	6.0/4.8	48.36	425.0/96591	493.0	20.10
28B-3	44.450	27.94	30.99	15.90	184.2	188.7	36.70	7.5/6.0	59.56	530.0/120454	609.5	24.92
32B-3	50.800	29.21	30.99	17.81	183.2	188.2	42.00	7.0/6.0	58.55	670.0/152273	770.5	31.56
40B-3	63.500	39.37	38.10	22.89	226.8	233.8	52.96	8.5/8.0	72.29	950.0/215909	1092.5	48.10
48B-3	76.200	48.26	45.72	29.24	281.6	289.4	63.80	12.0/10.0	91.21	1500.0/340909	1710.0	75.00

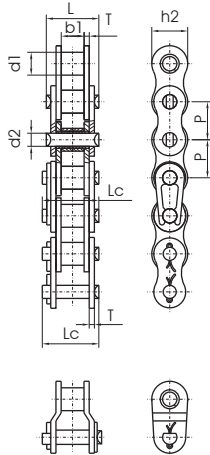


* Straight side plates.

Standard roller chain DIN 8187

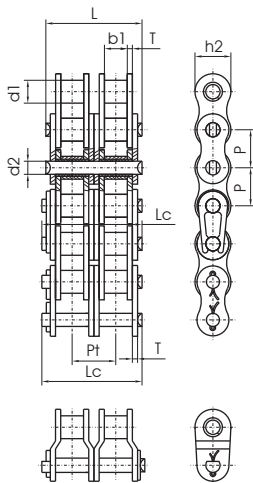
A SERIES

Simplex roller chains & bushing chains



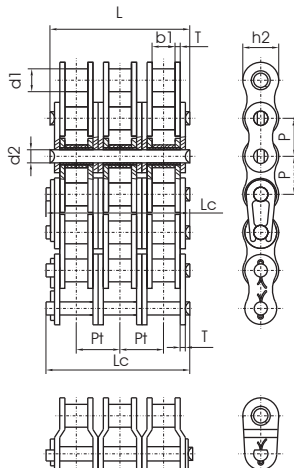
DIN/ISO Chain No.	ANSI Chain No.	Pitch	Roller diameter	Width between inner plates	Pin diameter	Pin length		Inner plate depth	Plate thickness	Ultimate tensile strength	Average tensile strength	Weight per meter
						L	Lc					
						p	d1 max					
*03C	*15	4.7625	2.48	2.38	1.62	6.10	6.90	4.30	0.60	1.80/409	2.0	0.08
*04C-1	*25	6.350	3.30	3.18	2.31	7.90	8.40	6.00	0.80	3.50/795	4.6	0.15
*06C-1	*35	9.525	5.08	4.77	3.58	12.40	13.17	9.00	1.30	7.90/1795	10.8	0.33
085-1	41	12.700	7.77	6.25	3.58	13.75	15.00	9.91	1.30	6.67/1516	12.6	0.41
08A-1	40	12.700	7.95	7.85	3.96	16.60	17.80	12.00	1.50	14.10/3205	17.5	0.62
10A-1	50	15.875	10.16	9.40	5.08	20.70	22.20	15.09	2.03	22.20/5045	29.4	1.02
12A-1	60	19.050	11.91	12.57	5.94	25.90	27.70	18.00	2.42	31.80/7227	41.5	1.50
16A-1	80	25.400	15.88	15.75	7.92	32.70	35.00	24.00	3.25	56.70/12886	69.4	2.60
20A-1	100	31.750	19.05	18.90	9.53	40.40	44.70	30.00	4.00	88.50/20114	109.2	3.91
24A-1	120	38.100	22.23	25.22	11.10	50.30	54.30	35.70	4.80	127.00/28864	156.3	5.62
28A-1	140	44.450	25.40	25.22	12.70	54.40	59.00	41.00	5.60	172.40/39182	212.0	7.50
32A-1	160	50.800	28.58	31.55	14.27	64.80	69.60	47.80	6.40	226.80/51545	278.9	10.10
36A-1	180	57.150	35.71	35.48	17.46	72.80	78.60	53.60	7.20	280.20/63682	341.8	13.45
40A-1	200	63.500	39.68	37.85	19.85	80.30	87.20	60.00	8.00	353.80/80409	431.6	16.15
48A-1	240	76.200	47.63	47.35	23.81	95.50	103.00	72.39	9.50	510.30/115977	622.5	23.20

Duplex roller chains & bushing chains



DIN/ISO Chain No.	ANSI Chain No.	Pitch	Roller diameter	Width between inner plates	Pin diameter	Pin length		Inner plate depth	Plate thickness	Transverse pitch	Ultimate tensile strength	Average tensile strength	Weight per meter
						L	Lc						
						P	d1 max						
*04C-2	*25-2	6.350	3.30	3.18	2.31	14.5	15.0	6.00	0.80	6.40	7.00/1591	8.6	0.28
*06C-2	*35-2	9.525	5.08	4.77	3.58	22.5	23.3	9.00	1.30	10.13	15.80/3591	19.7	0.63
085-2	41-2	12.700	7.77	6.25	3.58	25.7	26.9	9.91	1.30	11.95	13.34/3032	16.9	0.81
08A-2	40-2	12.700	7.95	7.85	3.96	31.0	32.2	12.00	1.50	14.38	28.20/6409	35.9	1.12
10A-2	50-2	15.875	10.16	9.40	5.08	38.9	40.4	15.09	2.03	18.11	44.40/10091	58.1	2.00
12A-2	60-2	19.050	11.91	12.57	5.94	48.8	50.5	18.00	2.42	22.78	63.60/14455	82.1	2.92
16A-2	80-2	25.400	15.88	15.75	7.92	62.7	64.3	24.00	3.25	29.29	113.40/25773	141.8	5.15
20A-2	100-2	31.750	19.05	18.90	9.53	76.4	80.5	30.00	4.00	35.76	177.00/40227	219.4	7.80
24A-2	120-2	38.100	22.23	25.22	11.10	95.8	99.7	35.70	4.80	45.44	254.00/57727	314.9	11.70
28A-2	140-2	44.450	25.40	25.22	12.70	103.3	107.9	41.00	5.60	48.87	344.80/78364	427.5	15.14
32A-2	160-2	50.800	28.58	31.55	14.27	123.3	128.1	47.80	6.40	58.55	453.60/103091	562.4	20.14
36A-2	180-2	57.150	35.71	35.48	17.46	138.6	144.4	53.60	7.20	65.84	560.50/127386	695.0	29.22
40A-2	200-2	63.500	39.68	37.85	19.85	151.9	158.8	60.00	8.00	71.55	707.60/160818	877.4	32.24
48A-2	240-2	76.200	47.63	47.35	23.81	183.4	190.8	72.39	9.50	87.83	1020.60/213955	1255.3	45.23

Triplex roller chains & bushing chains



DIN/ISO Chain No.	ANSI Chain No.	Pitch	Roller diameter	Width between inner plates	Pin diameter	Pin length		Inner plate depth	Plate thickness	Transverse pitch	Ultimate tensile strength	Average tensile strength	Weight per meter
						L	Lc						
						P	d1 max						
*04C-3	*25-3	6.350	3.30	3.18	2.31	21.0	21.5	6.00	0.80	6.40	10.5/2386	12.6	0.44
*06C-3	*35-3	9.525	5.08	4.77	3.58	32.7	33.5	9.00	1.30	10.13	23.7/5386	28.6	1.05
08A-3	40-3	12.700	7.95	7.85	3.96	45.4	46.6	12.00	1.50	14.38	42.3/9614	50.0	1.90
10A-3	50-3	15.875	10.16	9.40	5.08	57.0	58.5	15.09	2.03	18.11	66.6/15136	77.8	3.09
12A-3	60-3	19.050	11.91	12.57	5.94	71.5	73.3	18.00	2.42	22.78	95.4/21682	111.1	4.54
16A-3	80-3	25.400	15.88	15.75	7.92	91.7	93.6	24.00	3.25	29.29	170.1/38659	198.4	7.89
20A-3	100-3	31.750	19.05	18.90	9.53	112.2	116.3	30.00	4.00	35.76	265.5/60341	309.6	11.77
24A-3	120-3	38.100	22.23	25.22	11.10	141.4	145.2	35.70	4.80	45.44	381.0/86591	437.2	17.53
28A-3	140-3	44.450	25.40	25.22	12.70	152.2	156.8	41.00	5.60	48.87	517.2/117545	593.3	22.20
32A-3	160-3	50.800	28.58	31.55	14.27	181.8	186.6	47.80	6.40	58.55	680.4/154636	780.6	30.02
36A-3	180-3	57.150	35.71	35.48	17.46	204.4	210.2	53.60	7.20	65.84	840.7/191068	983.6	38.22
40A-3	200-3	63.500	39.68	37.85	19.85	223.5	230.4	60.00	8.00	71.55	1061.4/241227	1217.8	49.03
48A-3	240-3	76.200	47.63	47.35	23.81	271.3	278.6	72.39	9.50	87.83	1530.9/347932	1756.5	71.60

* Bushing chain: d1 in the table indicate the external diameter of the bushing.

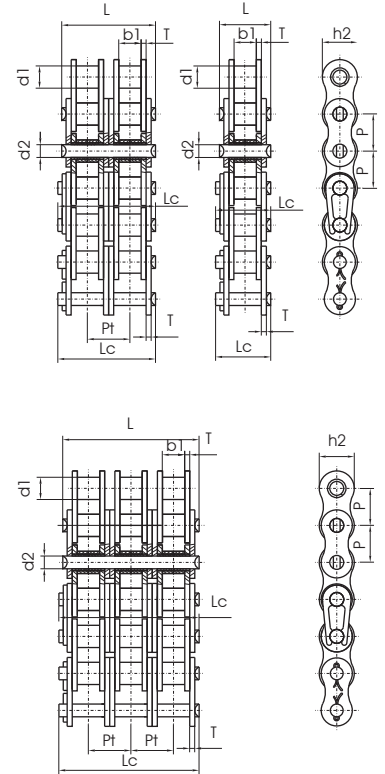
Standard roller chain DIN 8187

A SERIES

Heavy duty series roller chains

DIN/ISO Chain No.	ANSI Chain No.	Pitch	Roller diameter		Width between inner plates		Pin diameter		Pin length		Inner plate depth	Plate thickness	Transverse pitch	Ultimate tensile strength	Average tensile strength	Weight per meter
			P	d1 max	b1 min	d2 max	L max	Lc max	h2 max	T max						
		mm	mm	mm	mm	mm	mm	mm	mm	mm	mm	mm	mm	kN/LBk	N	kg/m
	*35H	9.525	5.08	4.77	3.58	13.3	14.3	9.0	1.5					7.9/1795	10.8	0.41
08AH-1	40H	12.700	7.95	7.85	3.96	18.8	19.9	12.00	2.03					14.1/3205	19.1	0.82
10AH-1	50H	15.875	10.16	9.40	5.08	22.1	23.4	15.09	2.42					22.2/5045	30.2	1.25
12AH-1	60H	19.050	11.91	12.57	5.94	29.2	31.0	18.00	3.25					31.8/7227	42.7	1.87
16AH-1	80H	25.400	15.88	15.75	7.92	36.2	37.7	24.00	4.00					56.7/12886	71.4	3.10
20AH-1	100H	31.750	19.05	18.90	9.53	43.6	46.9	30.00	4.80					88.5/20114	112.4	4.52
24AH-1	120H	38.100	22.23	25.22	11.10	53.5	57.5	35.70	5.60					127.0/28864	160.9	6.60
28AH-1	140H	44.450	25.40	25.22	12.70	57.6	62.2	41.00	6.40					172.4/39182	217.3	8.30
32AH-1	160H	50.800	28.58	31.55	14.27	68.2	73.0	47.80	7.20					226.8/51545	285.8	10.30
40AH-1	200H	63.500	39.68	37.85	19.85	86.6	93.5	60.00	9.50					353.8/80409	444.5	19.16
12AH-2	60H-2	19.050	11.91	12.57	5.94	55.3	57.1	18.00	3.25	26.11				63.6/14455	84.5	3.71
16AH-2	80H-2	25.400	15.88	15.75	7.92	68.8	70.3	24.00	4.00	32.59				113.4/25773	145.3	6.15
20AH-2	100H-2	31.750	19.05	18.90	9.53	82.7	86.0	30.00	4.80	39.09				177.0/40227	225.9	9.03
24AH-2	120H-2	38.100	22.23	25.22	11.10	102.4	106.4	35.70	5.60	48.87				254.0/57727	322.7	13.13
28AH-2	140H-2	44.450	25.40	25.22	12.70	109.8	114.4	41.00	6.40	52.20				344.8/78364	437.7	16.60
32AH-2	160H-2	50.800	28.58	31.55	14.27	130.1	134.9	47.80	7.20	61.90				453.6/103091	571.6	20.20
40AH-2	200H-2	63.500	39.68	37.85	19.85	164.9	171.8	60.00	9.50	78.31				707.6/160818	894.9	38.11
12AH-3	60H-3	19.050	11.91	12.57	5.94	81.4	83.2	18.00	3.25	26.11				95.4/21682	113.9	5.54
16AH-3	80H-3	25.400	15.88	15.75	7.92	101.4	102.9	24.00	4.00	32.59				170.1/38659	203.5	9.42
20AH-3	100H-3	31.750	19.05	18.90	9.53	121.8	125.1	30.00	4.80	39.09				265.5/60341	314.8	12.96
24AH-3	120H-3	38.100	22.23	25.22	11.10	151.2	155.2	35.70	5.60	48.87				381.0/86591	444.7	19.64
28AH-3	140H-3	44.450	25.40	25.22	12.70	162.0	166.6	41.00	6.40	52.20				517.2/117545	598.4	24.90
32AH-3	160H-3	50.800	28.58	31.55	14.27	192.0	196.8	47.80	7.20	61.90				680.4/154636	787.3	30.10
40AH-3	200H-3	63.500	39.68	37.85	19.85	243.2	250.1	60.00	9.50	78.31				1061.4/241227	1228.2	57.06

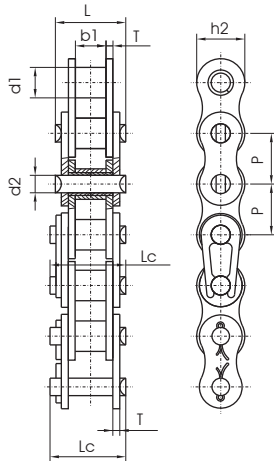
* Bushing chain: d1 in the table indicate the external diameter of the bushing.



Standard roller chain with anti corrosion systems DIN 8188

Nickel plated chains

Chains with electrolytic nickel anti-corrosion treatment, better known as NICKELED CHAINS, have low resistance to corrosion but are very successful on the market due to the fact that they look good. Their smooth, shiny finish gives them a visual appearance similar to that of stainless steel chains. Their good corrosion-resistance performance is limited to petrol, oleic acid, alcohol, ethyl glycol, sugar and urea. The resistance of this material to orange juice is average. It does not resist contact with acetic, citric, lactic or phosphoric acid, ammonium chloride, potassium chloride, beer, lemon juice or vinegar. The corrosion resistance of this substance in the salt spray test (C.N.S.) is from 70-100 hours.

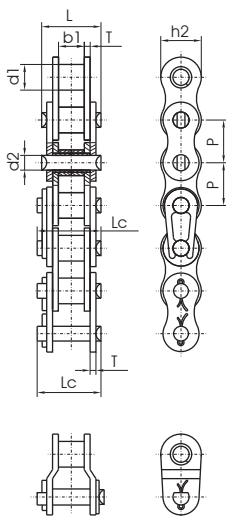


Chain No.	Pitch	diameter	between inner plates	diameter	length		plate depth	thickness	Breaking Load	per meter
	P	d1 max	b1 min	d2 max	L max	Lc max	h2 max	t/T max		q
	mm	mm	mm	mm	mm	mm	mm	mm	kN/LB	kg/m
*35NP	9.525	5.08	4.77	3.58	12.40	13.17	9.00	1.30	7.90/1795	0.33
40NP	12.700	7.95	7.85	3.96	16.60	17.80	12.00	1.50	14.10/3205	0.62
50NP	15.875	10.16	9.40	5.08	20.70	22.20	15.09	2.03	22.20/5045	1.02
60NP	19.050	11.91	12.57	5.94	25.90	27.70	18.00	2.42	31.80/7227	1.50
80NP	25.400	15.88	15.75	7.92	32.70	35.00	24.00	3.25	56.70/12886	2.60
100NP	31.750	19.05	18.90	9.53	40.40	44.70	30.00	4.00	88.50/20114	3.91
05BNP	8.000	5.00	3.00	2.31	8.20	8.90	7.10	0.80	5.00/1136	0.20
#06BNP	9.525	6.35	5.72	3.28	13.15	14.10	8.20	1.30	9.00/2045	0.41
08BNP	12.700	8.51	7.75	4.45	16.70	18.20	11.80	1.60	18.00/4091	0.69
10BNP	15.875	10.16	9.65	5.08	19.50	20.90	14.70	1.70	22.40/5091	0.93
12BNP	19.050	12.07	11.68	5.72	22.50	24.20	16.00	1.85	29.00/6591	1.15
16BNP	25.400	15.88	17.02	8.28	36.10	37.40	21.00	4.15/3.1	60.00/13636	2.71
20BNP	31.750	19.05	19.56	10.19	41.30	45.00	26.40	4.5/3.5	95.00/21591	3.70

* Bushing chain: d1 in the table indicate the external diameter of the bushing.
Straight side plates.
Note: Double strand & triple strand nickel plated chains are available upon request.

Delta-tone plated chains

Delta-tone is a non-electrolytic coating made of zinc and aluminium sheets that are fixed on the steel surface by means of a chemical reaction. Due to the metal pigments and the bonding system and following the drying process in a furnace, an indiffusible film is obtained, with a cathodic protection effect. It is a non-hydrogenating coating (no electrolysis or acid pickling) with electrical conductivity and high temperature resistance. It is free of Chrome VI and Chrome III, it has low friction values and high anti-corrosion protection (Cathodic protection). Its outward appearance is Silver grey. The corrosion resistance of this substance in the salt spray test (C.N.S.) is from 500-1.000 hours



Chain No.	Pitch	diameter	between inner plates	diameter	length		plate depth	thickness	Breaking Load	per meter
	P	d1 max	b1 min	d2 max	L max	Lc max	h2 max	t/T max		q
	mm	mm	mm	mm	mm	mm	mm	mm	kN/LB	kg/m
*35NP	9.525	5.08	4.77	3.58	12.40	13.17	9.00	1.30	7.90/1795	0.33
40NP	12.700	7.95	7.85	3.96	16.60	17.80	12.00	1.50	14.10/3205	0.62
50NP	15.875	10.16	9.40	5.08	20.70	22.20	15.09	2.03	22.20/5045	1.02
60NP	19.050	11.91	12.57	5.94	25.90	27.70	18.00	2.42	31.80/7227	1.50
80NP	25.400	15.88	15.75	7.92	32.70	35.00	24.00	3.25	56.70/12886	2.60
100NP	31.750	19.05	18.90	9.53	40.40	44.70	30.00	4.00	88.50/20114	3.91
05BNP	8.000	5.00	3.00	2.31	8.20	8.90	7.10	0.80	5.00/1136	0.20
#06BNP	9.525	6.35	5.72	3.28	13.15	14.10	8.20	1.30	9.00/2045	0.41
08BNP	12.700	8.51	7.75	4.45	16.70	18.20	11.80	1.60	18.00/4091	0.69
10BNP	15.875	10.16	9.65	5.08	19.50	20.90	14.70	1.70	22.40/5091	0.93
12BNP	19.050	12.07	11.68	5.72	22.50	24.20	16.00	1.85	29.00/6591	1.15
16BNP	25.400	15.88	17.02	8.28	36.10	37.40	21.00	4.15/3.1	60.00/13636	2.71
20BNP	31.750	19.05	19.56	10.19	41.30	45.00	26.40	4.5/3.5	95.00/21591	3.70

* Bushing chain: d1 in the table indicate the external diameter of the bushing.
Straight side plates.
Note: Double strand & triple strand nickel plated chains are available upon request.

Standard roller chain with anti corrosion systems DIN 8188

Delta-seal plated chains

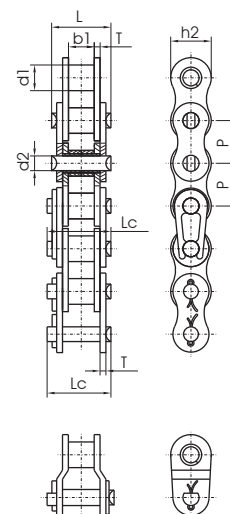
Delta-Seal is an organic coating capable of lending metal pieces greater corrosion resistance.

This coating is a top coat on an organic base; it is non-hydrogenating and serves basically to seal the delta-Tone surface, to increase anti-corrosion protection in the salt spray test and solidify the surface.

Its outward appearance is Silver grey.

To optimise the results of this chains coated with this substance, the chain bolt of chains treated with Delta-Seal is chromized. The corrosion resistance of this substance in the salt spray test (C.N.S.) is from 500-1.000 hours.

Chain No.	pitch	Roller diameter	Width between inner plates	pin diameter	Pin length		Inner plate depth	Plate thickness	Breaking Load	weight per meter
					L max	Lc max				
					P	d1 max				
mm	mm	mm	mm	mm	mm	mm	mm	mm	kN/LB	kg/m
#06BDS	9.525	6.35	5.72	3.28	13.15	14.10	8.20	1.30	9.00/2045	0.41
08BDS	12.700	8.51	7.75	4.45	16.70	18.20	11.80	1.60	18.00/4091	0.69
10BDS	15.875	10.16	9.65	5.08	19.50	20.90	14.70	1.70	22.40/5091	0.93
12BDS	19.050	12.07	11.68	5.72	22.50	24.20	16.00	1.85	29.00/6591	1.15
16BDS	25.400	15.88	17.02	8.28	36.10	37.40	21.00	4.15/3.1	60.00/13636	2.71

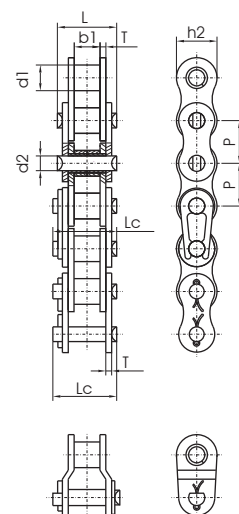


* Bushing chain: d1 in the table indicate the external diameter of the bushing.
 # Straight side plates.
 Note: Double strand & triple strand nickle plated chains are available upon request.

Stainless steel chains

These are chains are made of 304 stainless steel. They offer greater corrosion resistance than Nickel-plated or Delta tone Chains, and can be used in water and in corrosive atmospheres that are acidic or alkaline, as well as in low or high temperatures (-20°C to 400°C). 304 stainless steel is only marginally magnetic. Some magnetism exists only due to the cold-forging process. For higher corrosion resistance 316 stainless steel are available upon request. Precipitation hardened stainless Steel is also available for higher strength and hardness level after undergoing a heat-treatment process.

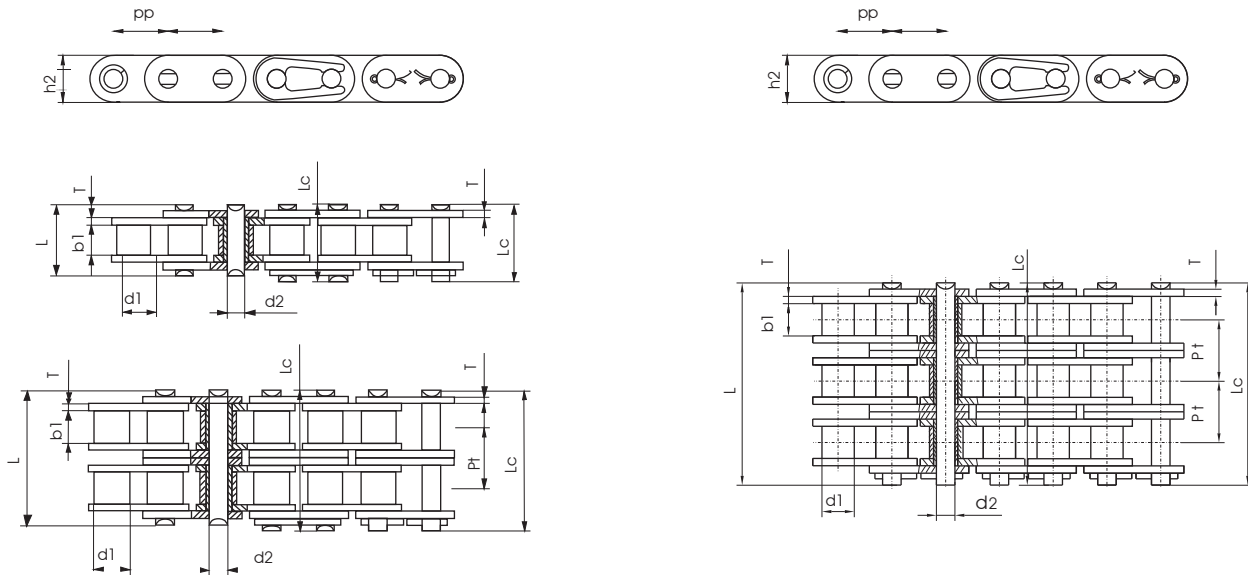
Chain No.	pitch	Roller diameter	Width between inner plates	pin diameter	Pin length		Inner plate depth	Plate thickness	Breaking Load	weight per meter
					L max	Lc max				
					P	d1 max				
mm	mm	mm	mm	mm	mm	mm	mm	mm	kN/LB	kg/m
*25SS	6.350	3.30	3.18	2.31	7.90	8.40	6.00	0.80	2.5/568	0.15
*35SS	9.525	5.08	4.77	3.58	12.40	13.17	9.00	1.30	5.5/1250	0.33
41SS	12.700	7.77	6.25	3.58	13.75	15.00	9.91	1.30	6.0/1360	0.46
40SS	12.700	7.95	7.85	3.96	16.60	17.80	12.00	1.50	9.6/2182	0.63
50SS	15.875	10.16	9.40	5.08	20.70	22.20	15.09	2.03	15.2/3455	1.03
60SS	19.050	11.91	12.57	5.94	25.90	27.70	18.00	2.42	21.7/4932	1.51
80SS	25.400	15.88	15.75	7.92	32.70	35.00	24.00	3.25	38.9/8841	2.62
100SS	31.750	19.05	18.90	9.53	40.40	44.70	30.00	4.00	60.0/13636	3.94
120SS	38.100	22.23	25.22	11.10	50.30	54.30	35.70	4.80	72.5/16477	5.72
140SS	44.450	25.40	25.22	12.70	54.40	59.00	41.00	5.60	94.0/21363	7.70
04BSS	6.000	4.00	2.80	1.85	6.80	7.80	5.00	0.60	2.0/455	0.11
05BSS	8.000	5.00	3.00	2.31	8.20	8.90	7.10	0.80	3.5/795	0.20
#06BSS	9.525	6.35	5.72	3.28	13.15	14.10	8.20	1.30	6.2/1409	0.41
08BSS	12.700	8.51	7.75	4.45	16.70	18.20	11.80	1.60	12.0/2727	0.70
10BSS	15.875	10.16	9.65	5.08	19.50	20.90	14.70	1.70	14.5/3295	0.94
12BSS	19.050	12.07	11.68	5.72	22.50	24.20	16.00	1.85	18.5/4205	1.16
16BSS	25.400	15.88	17.02	8.28	36.10	37.40	21.00	4.15/3.1	40.0/9091	2.73
20BSS	31.750	19.05	19.56	10.19	41.30	45.00	26.40	4.5/3.5	59.0/13409	3.73
24BSS	38.100	25.40	25.40	14.63	53.40	57.80	33.20	6.0/4.8	104.0/25454	7.20
32BSS	50.800	29.21	30.99	17.81	66.00	71.00	42.00	7.0/6.0	150.0/34090	10.22



* Bushing chain: d1 in the table indicate the external diameter of the bushing.
 # Straight side plates.
 Note: Double strand & triple strand nickle plated chains are available upon request.

Roller chains with straight plates

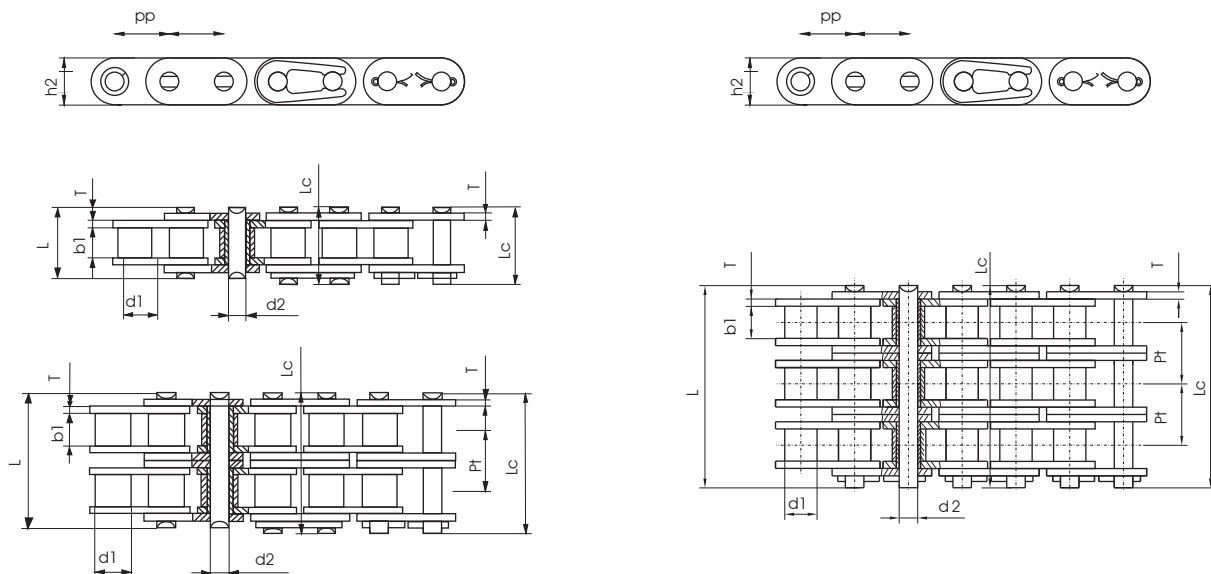
B SERIES



DIN/ISO Chain No.	Pitch	Roller diameter	Width between inner plates	Pin diameter	Pin length		Inner plate depth	Plate thick- ness	Transverse pitch	Ultimate tensile strength	Average tensile strength	Weight per meter
	P	d1 max	b1 min	d2 max	L max	Lc max	h2 max	t/T max	Pt	Q min	Q0	q
	mm	mm	mm	mm	mm	mm	mm	mm	mm	KN/LB	kN	kg/m
C08B-1	12.700	8.51	7.75	4.45	16.7	18.2	11.8	1.60		18.0/4091	19.5	0.80
C10B-1	15.875	10.16	9.65	5.08	19.5	20.9	14.7	1.70		22.4/5091	27.9	1.06
C12B-1	19.050	12.07	11.68	5.72	22.5	25.2	16.0	1.85		29.0/6591	32.2	1.32
C16B-1	25.400	15.88	17.02	8.28	36.1	39.1	21.0/24.0	4.15/3.1		60.0/13636	72.8	3.08/3.49
C20B-1	31.750	19.05	19.56	10.19	41.3	45.0	26.4	4.5/3.5		95.0/21591	106.7	4.16
C24B-1	38.100	25.40	25.40	14.63	53.4	57.8	33.2	6.0/4.8		160.0/36364	178.0	7.47
C28B-1	44.450	27.94	30.99	15.90	65.1	69.5	36.7	7.5/6.0		200.0/45455	222.0	9.90
C32B-1	50.800	29.21	30.99	17.81	66.0	71.0	42.0	7.0/6.0		250.0/56818	277.5	10.45
C08B-2	12.700	8.51	7.75	4.45	31.2	32.2	11.8	1.60	13.92	32.0/7273	38.7	1.45
C10B-2	15.875	10.16	9.65	5.08	36.1	37.5	14.7	1.70	16.59	44.5/10114	57.8	2.00
C12B-2	19.050	12.07	11.68	5.72	42.0	44.7	16.0	1.85	19.46	57.8/13136	66.1	2.62
C16B-2	25.400	15.88	17.02	8.28	68.0	71.0	21.0/24.0	4.15/3.1	31.88	106.0/24091	133.0	6.10/6.92
C20B-2	31.750	19.05	19.56	10.19	77.8	81.5	26.4	4.5/3.5	36.45	170.0/38636	211.2	8.23
C24B-2	38.100	25.40	25.40	14.63	101.7	106.2	33.2	6.0/4.8	48.36	280.0/63636	319.2	14.77
C28B-2	44.450	27.94	30.99	15.90	124.6	129.1	36.7	7.5/6.0	59.56	360.0/81818	406.8	19.82
C32B-2	50.800	29.21	30.99	17.81	124.6	129.6	42.0	7.0/6.0	58.55	450.0/102273	508.5	20.94
C08B-3	12.700	8.51	7.75	4.45	45.1	46.1	11.8	1.60	13.92	47.5/10795	57.8	2.10
C10B-3	15.875	10.16	9.65	5.08	52.7	54.1	14.7	1.70	16.59	66.7/15159	84.5	2.87
C12B-3	19.050	12.07	11.68	5.72	61.5	64.2	16.0	1.85	19.46	86.7/19705	101.8	3.89
C16B-3	25.400	15.88	17.02	8.28	99.8	102.9	21.0/24.0	4.15/3.1	31.88	160.0/36364	203.7	9.12/10.34
C20B-3	31.750	19.05	19.56	10.19	114.2	117.9	26.4	4.5/3.5	36.45	250.0/56818	290.0	11.34
C24B-3	38.100	25.40	25.40	14.63	150.1	154.6	33.2	6.0/4.8	48.36	425.0/96591	493.0	22.10
C28B-3	44.450	27.94	30.99	15.90	184.2	188.7	36.7	7.5/6.0	59.56	530.0/120454	609.5	29.64
C32B-3	50.800	29.21	30.99	17.81	183.2	188.2	42.0	7.0/6.0	58.55	670.0/152273	770.5	31.27

Roller chains with straight plates

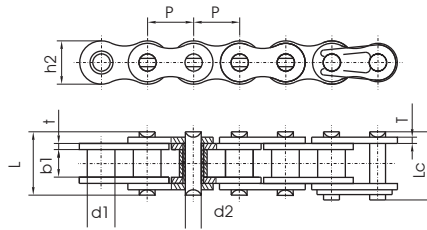
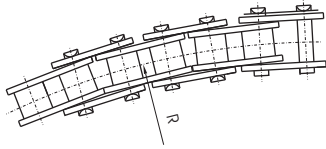
A SERIES



DIN/ISO Chain No.	ANSI Chain No.	Pitch	Roller diameter	Width between inner plates	Pin diameter	Pin length		Inner plate depth	Plate thickness	Transverse pitch	Ultimate tensile strength	Average tensile strength	Weight per meter
		P	d1 max	b1 min	d2 max	L max	Lc max	h2 max	T max	Pt	Q min	Q0	q
		mm	mm	mm	mm	mm	mm	mm	mm	mm	KN/LB	kN	kg/m
	*C35	9.525	5.08	4.77	3.58	13.3	14.3	9.00	1.30		7.9/1795	10.8	0.41
C08A-1	C40	12.700	7.95	7.85	3.96	16.6	18.8	12.00	1.50		14.1/3273	17.5	0.73
C10A-1	C50	15.875	10.16	9.40	5.08	20.7	23.3	15.09	2.03		22.2/5045	29.4	1.23
C12A-1	C60	19.050	11.91	12.57	5.94	25.9	28.3	18.0/18.2	2.42		31.8/7227	41.5	1.81/1.83
C16A-1	C80	25.400	15.88	15.75	7.92	32.7	36.5	24.00	3.25		56.7/12886	69.4	3.09
C20A-1	C100	31.750	19.05	18.90	9.53	40.4	44.7	30.00	4.00		88.5/20114	109.2	4.56
C24A-1	C120	38.100	22.23	25.22	11.10	50.3	54.3	35.70	4.80		127.0/28864	156.3	6.86
C28A-1	C140	44.450	25.40	25.22	12.70	54.4	59.0	41.00	5.60		172.4/39182	212.0	8.49
C32A-1	C160	50.800	28.58	31.55	14.27	64.8	69.6	47.80	6.40		226.8/51545	278.9	11.50
C08A-2	C40-2	12.700	7.95	7.85	3.96	31.0	33.2	12.00	1.50	14.38	28.2/6409	35.9	1.43
C10A-2	C50-2	15.875	10.16	9.40	5.08	38.9	41.4	15.09	2.03	18.11	44.4/10091	58.1	2.42
C12A-2	C60-2	19.050	11.91	12.57	5.94	48.8	51.1	18.0/18.2	2.42	22.78	63.6/14455	82.1	3.58/3.62
C16A-2	C80-2	25.400	15.88	15.75	7.92	62.7	65.8	24.00	3.25	29.29	113.4/25773	141.8	6.12
C20A-2	C100-2	31.750	19.05	18.90	9.53	76.4	80.5	30.00	4.00	35.76	177.0/40227	219.4	9.08
C24A-2	C120-2	38.100	22.23	25.22	11.10	95.8	99.7	35.70	4.80	45.44	254.0/57727	314.9	13.60
C28A-2	C140-2	44.450	25.40	25.22	12.70	103.3	107.9	41.00	5.60	48.87	344.8/78364	427.5	16.86
C32A-2	C160-2	50.800	28.58	31.55	14.27	123.3	128.1	47.80	6.40	58.55	453.6/103091	562.4	22.90
C08A-3	C40-3	12.700	7.95	7.85	3.96	45.4	47.6	12.00	1.50	14.38	42.3/9614	50.0	2.14
C10A-3	C50-3	15.875	10.16	9.40	5.08	57.0	59.5	15.09	2.03	18.11	66.6/15136	77.8	3.62
C12A-3	C60-3	19.050	11.91	12.57	5.94	71.5	73.9	18.0/18.2	2.42	22.78	95.4/21682	111.1	5.36/5.41
C16A-3	C80-3	25.400	15.88	15.75	7.92	91.7	95.1	24.00	3.25	29.29	170.1/38659	198.4	9.10
C20A-3	C100-3	31.750	19.05	18.90	9.53	112.2	116.3	30.00	4.00	35.76	265.5/60341	309.6	13.60
C24A-3	C120-3	38.100	22.23	25.22	11.10	141.4	145.2	35.70	4.80	45.44	381.0/86591	437.2	20.43
C28A-3	C140-3	44.450	25.40	25.22	12.70	152.2	156.8	41.00	5.60	48.87	517.2/117545	593.3	25.23
C32A-3	C160-3	50.800	28.58	31.55	14.27	181.8	186.6	47.80	6.40	58.55	680.4/154636	780.6	34.19

* Bushing chain: d1 in the table indicate the external diameter of the bushing.

Side bow chains

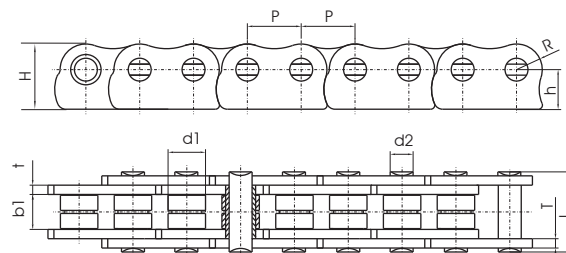
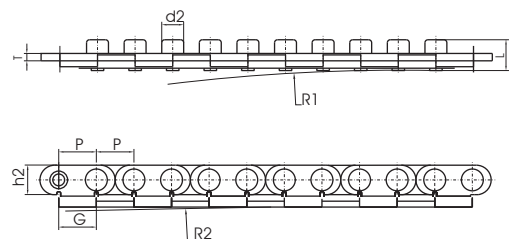


Side bow chains

Chain No.	Pitch	Roller diameter	Width between inner plates	Pin diameter	Pin length		Inner plate depth	Plate Thickness	Side bow radius	Ultimate tensile strength	Average tensile strength	Weight per meter
	P	d1 max	b1 min	d2 max	L max	Lc max	h2 max	t/T max	R min	Q min	Qo	q
	mm	mm	mm	mm	mm	mm	mm	mm	mm	kN/LB	kN	kg/m
40SB	12.70	7.95	7.85	3.96	16.9	18.1	11.7	1.5	350	13.8/3136	15.2	0.80
50SB	15.875	10.16	9.40	4.37	20.7	22.7	14.9	2.03	400	20.6/4681	22.7	1.09
60SB	19.05	11.91	12.57	5.34	26.6	28.4	18.0	2.42	500	15.7/3568	17.3	1.54
80SB	25.40	15.88	15.75	7.19	34.0	37.3	24.0	3.25	711	40.9/9201	42.0	2.60
08BSB	12.70	8.51	7.75	3.97	17.4	18.7	11.8	1.6	400	14.0/3182	15.4	0.70
10BSB	15.875	10.16	9.65	4.50	20.1	21.5	14.7	1.7	400	15.6/3545	17.2	0.93
12BSB	19.05	12.07	11.68	5.12	23.1	24.8	16.0	1.85	500	20.5/4658	22.6	1.16
16BSB	25.40	15.88	17.22	7.90	36.5	39.7	21.0	3.7/3.0	500	55.6/12635	64.0	2.53
C20S0SB	31.75	10.16	9.40	5.08	21.3	22.6	15.0	2.03	800	21.8/4954	24.1	0.84

Side bow chains for pushing window

Chain no	Pitch	Pin diameter	Pin length	Plate dimension			Sidebow radius		Weight per meter
	P	D2 max	L	h2 max	G max	T max	R1	R2	q
	mm	mm	mm	mm	mm	mm	mm	mm	kg/m
P12.75SB	12.75	7.4	10.65	14.25	12.8	2.5	500-800	1000	0.69



Anti-sidebow chains for pushing window

Chain no	Pitch	Roller diameter	Width between inner plates	Pin diameter	Pin length		Plate dimension			ultimate tensile strength	Weight per meter
	P	d1 max	b1 Min	d2 max	L max	Lc max	H max	h	t / T max	Q Min	q
	mm	mm	mm	mm	mm	mm	mm	mm	mm	KN	Kg/m
08AF6	12.7	7.95	7.85	3.96	16.6	17.8	17.0	11.0	1.5	13.8	0.91
415BF4	12.7	7.75	4.88	4.09	16.4	17.8	17.0	11.0	1.3/3.1	12.0	1.07
08BSSF20	12.7	8.51	7.75	4.45	16.7	18.2	16.5	10.5	1.6	12.0	1.06

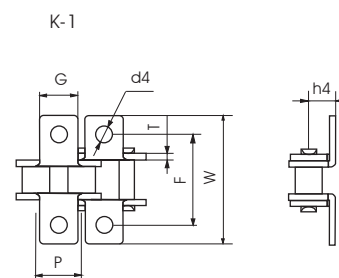
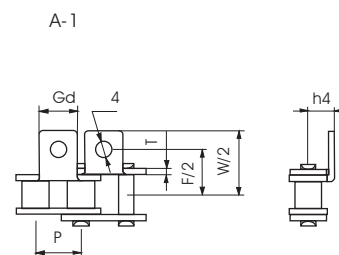
Short pitch conveyor chain with attachments

STANDARD B+A SERIES

A1 / K1 Attachments

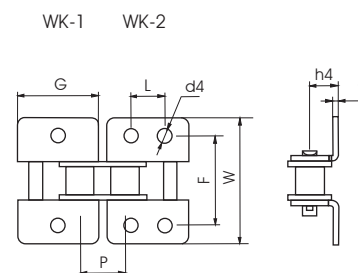
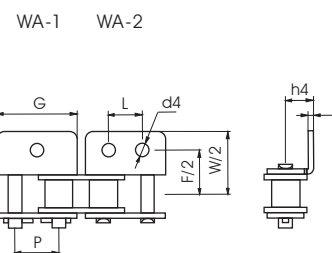
DIN/ISO Chain No.	ANSI Chain No.	P	G	F	W	T	h4	d4
		mm	mm	mm	mm	mm	mm	mm
06C	35	9.525	7.9	19.00	28.60	1.30	6.35	3.4
08A	40	12.700	9.5	25.40	35.20	1.50	7.90	3.4
085	41	12.700	9.5	24.00	33.4	1.30	6.90	3.6
10A	50	15.875	12.7	31.75	46.2	2.03	10.30	5.5
12A	60	19.050	15.9	38.10	55.6	2.42	11.90	5.5
16A	80	25.400	19.1	50.80	64.8	3.25	15.90	6.8
20A	100	31.750	25.4	63.50	87.3	4.00	19.80	9.2
24A	120	38.100	28.6	76.20	108.5	4.80	23.00	9.8
28A	140	44.450	34.9	88.90	123.0	5.60	28.60	11.4
32A	160	50.800	38.1	101.60	142.8	6.40	31.75	13.1
40A	200	63.500	50.8	127.00	179.0	8.00	42.88	16.3
*06B		9.525	8.0	19.00	27.0	1.30	6.50	3.5
08B		12.700	11.0	27.60	39.0	1.60	8.75	4.3
10B		15.875	14.0	31.60	46.4	1.70	10.50	5.3
12B		19.050	18.0	35.50	56.2	1.85	11.60	6.4
16B		25.400	24.0	53.80	74.8	3.10	16.30	8.2
20B		31.750	35.0	63.50	91.4	3.50	19.80	9.0
24B		38.100	30.0	76.20	108.4	4.80	26.67	10.5
28B		44.450	35.0	88.90	123.0	6.00	28.58	13.1
32B		50.800	38.1	101.60	142.8	6.00	31.75	13.1

* Straight side plates.



WA-1 / WA-2 & WK-1 / WK-2 Attachments

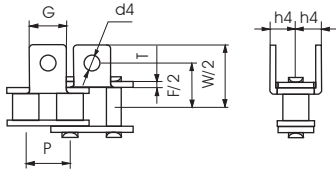
DIN/ISO Chain No.	ANSI Chain No.	P	G	L	F	W	T	h4	d4
		mm	mm	mm	mm	mm	mm	mm	mm
06C	35	9.525	17.32	9.525	19.00	28.6	1.30	6.35	2.8
08A	40	12.700	23.00	12.700	25.40	35.6	1.50	7.90	3.4
085	41	12.700	22.30	12.700	24.00	35.0	1.30	7.20	4.85
10A	50	15.875	28.80	15.875	31.75	46.8	2.03	10.30	5.5
12A	60	19.050	34.65	19.050	38.10	56.4	2.42	11.90	5.5
16A	80	25.400	45.90	25.400	50.80	73.2	3.25	15.90	6.8
20A	100	31.750	57.65	31.750	63.50	89.8	4.00	19.80	9.2
24A	120	38.100	69.30	38.100	76.20	108.8	4.80	23.00	9.8
28A	140	44.450	80.45	44.450	88.90	123.0	5.60	28.60	11.4
32A	160	50.800	92.00	50.800	101.60	142.8	6.40	31.75	13.1
40A	200	63.500	115.5	63.500	127.00	179.0	8.00	42.88	16.3
06B		9.525	17.75	9.520	19.00	27.0	1.60	6.50	3.5
08B		12.700	24.20	12.700	27.60	39.0	1.60	8.75	4.3
10B		15.875	29.90	15.880	31.60	46.4	1.70	10.50	5.3
12B		19.050	35.25	19.050	35.50	56.2	1.85	11.60	6.4
16B		25.400	46.00	25.400	53.80	74.8	3.10	16.30	8.2
20B		31.750	58.10	31.750	63.50	91.4	3.50	19.80	9.0
24B		38.100	71.30	38.100	76.20	108.4	4.80	26.67	10.5
28B		44.450	81.10	44.450	88.90	123.0	6.00	28.58	13.1
32B		50.800	92.80	50.800	101.60	142.8	6.00	31.75	13.1



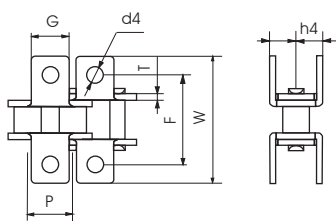
Short pitch conveyor chain with attachments

STANDARD B+A SERIES

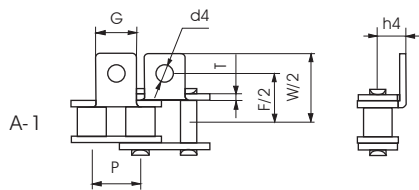
AA-1



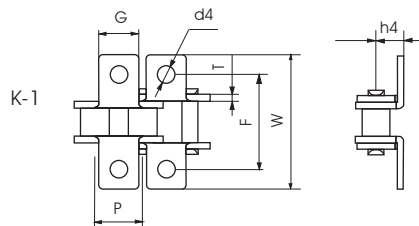
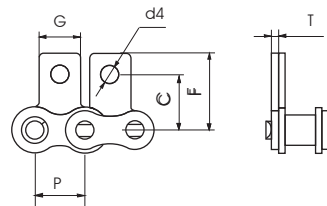
KK-1



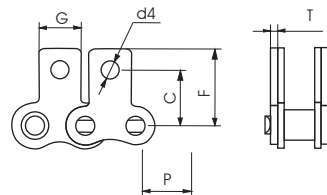
DIN/ISO Chain No.	ANSI Chain No.	P	G	F	W	T	h4	d4
		mm	mm	mm	mm	mm	mm	mm
08A	40	12.700	9.5	25.40	35.2	1.50	7.90	3.4
10A	50	15.875	12.7	31.75	46.2	2.03	10.30	5.5
12A	60	19.050	15.9	38.10	55.6	2.42	11.90	5.5
16A	80	25.400	19.1	50.80	64.8	3.25	15.90	6.8
20A	100	31.750	25.4	63.50	87.3	4.00	19.80	9.2
*06B		9.525	8.0	19.00	27.0	1.30	6.50	3.5
08B		12.700	11.0	27.60	39.0	1.60	8.75	4.3
10B		15.875	14.0	31.60	46.4	1.70	10.50	5.3
12B		19.050	18.0	35.50	56.2	1.85	11.60	6.4
16B		25.400	24.0	53.80	74.8	3.10	16.30	8.2
20B		31.750	35.0	63.50	91.4	3.50	19.80	9.0



SA-1



SK-1

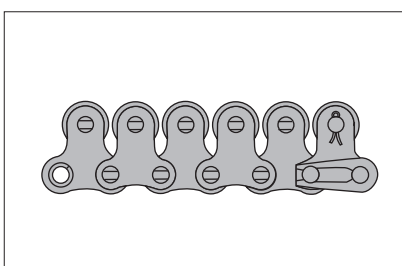
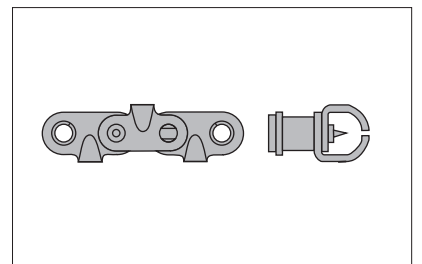
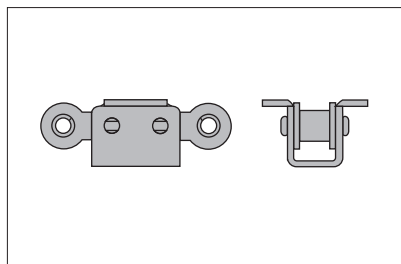
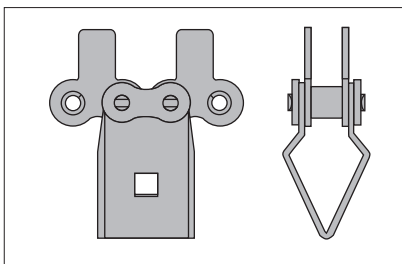
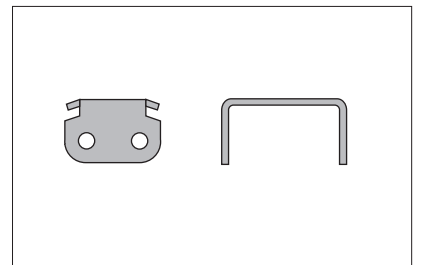
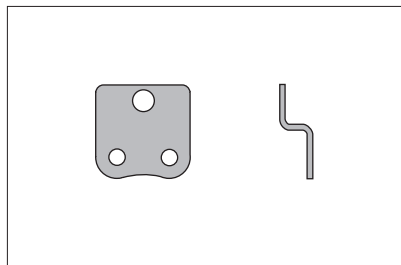
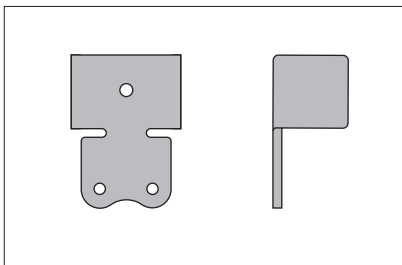
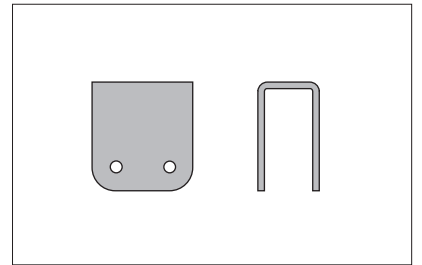
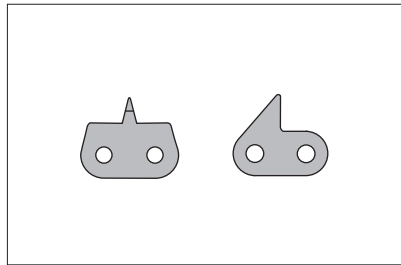
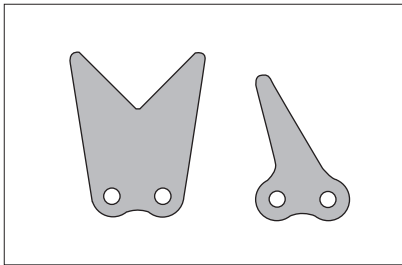
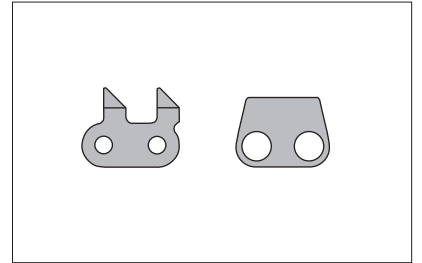
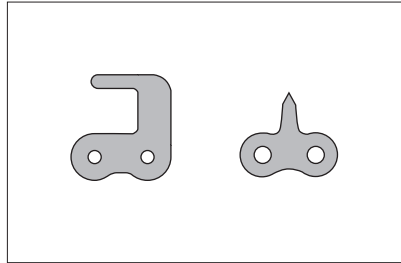
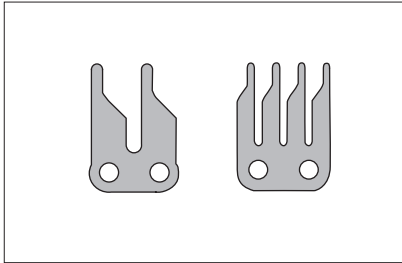


Stainless steel short pitch conveyor chain attachments A1 / K1 Attachments

DIN/ISO Chain No.	P	G	L	F	W	T	h4	d4
	mm	mm	mm	mm	mm	mm	mm	mm
40SS	12.700	23.00	12.700	25.4	35.6	1.50	7.90	3.4
50SS	15.875	28.80	15.875	31.8	46.8	2.03	10.30	5.5
60SS	19.050	34.65	19.050	38.1	56.4	2.42	11.90	5.5
80SS	25.400	45.90	25.400	50.8	73.2	3.25	15.90	6.8
100SS	31.750	57.65	31.750	63.5	89.8	4.00	19.80	9.2
08BSS	12.700	24.00	12.700	25.4	36.4	1.60	8.90	4.3
10BSS	15.875	29.58	15.875	31.8	44.6	1.70	10.31	5.3
12BSS	19.050	34.05	19.050	38.1	52.4	1.85	13.46	6.4
16BSS	25.400	46.40	25.400	50.8	72.6	3.10	15.88	6.4

Short pitch conveyor chain with attachments

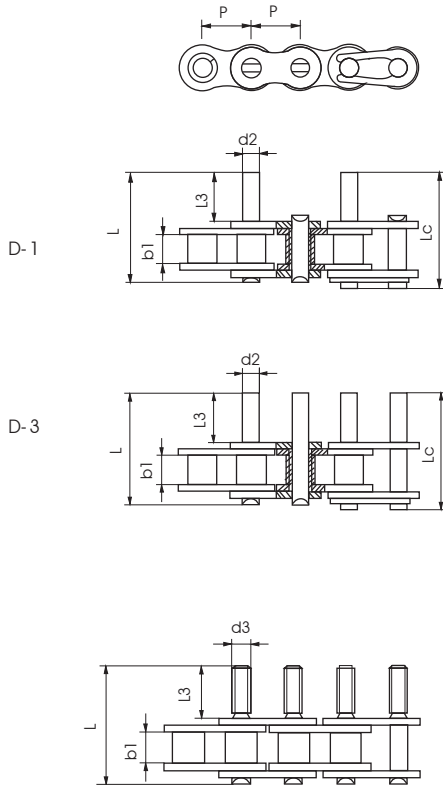
SPECIALS



Short pitch conveyor chain with extended pins

B+A SERIES

D1 / D3 Attachments



DIN/ISO Chain No.	ANSI Chain No.	P	b1	d2	L3	Lc	L
		mm	mm	mm	mm	mm	mm
06C	35	9.525	4.77	3.58	9.5	20.8	21.6
08A	40	12.700	7.85	3.96	9.5	25.1	26.2
10A	50	15.875	9.40	5.08	11.9	31.3	33.1
12A	60	19.050	12.57	5.94	14.3	38.6	40.6
16A	80	25.400	15.75	7.92	19.1	50.3	53.3
20A	100	31.750	18.90	9.53	23.8	61.8	66.1
24A	120	38.100	25.22	11.10	28.6	76.4	80.4
28A	140	44.450	25.22	12.70	33.3	84.8	89.4
32A	160	50.800	31.55	14.27	38.1	99.6	104.4
08B		12.700	7.75	4.45	9.5	25.1	26.6
10B		15.875	9.65	5.08	11.9	30.1	31.5
12B		19.050	11.68	5.72	14.3	35.4	37.1
16B		25.400	17.02	8.28	19.1	53.0	54.3
20B		31.750	19.56	10.19	41.0	79.9	83.6
24B		38.100	25.40	14.63	50.7	101.4	105.8
28B		44.450	30.99	15.90	61.9	124.0	128.4
32B		50.800	30.99	17.81	64.8	126.8	131.8

Chain No.	P	C	H		
	mm	mm	mm	mm	mm
12AF19	19.05	12.57	M4	10.0	34.5
12BF13	19.05	11.68	M4	10.0	31.0

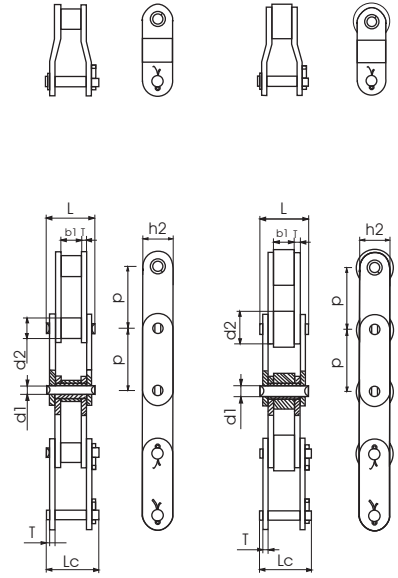
Double pitch conveyor chains

STANDARD

DIN/ISO Chain No.	ANSI Chain No.	Pitch	Roller diameter		Width between inner plates	Pin diameter			Inner plate depth	Plate thickness	Ultimate tensile strength	Average tensile strength	Weight per meter	
			d1 max	b1 min		d2 max	L max	Lc max						h2 max
			mm	mm		mm	mm	mm						mm
C208A	C2040	25.40	7.95	7.85	3.96	16.6	17.8	12.0	1.50	14.1/3205	16.7	0.50		
C208AL	C2042		15.88									0.84		
C208AH	C2040H	25.40	7.95	7.85	3.96	18.8	19.9	12.0	2.03	14.1/3205	17.2	0.65		
C208B	C208BL	25.40	8.51	7.75	4.45	16.7	18.2	11.8	1.60	18.0/4091	19.4	0.55		
C208BL			15.88									0.89		
C210A	C2050	31.75	10.16	9.40	5.08	20.7	22.2	15.0	2.03	22.2/5045	28.1	0.78		
C210AL	C2052		19.05									1.27		
C212A	C2060	38.10	11.91	12.57	5.94	25.9	27.7	18.0	2.42	31.8/7227	36.8	1.12		
C212AL	C2062		22.23									1.61		
C212AH	C2060H	38.10	11.91	12.57	5.94	29.2	31.6	18.0	3.25	31.8/7227	41.6	1.44		
C212AHL	C2062H		22.23									2.07		
C216A	C2080	50.80	15.88	15.75	7.92	32.7	36.5	24.0	3.25	56.7/12886	65.7	2.08		
C216AL	C2082		28.58									3.12		
C216AH	C2080H	50.80	15.88	15.75	7.92	36.2	39.4	24.0	4.00	56.7/12886	70.0	2.54		
C216AHL	C2082H		28.58									3.58		
C220A	C2100	63.50	19.05	18.90	9.53	40.4	44.7	30.0	4.00	88.5/20114	102.6	3.01		
C220AL	C2102		39.67									4.83		
C220AH	C2100H	63.50	19.05	18.90	9.53	43.6	46.9	30.0	4.80	88.5/20114	112.4	3.56		
C220AHL	C2102H		39.67									5.38		
C224A	C2120	76.20	22.23	25.22	11.10	50.3	54.3	35.7	4.80	127.0/28864	147.3	4.66		
C224AL	C2122		44.45									7.66		
C224AH	C2120H	76.20	22.23	25.22	11.10	53.5	57.5	35.7	5.60	127.0/28864	160.9	5.26		
C224AHL	C2122H		44.45									8.26		
C232A	C2160	101.60	28.58	31.75	14.27	64.8	69.6	47.8	6.40	226.8/51545	278.9	8.15		
C232AL	C2162		57.15									13.00		
C232AH	C2160H	101.60	28.58	31.75	14.27	68.2	73.0	47.8	7.20	226.8/51545	285.8	9.06		
C232AHL	C2162H		57.15									12.77		

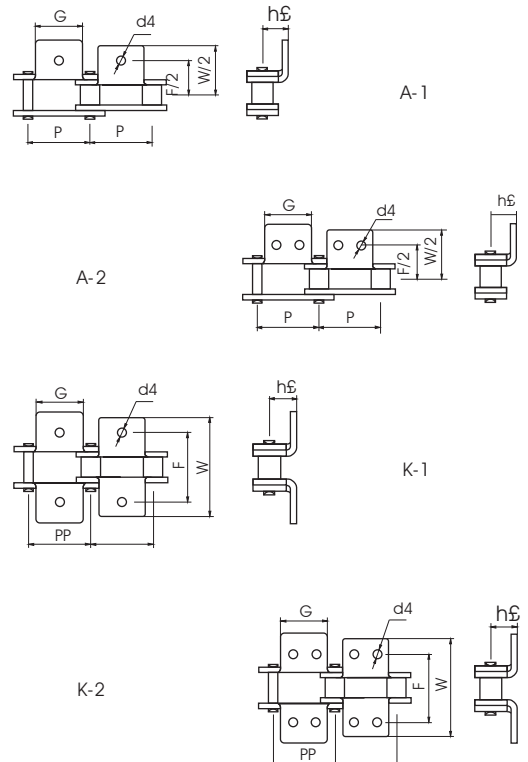
Small Roller Type

Large Roller type



A1 / A2 & K1 / K2 Attachments

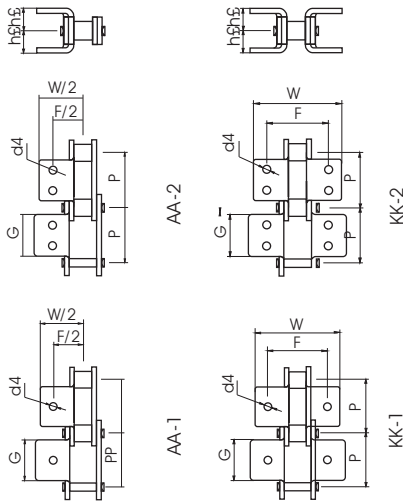
DIN/ISO Chain No.	ANSI Chain No.	P	G	L	F	W	h4	d4
		mm	mm	mm	mm	mm	mm	mm
C208A	C2040	25.4	19.1	9.5	25.4	39.6	9.1	3.4
C208AL	C2042							
C208B		25.4	23.2	12.7	25.4	39.6	9.1	4.5
C208BL								
C210A	C2050	31.75	23.8	11.9	31.8	49.0	11.1	5.5
C210AL	C2052							
C212A	C2060	38.1	28.6	14.3	42.9	67.8	14.7	5.5
C212AL	C2062							
C212AH	C2060H	38.1	28.6	14.3	42.9	67.8	14.7	5.5
C212AHL	C2062H							
C216A	C2080	50.8	38.1	19.1	55.6	87.8	19.1	6.8
C216AL	C2082							
C216AH	C2080H	50.8	38.1	19.1	55.6	87.8	19.1	6.8
C216AHL	C2082H							
C220A	C2100	63.5	47.6	23.8	66.6	107.5	23.4	9.2
C220AL	C2102							
C220AH	C2100H	63.5	47.6	23.8	66.6	107.5	23.4	9.2
C220AHL	C2102H							
C224A	C2120	76.2	57.2	28.6	79.3	121.4	27.8	11.0
C224AL	C2122							
C224AH	C2120H	76.2	57.2	28.6	79.3	121.4	27.8	11.0
C224AHL	C2122H							
C232A	C2160	101.6	76.2	38.1	104.7	151.6	36.5	13.1
C232AL	C2162							
C232AH	C2160H	101.6	76.2	38.1	104.7	151.6	36.5	13.1
C232AHL	C2162H							



Double pitch conveyor chains

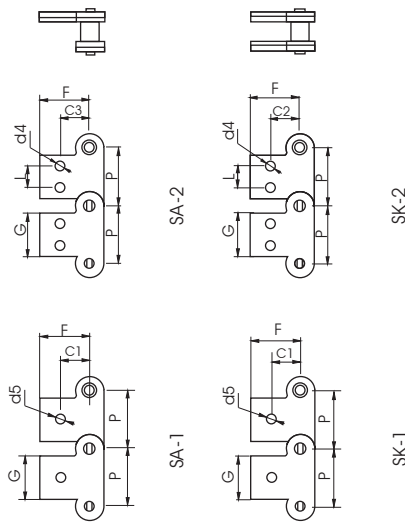
STANDARD

AA-1 / AA-2 & KK-1 / KK-2 Attachments



DIN/ISO Chain No.	ANSI Chain No.	P	G	L	F	W	h4	d4
		mm	mm	mm	mm	mm	mm	mm
C208A C208AL	C2040 C2042	25.4	19.1	9.5	25.4	39.6	9.1	3.4
C208B C208BL		25.4	23.2	12.7	25.4	39.6	9.1	4.5
C210A C210AL	C2050 C2052	31.75	23.8	11.9	31.8	49.0	11.1	5.5
C212A C212AL	C2060 C2062	38.1	28.6	14.3	42.9	67.8	14.7	5.5
C212AH C212AHL	C2060H C2062H	38.1	28.6	14.3	42.9	67.8	14.7	5.5
C216A C216AL	C2080 C2082	50.8	38.1	19.1	55.6	87.8	19.1	6.8
C216AH C216AHL	C2080H C2082H	50.8	38.1	19.1	55.6	87.8	19.1	6.8

SA-1 / SA-2 & SK-1 / SK-2 Attachments



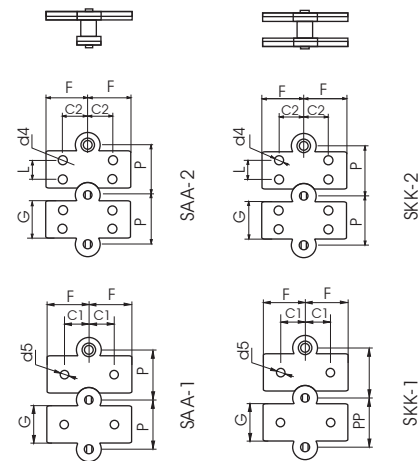
DIN/ISO Chain No.	ANSI Chain No.	P	G	L	C1	C2	F	h4	d4
		mm	mm	mm	mm	mm	mm	mm	mm
C208A C208AL	C2040 C2042	25.4	19.1	9.5	11.1	13.5	20.5	3.4	5.5
C208B C208BL		25.4	23.2	12.7	11.1	13.5	20.5	4.5	5.5
C210A C210AL	C2050 C2052	31.75	23.8	11.9	14.3	15.9	25.0	5.5	6.6
C212A C212AL	C2060 C2062	38.1	28.6	14.3	17.5	19.1	32.9	5.5	9.2
C212AH C212AHL	C2060H C2062H	38.1	28.6	14.3	17.5	19.1	32.9	5.5	9.2
C216A C216AL	C2080 C2082	50.8	38.1	19.1	22.2	25.4	43.5	6.6	11.0
C216AH C216AHL	C2080H C2082H	50.8	38.1	19.1	22.2	25.4	43.5	6.6	11.0
C220A C220AL	C2100 C2102	63.5	47.6	23.8	28.6	31.8	50.4	8.4	13.0
C220AH C220AHL	C2100H C2102H	63.5	47.6	23.8	28.6	31.8	50.4	8.4	13.0

Double pitch conveyor chains

STANDARD

SAA-1 / SAA-2 & SKK-1 / SKK-2 Attachments

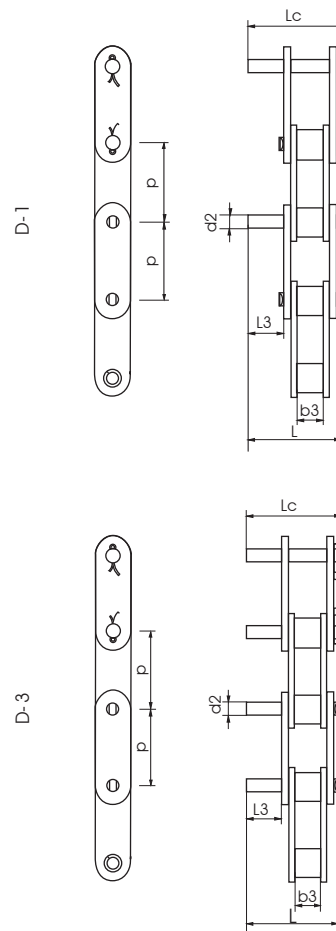
DIN/ISO Chain No.	ANSI Chain No.	P	G	L	C1	C2	F	h4	d4
		mm	mm	mm	mm	mm	mm	mm	mm
C208A C208AL	C2040 C2042	25.4	19.1	9.5	11.1	13.5	20.5	3.4	5.5
C208B C208BL		25.4	23.2	12.7	11.1	13.5	20.5	4.5	5.5
C210A C210AL	C2050 C2052	31.75	23.8	11.9	14.3	15.9	25.0	5.5	6.6
C212A C212AL	C2060 C2062	38.1	28.6	14.3	17.5	19.1	32.9	5.5	9.2
C212AH C212AHL	C2060H C2062H	38.1	28.6	14.3	17.5	19.1	32.9	5.5	9.2
C216A C216AL	C2080 C2082	50.8	38.1	19.1	22.2	25.4	43.5	6.6	11.0
C216AH C216AHL	C2080H C2082H	50.8	38.1	19.1	22.2	25.4	43.5	6.6	11.0



Double pitch conveyor chain with extended pins

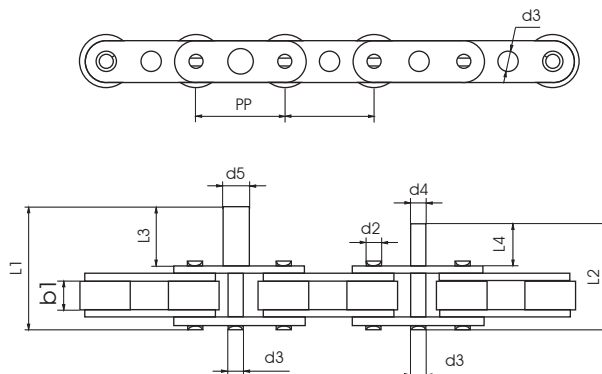
D1 / D3 Attachments

DIN/ISO Chain No.	ANSI Chain No.	P	b1	d2	L3	L	LC
		mm	mm	mm	mm	mm	mm
C208A C208AL	C2040 C2042	25.4	7.85	3.96	9.5	25.1	26.2
C210A C210AL	C2050 C2052	31.75	9.40	5.08	11.9	31.3	33.1
C212A C212AL	C2060 C2062	38.1	12.57	5.94	14.3	38.6	40.6
C212AH C212AHL	C2060H C2062H	38.1	12.57	5.94	14.3	42.0	43.8
C216A C216AL	C2080 C2082	50.8	15.75	7.92	19.1	50.3	53.3
C216AH C216AHL	C2080H C2082H	50.8	15.75	7.92	19.1	53.5	55.0
C220A C220AL	C2100 C2102	63.5	18.90	9.53	23.8	61.8	66.1
C220AH C220AHL	C2100H C2102H	63.5	18.90	9.53	23.8	65.0	68.3
C224AH C224AHL	C2120H C2122H	76.2	25.22	11.10	28.6	79.6	83.6
C232AH C232AHL	C2160H C2162H	101.6	31.75	14.27	38.1	103.0	107.8



Double pitch conveyor chains

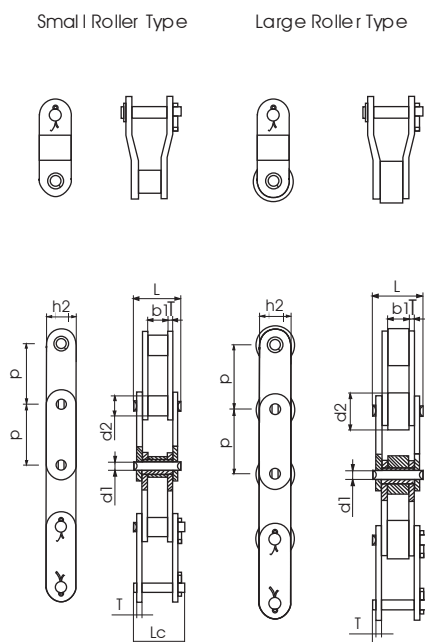
STANDARD



Double pitch conveyor chain with extended pins

Chain No.	P	b1	d2	d3	d4	d5	L3	L1	L4	L2
	mm	mm	mm	mm	mm	mm	mm	mm	mm	mm
C2052F1	31.75	9.4	5.08	6.0	7.0	11.0	30.0	49.8	20.0	39.8

Stainless steel double pitch conveyor chains



Chain No.	Pitch	Roller diameter	Width between inner plates	Pin diameter	Pin length		Inner plate depth	Plate thickness	Breaking load	Weight per meter
	P	d ₁ max	b ₁ min	d ₂ max	L max	L _c max	h ₂ max	T max	Q min	q
	mm	mm	mm	mm	mm	mm	mm	mm	KN/LB	kg/m
C2040SS	25.40	7.95	7.85	3.96	16.6	17.8	12.0	1.50	9.6/2182	0.51
C2042SS		15.88								0.85
C2040HSS	25.40	7.95	7.85	3.96	18.8	19.9	12.0	2.03	9.6/2182	0.66
C208BSS	25.40	8.51	7.75	4.45	16.7	18.2	11.8	1.60	12.0/2727	0.56
C208BLSS		15.88								0.90
C2050SS	31.75	10.16	9.40	5.08	20.7	22.2	15.0	2.03	15.2/3455	0.79
C2052SS		19.05								1.29
C2060SS	38.10	11.91	12.57	5.94	25.9	27.7	18.0	2.42	21.7/4932	1.13
C2062SS		22.23								1.63
C2060HSS	38.10	11.91	12.57	5.94	29.2	31.6	18.0	3.25	21.7/4932	1.46
C2062HSS		22.23								2.10
C2080SS	50.80	15.88	15.75	7.92	32.7	36.5	24.0	3.25	38.9/8841	2.11
C2082SS		28.58								3.16
C2080HSS	50.80	15.88	15.75	7.92	36.2	39.4	24.0	4.00	38.9/8841	2.57
C2082HSS		28.58								3.63
C2100SS	63.50	19.05	18.90	9.53	40.4	44.7	30.0	4.00	60.0/13636	3.05
C2102SS		39.67								4.89
C2100HSS	63.50	19.05	18.90	9.53	43.6	46.9	30.0	4.80	60.0/13636	3.61
C2102HSS		39.67								5.45

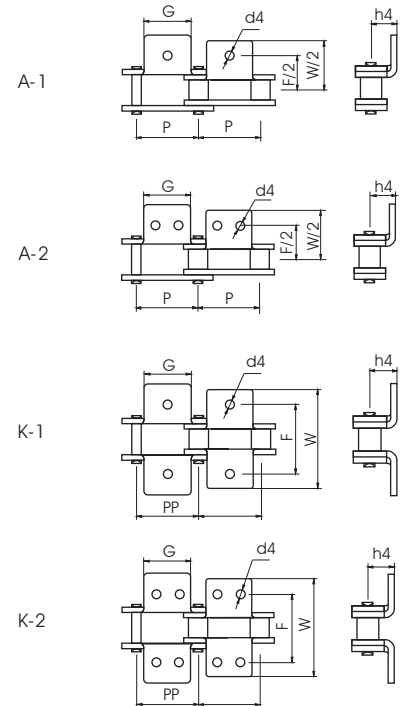
Double pitch conveyor chains

STANDARD

Stainless steel double pitch conveyor chain attachments

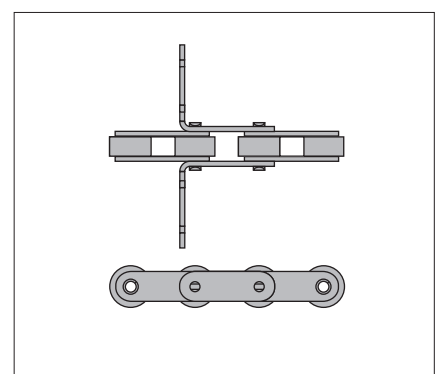
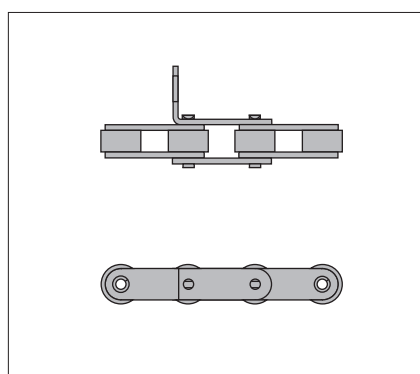
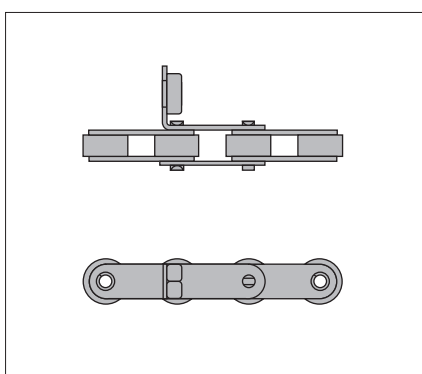
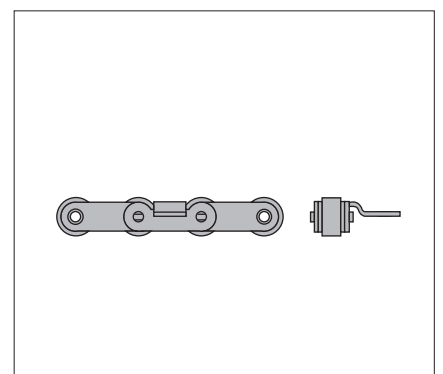
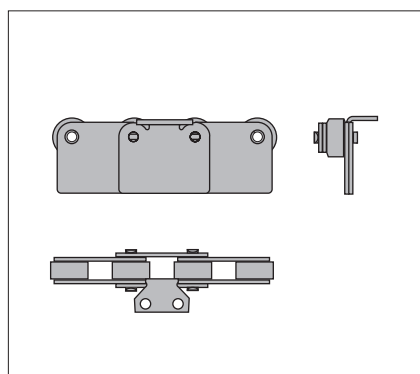
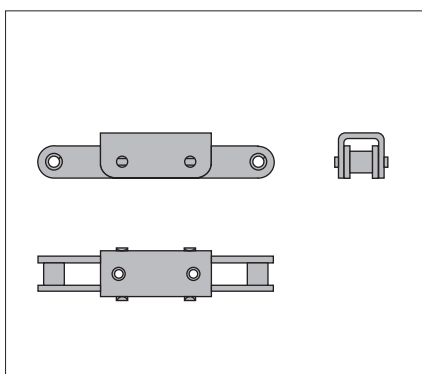
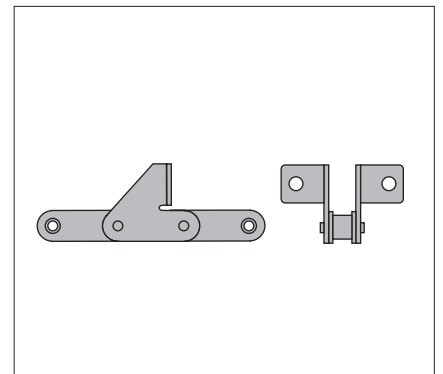
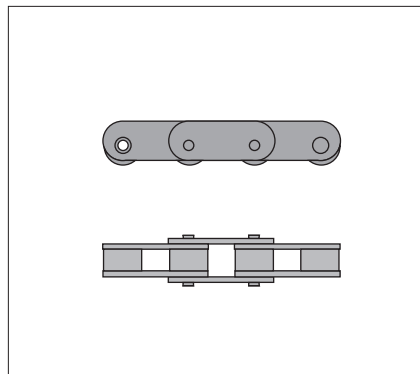
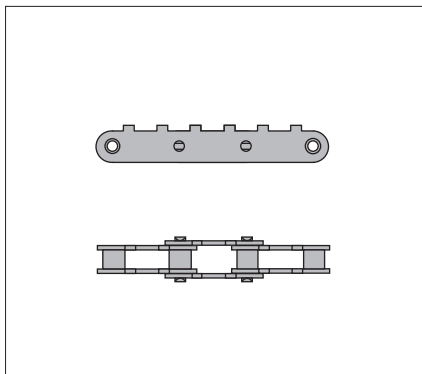
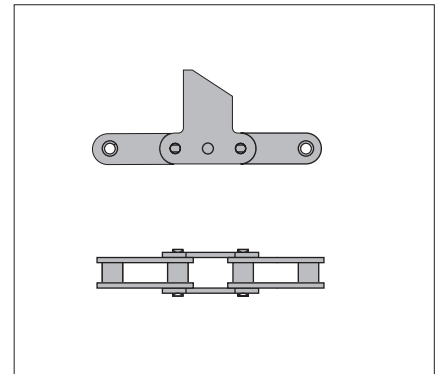
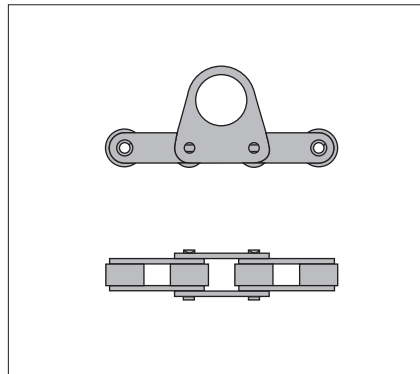
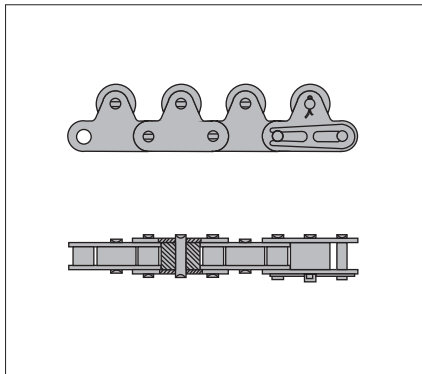
A-1 / A2 & K1 / K-2 Attachments

Chain No.	P	G	L	F	W	h ₄	d ₄
	mm	mm	mm	mm	mm	mm	mm
C2040SS C2042SS	25.4	19.1	9.5	25.4	39.6	9.1	3.4
C208BSS C208BLSS	25.4	23.2	12.7	25.4	39.6	9.1	4.5
C2050SS C2052SS	31.75	23.8	11.9	31.8	49.0	11.1	5.5
C2060SS C2062SS	38.1	28.6	14.3	42.9	67.8	14.7	5.5
C2060HSS C2062HSS	38.1	28.6	14.3	42.9	67.8	14.7	5.5
C2080SS C2082SS	50.8	38.1	19.1	55.6	87.8	19.1	6.8
C2080HSS C2082HSS	50.8	38.1	19.1	55.6	87.8	19.1	6.8
C2100SS C2102SS	63.5	47.6	23.8	66.6	107.5	23.4	9.2
C2100HSS C2102HSS	63.5	47.6	23.8	66.6	107.5	23.4	9.2

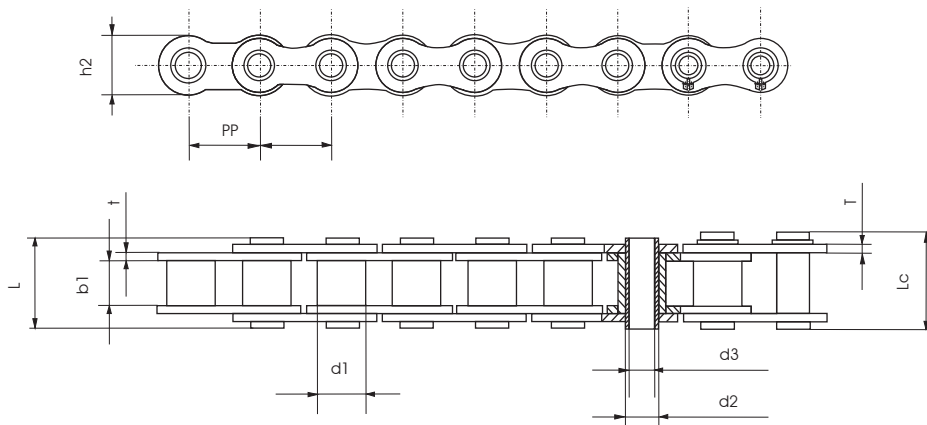


Double pitch conveyor chains

SPECIALS

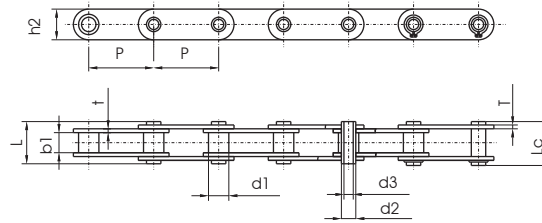


Double pitch conveyor chains

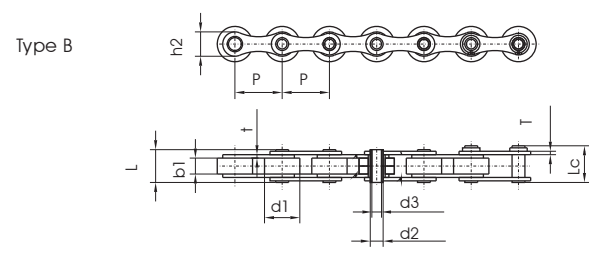
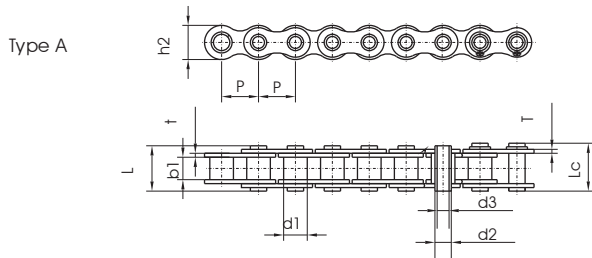


Chain No.	Pitch	Bush diameter	Width between inner plates	Pin diameter		Pin length		Inner plate depth	Plate thickness	Ultimate tensile strength	Average tensile strength	Weight per meter
	P	d1 max	b1 min	d2 max	d3 min	L max	Lc max	h2 max	t/T max	Q min	Q0	q
	mm	mm	mm	mm	mm	mm	mm	mm	mm	KN/LB	kN	kg/m
08BHPF	12.700	8.51	7.75	6.55	4.50	16.4	17.6	11.80	1.6/1.3	11.1/2523	12.1	0.56
08BHPF5	12.700	8.51	7.75	6.30	4.50	16.8	18.0	12.00	1.60	9.6/2128	10.6	0.62
10BHPF3	15.875	10.16	9.65	7.02	5.13	19.5	20.5	14.70	1.70	10.0/2272	11.5	0.86
10BHPF4	15.875	10.16	9.50	7.20	5.00	19.8	21.3	14.00	2.03/1.6	12.5/2840	14.0	0.82
12BHPF2	19.050	12.07	11.68	8.09	6.00	22.7	23.9	16.10	1.85	14.0/3180	16.0	0.82
12BHPF3	19.050	12.07	11.70	8.22	5.75	23.6	24.9	16.20	2.42/1.85	16.0/3636	18.0	1.14
40HP	12.700	7.95	7.85	5.63	4.00	16.5	17.6	12.00	1.50	11.0/2500	12.2	0.54
50HP	15.875	10.16	9.40	7.03	5.13	20.7	21.9	15.09	2.03	20.0/4545	22.6	0.91
60HP	19.050	11.91	12.70	8.31	6.00	25.8	26.8	18.00	2.42	24.0/5455	26.9	1.29
60HPF1	19.050	11.91	12.70	8.31	5.01	25.5	26.8	18.00	2.42	28.0/6364	30.9	1.37
80HP	25.400	15.88	15.75	11.40	8.05	32.5	33.8	24.00	3.25	50.0/11364	52.0	2.26
80HPF2	25.400	15.88	15.75	11.40	8.40	32.5	33.8	24.00	3.25	45.0/10227	48.0	2.23

Hollow pin chains

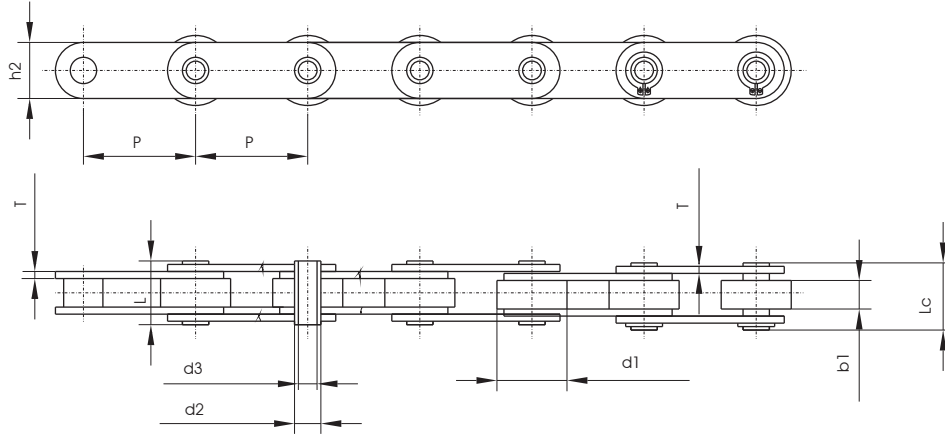


Chain No.	Pitch	Bush diameter	Width between inner plates	Pin diameter			Pin length		Inner plate depth	Plate thickness	Ultimate tensile strength	Average tensile strength	Weight per meter
	P	d1 max	b1 min	d2 max	d3 min	L max	Lc max	h2 max	T max	Q min	Q0	q	
	mm	mm	mm	mm	mm	mm	mm	mm	mm	KN/LB	kN	kg/m	
C2040HP	25.400	7.95	7.85	5.63	4.00	16.5	17.6	12.00	1.50	11.0/2500	12.6	0.46	
C2050HP	31.750	10.16	9.40	7.22	5.12	20.5	21.8	15.00	2.03	20.4/4636	22.8	0.76	
C2060HP	38.100	11.91	12.70	8.31	6.00	25.8	26.8	17.00	2.42	24.0/5455	27.1	1.02	
HP40F1	40.000	18.00	22.00	12.00	8.00	47.5	48.2	35.00	5.00	57.0/13049	63.8	5.38	
HP40F2	40.000	18.00	22.00	12.00	8.20	47.5	48.2	35.00	5.00	57.0/13049	63.0	5.37	
C2080HP	50.800	15.88	15.75	11.40	8.05	32.5	33.8	24.00	3.25	50.0/11364	52.0	1.81	
HP50F1	50.000	26.00	14.50	20.00	14.70	35.3	36.2	40.00	3.10	30.0/6818	33.6	3.98	
C40HP	12.700	7.95	7.85	5.63	4.00	16.5	17.6	12.00	1.50	11.0/2500	12.2	0.64	
C50HP	15.875	10.16	9.40	7.03	5.13	20.7	21.9	15.09	2.03	20.0/4545	22.6	1.05	
C60HP	19.050	11.91	12.70	8.31	6.00	25.8	26.8	18.00	2.42	24.0/5455	26.9	1.52	
C80HP	25.400	15.88	15.75	11.40	8.05	32.5	33.8	24.00	3.25	50.0/11364	52.0	2.63	



Chain No.	Pitch	Roller diameter	Width between inner plates	Pin diameter		Pin length		Inner plate depth	Plate thickness	Ultimate tensile strength	Average tensile strength	Weight per meter	Type
	P	d1 max	b1 min	d2 max	d3 min	L max	Lc max	h2 max	t/T max	Q min	Q0	q	
	mm	mm	mm	mm	mm	mm	mm	mm	mm	KN/LB	kN	kg/m	
10BHB	15.875	10.16	9.65	5.94	4.04	19.3	20.6	14.70	1.70	17.00/3864	20.8	0.86	A
12BHP	19.050	12.07	11.68	6.50	4.00	21.6	22.8	15.90	1.85	23.60/5364	25.9	1.09	A
60HB	19.050	11.91	12.70	7.00	5.01	25.5	26.6	18.00	2.42	20.00/4545	22.4	1.35	A
16BHB F1	25.400	15.88	12.70	9.53	7.05	30.8	32.2	23.00	4.15/3.1	40.00/9091	45.0	2.28	A
HB25.4	25.400	20.00	8.00	8.00	5.20	19.5	20.5	17.00	2.03	25.00/5680	28.0	1.30	A
HP35	35.000	20.00	16.00	13.35	10.20	30.4	31.6	26.30	2.50	23.52/5345	26.4	2.02	A
HP41.75F1	41.750	17.10	20.20	11.11	8.20	35.7	39.0	21.65	3.10	26.50/6022	29.2	1.60	A
HP41.75F2	41.750	17.10	20.20	11.11	8.20	35.7	41.0	25.26	3.10	49.00/11136	54.8	2.04	A
HP41.75F3	41.750	17.00	20.50	11.00	8.30	36.0	39.5	21.40	3.00	27.00/6136	28.0	1.62	A
HP50F2	50.000	31.00	15.00	13.20	10.20	36.5	38.0	25.00	4.00	40.00/9091	43.2	3.40	B
HB38.1	38.100	20.00	8.00	8.00	5.30	19.6	20.7	17.30	2.03	28.00/5682	28.8	0.98	B
HB38.1F1	38.100	20.00	18.00	10.50	5.10	39.0	40.3	22.00	4.00	60.00/13636	64.3	2.59	B
HB50.8	50.800	30.00	10.50	11.40	8.20	27.4	28.6	26.00	3.10	50.00/11364	53.6	2.56	B
HB50	50.000	30.00	10.50	11.40	8.20	27.4	28.6	26.00	3.10	50.00/11364	53.6	2.23	B
HB63	63.000	30.00	10.00	11.40	8.10	26.7	28.1	26.50	3.10	50.00/11364	53.6	2.07	B
HB63F1	63.000	40.00	10.00	11.40	8.10	26.7	28.1	26.50	3.10	50.00/11364	53.6	2.27	B
HB63F2	63.000	40.00	20.00	11.40	8.10	36.7	38.1	26.50	3.10	50.00/11364	53.6	3.20	B
HB63F3	63.000	40.00	15.00	11.40	8.20	35.6	37.0	26.50	4.00	35.00/7955	38.5	3.90	B
HB100	100.000	30.00	10.50	11.40	8.20	27.4	28.6	26.00	3.10	50.00/11364	53.6	1.56	B

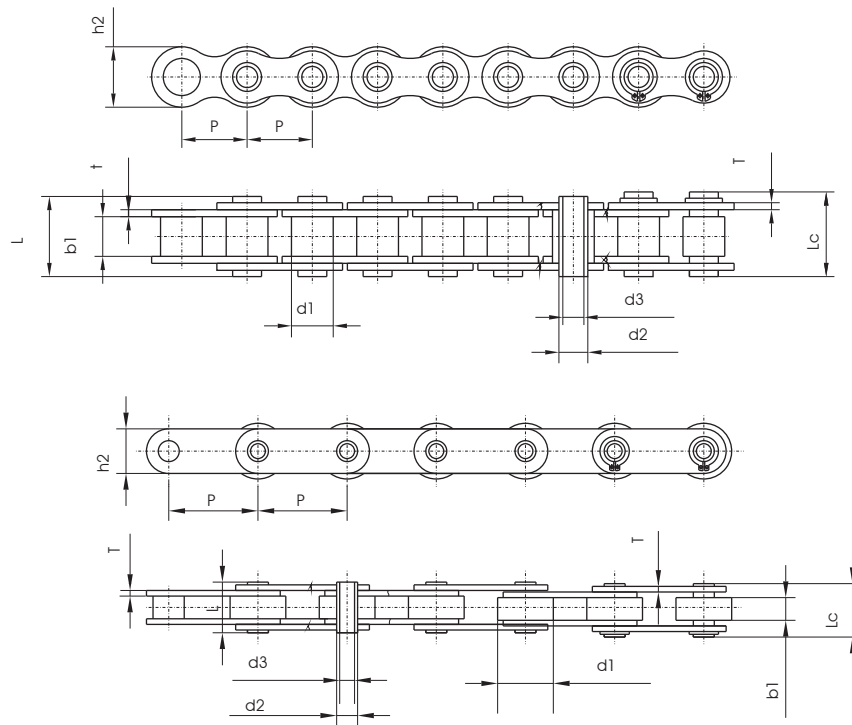
Hollow pin chains



Chain No.	Pitch	Roller diameter	Width between inner plates	Pin diameter		Pin length		Inner plate depth	Plate thickness	Ultimate tensile strength	Average tensile strength	Weight per meter
	P	d1 max	b1 min	d2 max	d3 min	L max	Lc max	h2 max	t/T max	Q min	Q0	q
	mm	mm	mm	mm	mm	mm	mm	mm	mm	KN/LB	kN	kg/m
C2042HP	25.40	15.88	7.85	5.63	4.00	16.5	17.6	12.0	1.50	11.0/2500	12.6	0.78
C2052HP	31.75	19.05	9.53	7.22	5.12	20.5	21.8	15.0	2.03	20.4/4636	22.8	1.25
C2062HP	38.10	22.23	12.70	8.31	6.00	25.8	26.8	17.0	2.42	24.0/5455	27.1	1.72
C2082HP	50.80	28.58	15.75	11.40	8.05	32.4	33.8	24.0	3.25	50.0/11364	52.0	2.82
C2052HPF1	31.75	19.05	9.40	7.03	5.12	20.0	21.5	15.3	1.85	15.0/3409	17.3	1.21
C2052HPF3	31.75	19.05	9.53	7.02	5.13	20.1	21.6	15.09	2.03	19.6/4455	21.6	1.20
C2042H-HP	25.40	15.88	7.85	5.63	4.00	18.8	19.9	12.0	2.03	11.0/2500	13.2	0.95
C2052H-HP	31.75	19.05	9.53	7.22	5.12	22.1	23.4	15.0	2.42	20.4/4545	23.5	1.44
C2062H-HP	38.10	22.23	12.70	8.31	6.00	29.2	30.2	17.0	3.25	24.0/5455	27.6	1.99
C2082H-HP	50.80	28.58	15.75	11.40	8.05	35.7	37.0	24.0	4.00	50.0/11364	56.5	3.34
HP40	40.00	22.00	8.75	9.00	6.00	23.0	24.2	18.0	2.50	27.0/4545	28.0	1.49
HP50	50.00	31.00	14.50	13.20	10.40	31.1	32.5	25.0	3.10	30.0/6818	34.2	3.29
HP50F4	50.00	31.00	15.00	13.20	10.20	36.5	38.0	25.0	4.00	40.0/9091	44.8	3.73
63HPF1	63.00	40.00	15.00	16.00	12.10	35.0	36.2	28.5	4.00	50.0/11364	56.7	4.20
DH4202HP	50.80	31.80	15.00	14.00	10.10	36.3	39.0	26.0	3.80	42.0/9545	51.6	3.75
DH4203HP	76.20	31.80	15.00	14.00	10.10	36.3	39.0	26.0	3.80	42.0/9545	47.1	3.01
DH42035HP	88.90	31.80	15.00	14.00	10.10	36.3	39.0	26.0	3.80	42.0/9545	51.1	2.79
DH4204HP	101.60	31.80	15.00	14.00	10.10	36.3	39.0	26.0	3.80	42.0/9545	51.6	2.63
DH8403HP	76.20	47.60	19.00	19.05	13.60	43.8	46.3	39.0	5.1/3.8	84.3/19159	130.3	6.81
DH8404HP	101.60	47.60	19.00	19.05	13.60	43.8	46.3	39.0	5.1/3.8	84.3/19159	130.3	5.78
DH8406HP	152.40	47.60	19.00	19.05	13.60	43.8	46.3	39.0	5.1/3.8	84.0/19091	130.3	5.18
HB38.1F2	38.10	25.40	12.70	9.50	6.60	26.6	28.0	19.1	2.30	20.0/4545	22.4	2.07
HB50.8F3	50.80	30.00	16.00	14.00	9.00	36.4	37.5	25.5	3.10	42.0/9545	47.0	3.20
HB75	75.00	40.00	22.00	18.00	12.20	42.0	44.0	35.0	4.00	60.0/13636	72.0	5.57
HB76.2	76.20	31.75	15.50	12.70	9.50	35.5	37.0	26.0	4.00	42.0/9545	49.2	3.25
HB76.2F2	76.20	47.60	20.00	24.00	18.50	44.5	46.1	40.0	5.0/4.0	79.0/17953	92.5	6.77
HB80	80.00	50.00	20.00	24.00	18.50	44.5	46.1	40.0	5.0/4.0	79.0/17953	92.5	6.81
HP100	100.00	45.00	22.00	16.00	12.00	46.0	47.5	35.0	5.00	75.0/17044	90.0	6.20
HP100F1	100.00	45.00	22.00	18.00	12.00	47.2	48.5	35.0	5.00	75.0/17044	90.0	6.15
HP101.6F1	101.60	47.60	19.00	19.00	13.20	46.2	48.0	40.0	5.0/4.0	53.0/12045	58.2	6.09
HP101.6F2	101.60	66.70	25.40	26.90	20.10	59.2	60.7	51.0	7.1/5.1	150.0/34088	160.0	14.23
HP152	152.40	66.70	25.40	26.90	19.56	57.2	59.5	50.8	7.1/5.1	94.0/21362	107.8	9.9
HP152.4F1	152.40	47.60	19.00	19.00	13.20	46.2	48.0	40.0	5.0/4.0	54.0/12270	59.5	5.0

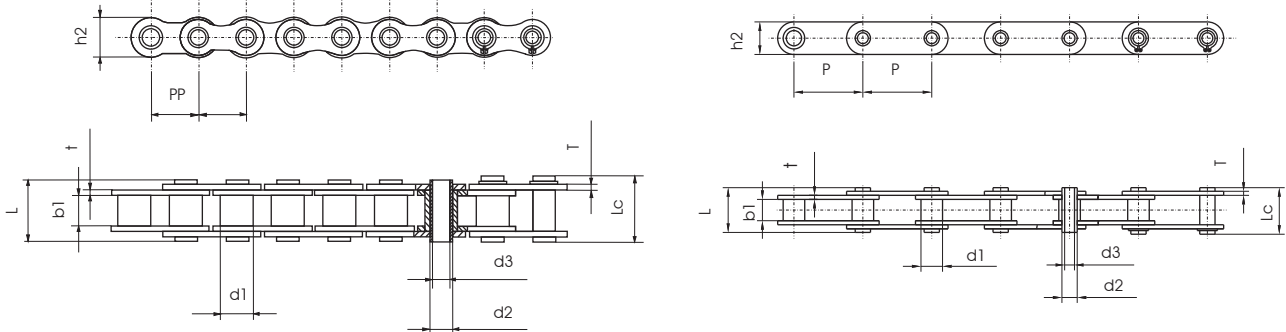
Hollow pin chains

With pins made of precision hollow tubes instead of solid rods, hollow pins (HP) chains give unlimited possibilities for cross rod/attachment spacing, and are a great choice for a wide variety of conveyor chains. It allows for easy assembly and disassembly of attachments to and from the base chain. This reduces time and cost during installation and maintenance.



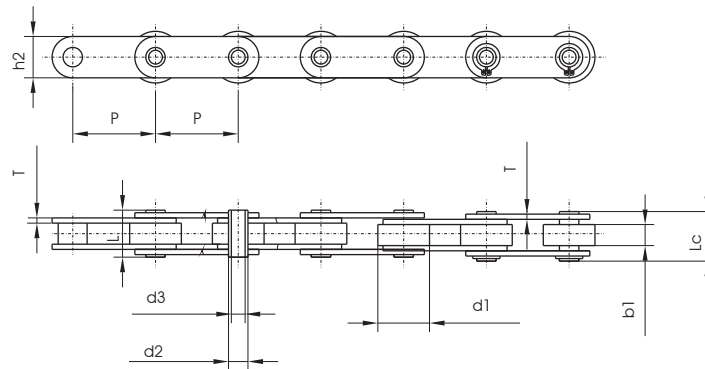
Chain No.	Pitch	Roller diameter	Width between inner plates	Pin diameter		Pin length		Inner plate depth	Plate thickness	Ultimate tensile strength	Average tensile strength	Weight per meter	Type
	P	d1 max	b1 min	d2 max	d3 min	L max	Lc max	h2 max	t/T max	Q min	Q0	q	
	mm	mm	mm	mm	mm	mm	mm	mm	mm	KN/LB	kN	kg/m	
08BHPP2	12.700	8.51	13.20	6.65	5.20	18.0	19.2	11.8	1.6/1.3	10.00/2273	11.4	0.50	A
08BHPP3	12.700	8.51	13.40	6.65	4.00	19.0	20.2	11.8	1.70	14.00/3182	16.8	0.69	A
HB12.7	12.700	8.51	13.40	6.65	4.10	19.0	20.2	11.8	1.70	14.00/3182	16.8	0.69	A
10BHPP1	15.875	10.16	13.41	7.03	5.00	19.2	20.2	14.0	1.85	17.00/3864	20.6	0.83	A
10BHPP2	15.875	10.16	10.40	7.03	5.00	17.0	18.0	14.0	1.85	15.00/3409	17.3	0.74	A
12BHPP1	19.050	12.07	16.00	8.03	5.40	22.7	23.9	15.8	1.85	25.00/5682	28.8	1.09	A
16BHPP1	25.400	15.88	25.58	11.50	8.10	36.5	37.6	21.0	4.15/3.1	45.00/10227	52.2	2.21	A
50HPP1	15.875	10.16	13.60	7.03	5.13	20.7	21.9	14.4	2.03	18.00/4091	21.6	0.92	A
60HPP2	19.050	11.91	11.23	5.63	4.05	16.5	17.6	10.4	1.50	10.00/2273	10.8	0.62	A
60HPP3	19.050	11.91	17.20	8.40	6.10	24.7	26.0	18.0	2.03	20.00/4546	24.0	1.54	A
63HP	63.000	40.00	23.50	16.00	12.00	35.3	38.3	28.6	4.00	65.00/14773	71.5	4.14	B
63HPP2	63.000	40.00	25.80	14.00	8.20	39.1	41.1	20.0	5.00	50.00/11364	65.7	4.17	B
63HPP4	63.000	40.00	23.50	16.00	12.30	34.7	37.7	28.6	4.00	44.00/10000	57.2	4.13	B
63HPP6	63.000	40.00	28.94	16.00	10.30	41.8	43.4	28.6	4.00	44.00/10000	57.2	5.18	B
C2122HPP1	76.200	47.60	29.00	17.81	12.70	43.3	44.7	38.1	4.80	53.34/12123	59.2	7.05	B

Hollow pin chains



Stainless steel hollow pin chains

Chain No.	Pitch	Bush diameter	Width between inner plates	Pin diameter		Pin length		Inner plate depth	Plate thickness	Breaking Load	Weight per meter	Type
	P	d ₁ max	b ₁ min	d ₂ max	d ₃ min	L max	L _c max	h ₂ max	t/T max	Q min	q	
	mm	mm	mm	mm	mm	mm	mm	mm	mm	KN/LB	kg/m	
08BHPFSS	12.700	8.51	7.75	6.55	4.50	16.4	17.6	11.80	1.6/1.3	7.8/1773	0.57	A
40HPSS	12.700	7.95	7.85	5.63	4.00	16.5	17.6	12.00	1.50	7.7/1750	0.55	A
50HPSS	15.875	10.16	9.40	7.03	5.13	20.7	21.9	15.09	2.03	14.0/3182	0.92	A
60HPSS	19.050	11.91	12.70	8.31	6.00	25.8	26.8	18.00	2.42	16.8/3818	1.31	A
*12BHPSS	19.050	12.07	11.68	6.50	4.00	21.6	22.8	15.90	1.85	16.5/3750	1.10	A
80HPSS	25.400	15.88	15.75	11.40	8.05	32.5	33.8	24.00	3.25	35.0/7955	2.29	A
C2040HPSS	25.400	7.95	7.85	5.63	4.00	16.5	17.6	12.00	1.50	7.7/1750	0.47	B
C2050HPSS	31.750	10.16	9.40	7.22	5.12	20.5	21.8	15.00	2.03	14.3/3250	0.77	B
C2060HPSS	38.100	11.91	12.70	8.31	6.00	25.8	26.8	17.00	2.42	16.8/3818	1.03	B
C2080HPSS	50.800	15.88	15.75	11.40	8.05	32.5	33.8	24.00	3.25	35.0/7955	1.83	B
*HB50.8SS	50.800	30.00	10.50	11.40	8.20	27.4	28.6	26.00	3.10	35.0/7955	2.60	



Stainless steel hollow pin chains

Chain No.	Pitch	Roller diameter	Width between inner plates	Pin diameter		Pin length		Inner plate depth	Plate thickness	Breaking Load	Weight per meter
	P	d ₁ max	b ₁ min	d ₂ max	d ₃ min	L max	L _c max	h ₂ max	T max	Q min	q
	mm	mm	mm	mm	mm	mm	mm	mm	mm	KN/LB	kg/m
C2040HPSS	25.40	15.88	7.85	5.63	4.00	16.5	17.6	12.0	1.50	7.7/1750	0.79
C2052HPSS	31.75	19.05	9.53	7.22	5.12	20.5	21.8	15.0	2.03	14.3/3250	1.27
C2062HPSS	38.10	22.23	12.70	8.31	6.00	25.8	26.8	17.0	2.42	16.8/3818	1.74
C2082HPSS	50.80	28.58	15.75	11.40	8.05	32.4	33.8	24.0	3.25	35.0/7955	2.86
C2042H-HPSS	25.40	15.88	7.85	5.63	4.00	18.8	19.9	12.0	2.03	7.7/1750	0.96
C2052H-HPSS	31.75	19.05	9.53	7.22	5.12	22.1	23.4	15.0	2.42	14.3/3250	1.46
C2062H-HPSS	38.10	22.23	12.70	8.31	6.00	29.2	30.2	17.0	3.25	16.8/3818	2.02
C2082H-HPSS	50.80	28.58	15.75	11.40	8.05	36.2	37.6	24.0	4.00	35.0/7955	3.30



Notes

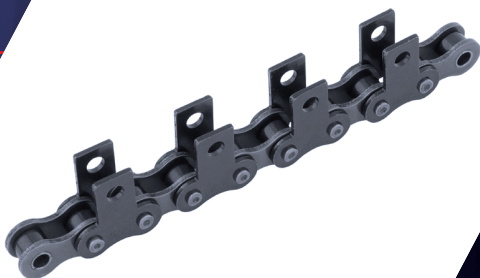


iRiS
chains

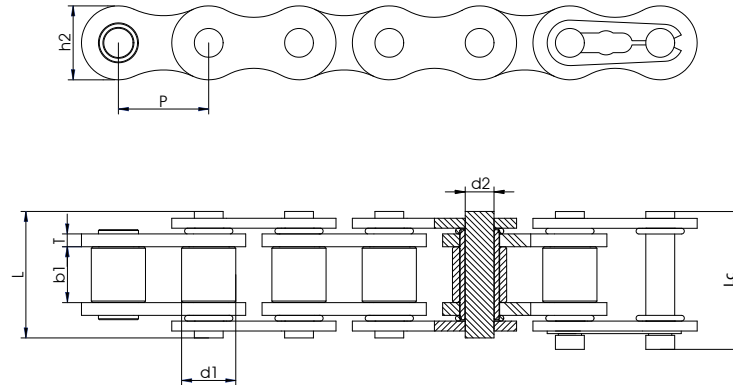
Specialities Chains

IRIS supplies many varieties of non-standard special attachments, each for a specific application requirement, but the Technical Service Team offers solutions for individual customer demands and designs custom made products.

IRIS provides several different varieties of roller chains for specialized applications, each with distinctive features. In most cases they are interchangeable with ANSI or ISO standard roller chains, and operate on standard sprockets.



O'ring chains

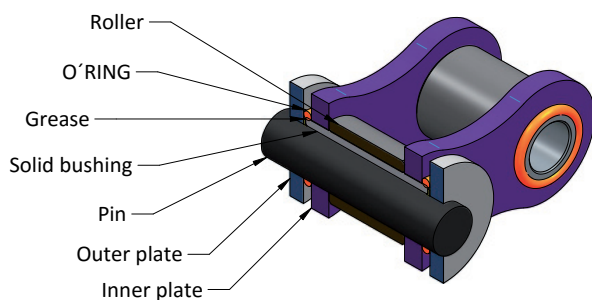


ISO SERIES

DIN/ISO No.	P	Roller diameter	Width between plates	Pin diameter	Pin length		Plate depth	Plate thickness	Ultimate Tensile strength	Average tensile strength	Weight per meter
		d1 max	b1 min	d2 max	L max	Lc max	h2 max	T max	Q min	Q0	q
	mm	mm	mm	mm	mm	mm	mm	mm	KN/lbf	kN	kg/m
8B-1 OR	12,700	8,51	7,75	4,45	18,8	19,9	11,8	1,6	18.0/4091	20,100	0,740
10B-1 OR	15,875	10,16	9,65	5,08	21,4	22,95	14,15	1,6	22.4/5091	28,500	0,990
12B-1 OR	19,050	12,07	11,68	5,72	24,9	26,8	16	1,85	29.0/6591	33,300	1,270
16B-1 OR	25,400	15,88	17,02	8,26	38,9	41,3	20,3	4	60.0/13636	73,900	2,780
20B-1 OR	31,750	19,05	19,56	10,19	44,5	48,5	26,4	4,5	95.0/21591	107,400	3,780

ASA SERIES

DIN/ISO No.	P	Roller diameter	Width between plates	Pin diameter	Pin length		Plate depth	Plate thickness	Ultimate Tensile strength	Average tensile strength	Weight per meter
		d1 max	b1 min	d2 max	L max	Lc max	h2 max	T max	Q min	Q0	q
	mm	mm	mm	mm	mm	mm	mm	mm	KN/lbf	kN	kg/m
40-1 OR	12,700	7,95	7,85	3,96	18,30	19,60	12,00	1,50	14.1/3205	17,50	0,67
50-1 OR	15,875	10,16	9,40	5,30	25,30	26,90	15,10	2,40	22.2/5045	30,50	1,07
60-1 OR	19,050	11,91	12,57	5,94	28,50	30,40	18,00	2,42	31.8/7227	41,50	1,62
60 H-1 OR	19,050	11,91	12,57	5,94	31,70	33,20	18,00	3,25	55.0/12500	58,00	1,96
80-1 OR	25,400	15,88	15,75	7,92	35,60	37,30	14,00	3,25	56.7/12886	69,40	2,70



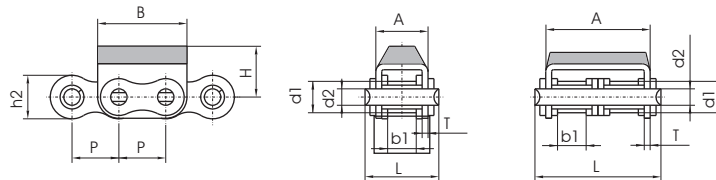
Providing continuous lubrication is always the best way to maximize chain life. However, for an application that must be clean and free of oil & grease, or is difficult to access for maintenance, or requires saving on the cost of daily lubrication, or requires the longest chain life, the O'ring chain is a must. These products are suitable for both driving and conveying applications.

O'ring chain has seals which keep high quality lubricant in and keep dirt and other contaminants out of the chain's bearing area. It is the longest lasting type of lube free chain, especially in agricultural harvesting equipment.

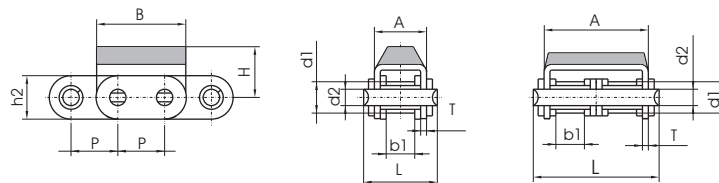
Note: Double strand, triple strand and anticorrosion chains are available upon request.

Roller chains with rubber top attachments

These chains feature rubber pads that allow to transport products without damaging their surface finish. Traditional applications are found in the wood-working, furniture, glass and ceramic tiles industries. The base chains belong to the European series, single or double strand. Vulcanized rubber pads can be supplied in different colours and in different shore hardness depending on the wear resistance and softness required by the application. The standard hardness is about 50 ShA. Pads are supplied in a variety of different shapes.

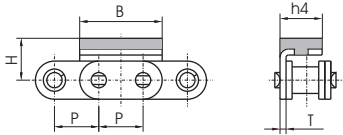


TSI Chain No.	Pitch	Roller diameter	Width between inner plates	Pin diameter	Pin length	Plate and attachment dimension					Ultimate tensile strength	Weight per meter
	P	d1 max	b1 min	d2 max	L max	h2 max	A	B	H	T	Q min	q
	mm	mm	mm	mm	mm	mm	mm	mm	mm	mm	KN/LB	kg/m
08B-G1	12.70	8.51	7.75	4.45	20.0	11.8	14.6	24.2	12.3	1.60	18.0/4091	1.19
08B-G2	12.70	8.51	7.75	4.45	34.3	11.8	28.4	24.2	12.3	1.50	32.0/7273	2.07
10B-G1	15.875	10.16	9.65	5.08	23.2	14.7	16.8	30.0	17.0	1.60	19.0/4318	1.62
10B-G2	15.875	10.16	9.65	5.08	39.7	14.7	33.3	30.0	17.0	1.50	44.5/10114	2.56
12B-G1	19.05	12.07	11.68	5.72	25.7	16.0	19.6	36.0	21.0	1.85	29.0/6591	2.01
12B-G2	19.05	12.07	11.68	5.72	45.3	16.0	39.1	36.0	16.0	1.85	57.8/13136	3.21
16A-G1	25.40	15.88	15.75	7.92	37.2	24.0	27.5	46.0	20.0	2.42	42.0/9545	3.97
16B-G1	25.40	15.88	17.02	8.28	39.7	21.0	29.05	49.0	21.4	1.60	58.0/13047	3.83
20B-G1	31.75	19.05	19.56	10.19	48.0	26.4	36.0	57.0	27.0	3.50	85.0/19318	6.19
24B-G1	38.10	25.40	25.40	14.63	61.6	33.2	47.0	72.6	34.0	4.50	160.0/36363	11.25

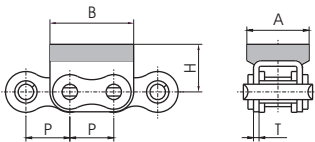


Chain No.	Pitch	Roller diameter	Width between inner plates	Pin diameter	Pin length	Plate and attachment dimension					Ultimate tensile strength	Weight per meter
	P	d1 max	b1 min	d2 max	L max	h2 max	A	B	H	T	Q min	q
	mm	mm	mm	mm	mm	mm	mm	mm	mm	mm	KN/LB	kg/m
C08B-G1	12.70	8.51	7.75	4.45	20.0	11.8	14.6	24.2	12.3	1.60	18.0/4091	1.30
C08B-G2	12.70	8.51	7.75	4.45	34.3	11.8	28.4	24.2	12.3	1.50	32.0/7273	2.29
C10B-G1	15.875	10.16	9.65	5.08	23.2	14.7	16.8	30.0	17.0	1.60	19.0/4318	1.75
C10B-G2	15.875	10.16	9.65	5.08	39.7	14.7	33.3	30.0	17.0	1.50	44.5/10114	2.95
C12B-G1	19.05	12.07	11.68	5.72	25.7	16.0	19.6	36.0	21.0	1.85	29.0/6591	2.15
C12B-G2	19.05	12.07	11.68	5.72	45.3	16.0	39.1	36.0	16.0	1.85	57.8/13136	3.48
C16A-G1	25.40	15.88	15.75	7.92	37.2	24.0	27.5	46.0	20.0	2.42	42.0/9545	4.34
C16B-G1	25.40	15.88	17.02	8.28	39.7	21.0	29.05	49.0	21.4	1.60	58.0/13047	4.11
C20B-G1	31.75	19.05	19.56	10.19	48.0	26.4	36.0	57.0	27.0	3.50	85.0/19318	6.65
C24B-G1	38.10	25.40	25.40	14.63	61.6	33.2	47.0	72.6	34.0	4.50	160.0/36363	11.63

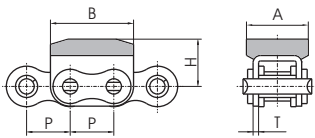
Roller chains with rubber top attachments



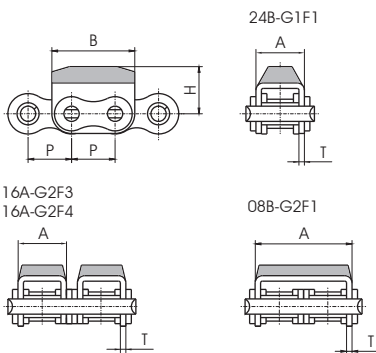
Chain No.	P	B	H	h4	T
	mm	mm	mm	mm	mm
06BF9	9.525	17.73	9.0	9.05	1.3



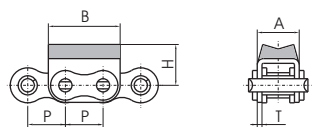
Chain No.	P	A	B	H	T
	mm	mm	mm	mm	mm
08B-G1F1	12.7	18.0	24.2	12.3	1.6



Chain No.	P	A	B	H	T
	mm	mm	mm	mm	mm
08B-G1F4	12.7	18.0	24.2	12.3	1.6

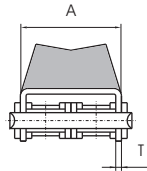
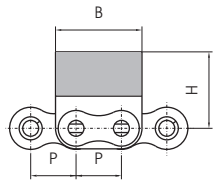


Chain No.	P	A	B	H	T
	mm	mm	mm	mm	mm
08B-G2F1	12.7	28.4	24.2	12.0	1.5
16A-G2F3	25.4	27.5	49.0	21.4	2.42
16A-G2F4	25.4	27.0	49.2	20.0	2.03
24B-G1F1	38.1	47.0	72.6	34.0	4.5

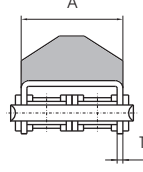
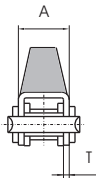
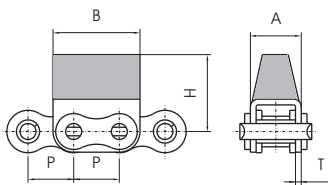


Chain No.	P	A	B	H	T
	mm	mm	mm	mm	mm
12B-G1F1	19.05	19.6	36.0	18.0	1.85

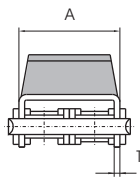
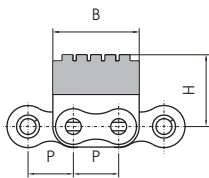
Roller chains with rubber top attachments



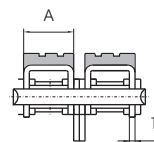
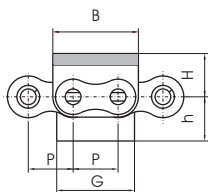
Chain No.	P	A	B	H	T
	mm	mm	mm	mm	mm
12B-G2F4	19,05	39,1	36,0	27,5	1,85



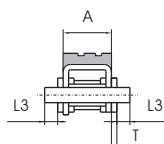
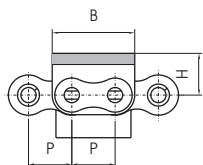
Chain No.	P	A	B	H	T
	mm	mm	mm	mm	mm
12B-G2F5	19,05	39,1	36,0	28,0	1,85
16A-G1F1	25,40	27,5	46,0	21,4	2,42



Chain No.	P	A	B	H	T
	mm	mm	mm	mm	mm
12B-G2F6	19,05	39,1	37,3	28,2	1,85



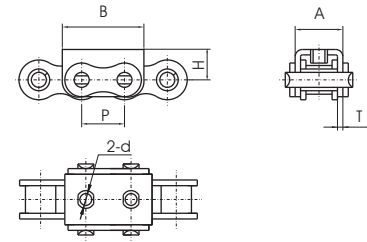
Chain No.	P	A	B	G	h	H	T
	mm	mm	mm	mm	mm	mm	mm
16A-G2F1	25,4	27,0	49,2	45,4	25,0	20,0	2,03



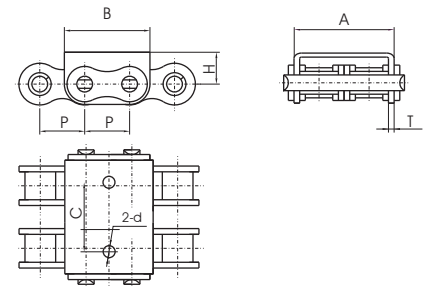
Chain No.	P	A	B	L3	H	T
	mm	mm	mm	mm	mm	mm
16A-G1F3	25,4	27,5	49,0	8,25	21,4	2,42

Roller chains with U type attachments

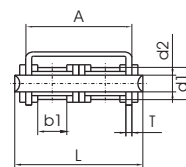
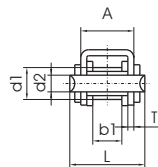
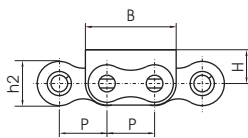
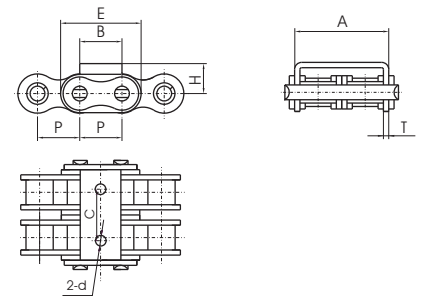
Chain No.	P	A	B	d	H	T
	mm	mm	mm	mm	mm	mm
10B-U1F1	15.875	16.8	30.0	M5	11.3	1.6
16A-U1F2	25.4	27.3	49.5	M6	16.45	2.3



Chain No.	P	A	B	C	d	H	T
	mm	mm	mm	mm	mm	mm	mm
08B-U2F2	12.7	28.4	24.2	17.5	3.3	8.3	1.5



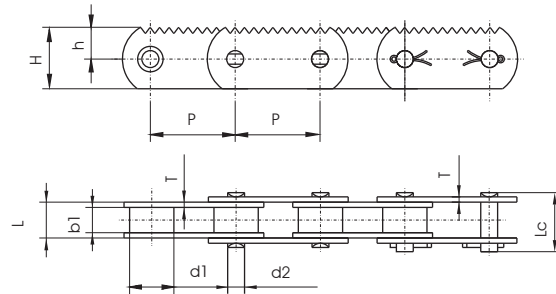
Chain No.	P	A	B	C	d	E	H	T
	mm	mm	mm	mm	mm	mm	mm	mm
16B-U2F1	25.4	60.93	25.0	33.5	9.0	49.0	16.2	1.6



Chain No.	Pitch	Roller diameter	Width between inner plates	Pin diameter	Pin length	Plate and attachment dimension					Ultimate tensile strength	Weight per meter
	P	d1 max	b1 min	d2 max	L max	h2 max	A	B	H	T	Q min	q
	mm	mm	mm	mm	mm	mm	mm	mm	mm	mm	KN/LB	kg/m
08B-U1	12.70	8.51	7.75	4.45	20.0	11.8	14.6	24.2	8.3	1.60	18.0/4091	1.13
08B-U2	12.70	8.51	7.75	4.45	34.3	11.8	28.4	24.2	8.3	1.50	32.0/7273	1.96
10B-U1	15.875	10.16	9.65	5.08	23.2	14.7	16.8	30.0	11.3	1.60	19.0/4318	1.53
10B-U2	15.875	10.16	9.65	5.08	39.7	14.7	33.3	30.0	11.3	1.50	44.5/10114	2.47
12B-U1	19.05	12.07	11.68	5.72	25.7	16.0	19.6	36.0	13.0	1.85	29.0/6591	1.90
12B-U2	19.05	12.07	11.68	5.72	45.3	16.0	39.1	36.0	12.0	1.85	57.8/13136	3.03
16A-U1	25.40	15.88	15.75	7.92	37.2	24.0	27.5	46.0	16.0	2.42	42.0/9545	3.87
16B-U1	25.40	15.88	17.02	8.28	39.7	21.0	29.05	49.0	15.4	1.60	58.0/13407	3.73
20BF2	31.75	19.05	19.56	10.19	48.0	26.4	36.0	57.0	21.0	3.50	85.0/19318	6.01
24B-U1	38.10	25.40	25.40	14.63	61.6	33.2	47.0	72.6	28.0	4.50	160.0/36363	10.88

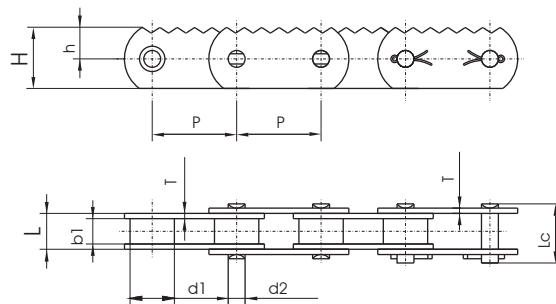
Sharp top chains

Chain No.	P	h	H
	mm	mm	mm
P80	80.0	30	58



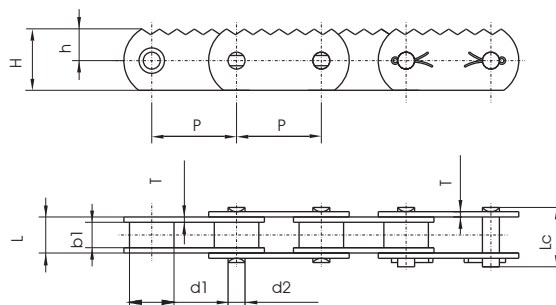
Chain No.	Pitch	Roller diameter	Width between inner plates	Pin diameter	Pin length		Plate thickness	Ultimate tensile strength	Average tensile strength	Weight per meter
	P	d1 max	b1 min	d2 max	L max	Lc max	T max	Q min	Q0	q
	mm	mm	mm	mm	mm	mm	mm	KN/LB	kN	kg/m
P80	80.0	42.0	24.0	15.0	55.0	60.0	6.0	250.0/56818	275.0	11.3

Chain No.	P	h	H
	mm	mm	mm
P80F3	80.0	25	55



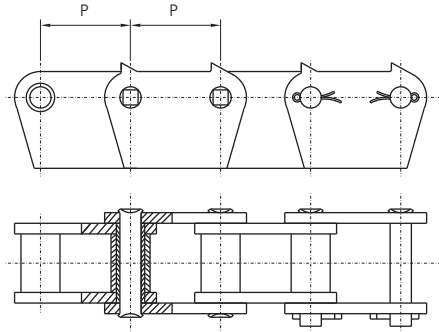
Chain No.	Pitch	Roller diameter	Width between inner plates	Pin diameter	Pin length		Plate thickness	Ultimate tensile strength	Average tensile strength	Weight per meter
	P	d1 max	b1 min	d2 max	L max	Lc max	T max	Q min	Q0	q
	mm	mm	mm	mm	mm	mm	mm	KN/LB	kN	kg/m
P80F3	80.0	30.0	32.0	15.0	58.6	62.6	5.0	98.0/20909	107.0	9.12

Chain No.	P	h	H	B
	mm	mm	mm	mm
P80F2	80.0	17.5	30.0	51

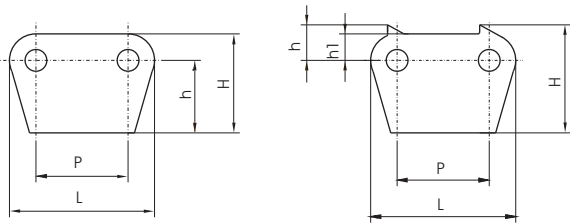


Chain No.	Pitch	Roller diameter	Width between inner plates	Pin diameter	Pin length		Plate thickness	Ultimate tensile strength	Average tensile strength	Weight per meter
	P	d1 max	b1 min	d2 max	L max	Lc max	T max	Q min	Q0	q
	mm	mm	mm	mm	mm	mm	mm	KN/LB	kN	kg/m
P80F2	80.0	30.0	18.0	10.0	44.6	48.3	5.0	61.74/14030	70.0	4.15

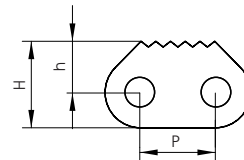
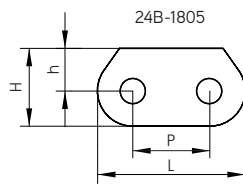
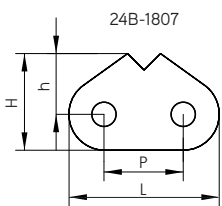
Sharp top chains



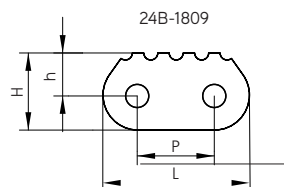
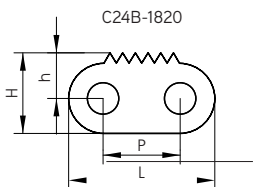
Chain No.	Pitch	Roller diameter	Width between inner plates	Pin diameter	Pin length		Plate thickness	Ultimate tensile strength	Average tensile strength	Weight per meter
	P	d1 max	b1 min	d2 max	L max	Lc max	T max	Q min	Q0	q
	mm	mm	mm	mm	mm	mm	mm	KN/LB	kN	kg/m
32B-1-1872	50.8	29.21	33.0	17.81	66.0	71.0	6.0	250.0/56818	275.0	13.54



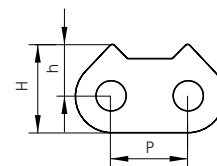
Chain No.	P	L	h1	h	H
	mm	mm	mm	mm	mm
32B-1872	50.8	92.8		43.0	64.0
32B-1874	50.8	92.8	21.0	30.0	73.0



Chain No.	P	h	H
	mm	mm	mm
20BF8	31.75	19.8	33.0
20B-1310	31.75	19.8	33.0
C24B-6STCF1	38.10	23.5	40.0

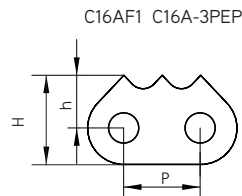
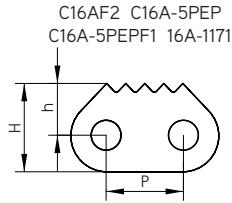


Chain No.	P	L	h	H
	mm	mm	mm	mm
24B-1805	38.1	73.1	21.0	38.5
24B-1807	38.1	73.1	25.5	43.0
24B-1809	38.1	73.1	21.0	38.5
C24B-1820	38.1	73.1	21.0	38.5

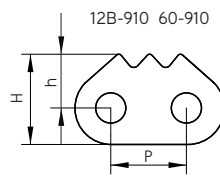
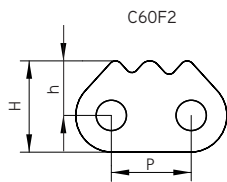


Chain No.	P	h	H
	mm	mm	mm
20B-1350	31.75	19.8	33.00

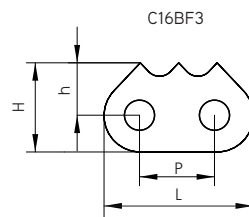
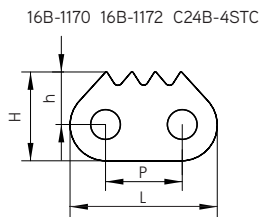
Sharp top chains



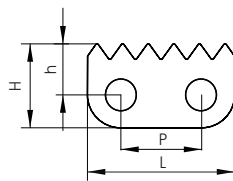
Chain No.	P	h	H
	mm	mm	mm
16A-1171	25.4	16.00	26.40
C16A-3PEP	25.4	17.40	29.00
C16A-5PEP	25.4	17.40	29.00
C16A-5PEPF1	25.4	17.30	29.50
C16AF1	25.4	17.50	29.50
C16AF2	25.4	17.50	29.50



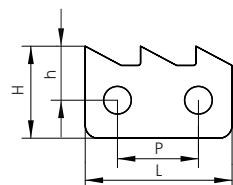
Chain No.	P	h	H
	mm	mm	mm
12B-910	19.05	13.70	21.70
60-910	19.05	12.70	21.70
C60F2	19.05	13.38	22.48



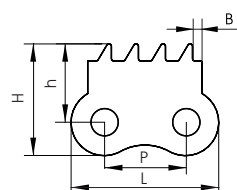
Chain No.	P	L	h	H
	mm	mm	mm	mm
C16BF3	25.4	46.4	18.7	29.2
16B-1170	25.4	46.1	16.0	26.5
16B-1172	25.4	46.1	15.0	25.5
C24B-4STC	38.1	70.4	18.3	35.0



Chain No.	P	L	h	H
	mm	mm	mm	mm
16B-1185	25.4	46.0	16.0	26.5
16B-6STC	25.4	46.0	16.0	26.5

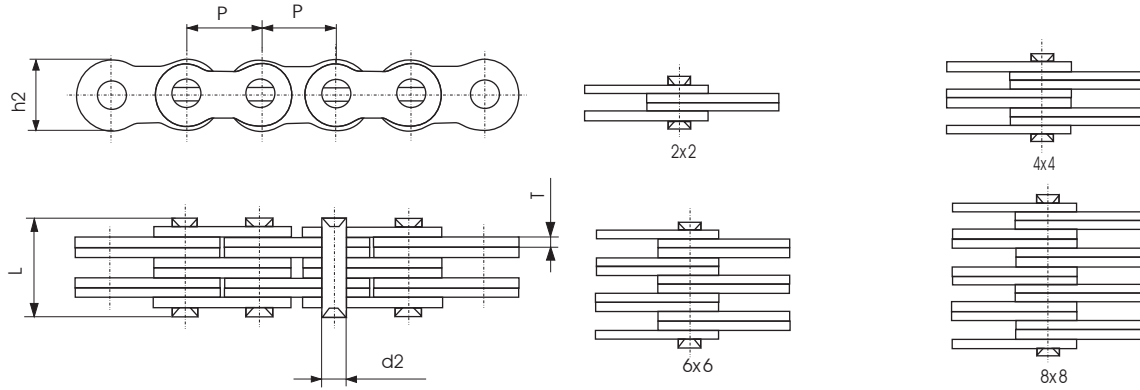


Chain No.	P	L	h	H
	mm	mm	mm	mm
20AF1	31.75	57.2	14.75	35.84



Chain No.	P	L	h	H	B
	mm	mm	mm	mm	mm
08B-940	12.7	17.9	9.6	17.5	1.5

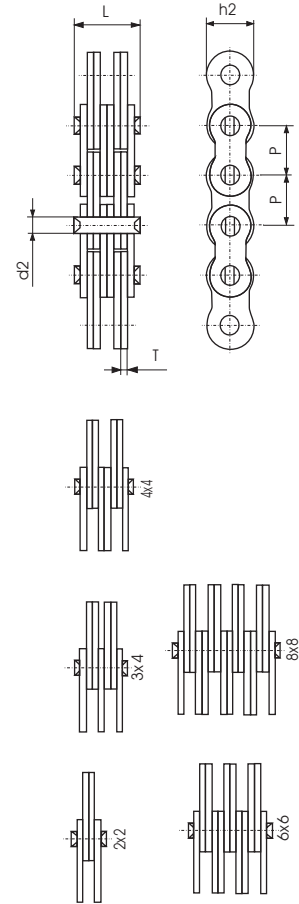
Leaf chains



DIN/ISO Chain No.	Pitch	Plate lacing	Plate depth	Plate thickness	Pin diameter	Pin length	Ultimate tensile strength	Average tensile strength	Weight per meter
	p		h2 max	T max	d2 max	L max	Q min	Q ₀	q
	mm		mm	mm	mm	mm	kN/LB	kN	kg/m
LL0822	12.7	2i2	10.6	1.6	4.45	8.9	18.2/4094	20.4	0.42
LL0844		4i4				15.6	36.4/8188	40.7	0.84
LL0866		6i6				22.0	54.6/12283	60.0	1.24
LL0888		8i8				28.5	72.8/16378	80.0	1.64
LL1022	15.875	2i2	13.7	1.6	5.08	9.2	22.7/5107	25.5	0.54
LL1044		4i4				15.8	45.4/10213	51.0	1.06
LL1066		6i6				22.1	68.1/15321	76.3	1.57
LL1088		8i8				28.8	90.8/20427	101.9	2.10
LL1222	19.05	2i2	16.0	1.85	5.72	10.4	29.5/6637	33.2	0.73
LL1244		4i4				17.9	59.0/13273	66.4	1.44
LL1266		6i6				25.4	88.5/19910	99.7	2.15
LL1288		8i8				32.9	118.0/26547	132.9	2.84
LL1622	25.4	2i2	21.0	3.1	8.28	17.2	58.0/13182	66.7	1.52
LL1644		4i4				29.6	116.0/26363	140.0	2.90
LL1666		6i6				42.4	174.0/39545	208.8	4.30
LL1688		8i8				54.9	232.0/52726	278.0	5.71
LL2022	31.75	2i2	26.4	3.5	10.19	20.1	95.0/21591	109.2	2.33
LL2044		4i4				33.8	190.0/43182	218.5	4.40
LL2066		6i6				50.1	285.0/64773	324.6	6.79
LL2088		8i8				64.0	380.0/86363	435.1	8.90
LL2422	38.1	2i2	33.4	5.0	14.63	28.4	170.0/38363	195.5	4.47
LL2444		4i4				46.3	340.0/77273	380.8	8.22
LL2466		6i6				66.4	510.0/115909	571.2	12.22
LL2488		8i8				86.6	680.0/154545	775.2	16.30
LL2822	44.45	2i2	37.08	6.0	15.90	32.2	200.0/45455	224.0	5.10
LL2844		4i4				56.4	400.0/90909	448.0	9.90
LL2866		6i6				80.8	600.0/136363	672.0	14.60
LL2888		8i8				105.2	800.0/181818	896.0	19.40
LL3222	50.80	2i2	42.0	6.4	17.81	34.8	260.0/59091	291.2	6.20
LL3244		4i4				60.6	520.0/118182	582.4	12.30
LL3266		6i6				86.4	780.0/172727	873.6	18.30
LL3288		8i8				112.2	1040.0/233970	1176.0	24.00
LL4022	63.50	2i2	52.76	8.0	22.89	42.2	360.0/81818	403.2	10.30
LL4044		4i4				74.4	780.0/172723	873.6	20.00
LL4066		6i6				106.5	1080.0/245454	1209.6	30.00
LL4088		8i8				140.0	1440.0/323959	1747.2	39.10
LL4822	76.20	2i2	63.88	10.0	29.24	54.6	560.0/127272	627.2	18.50
LL4844		4i4				92.6	1120.0/254545	1554.4	35.70
LL4866		6i6				133.4	1680.0/377953	1880.0	53.00
LL4888		8i8				174.2	2240.0/509091	2508.8	70.40

Leaf chains

ANSI Chain No.	Pitch	Plate lacing	Plate depth	Plate thickness	Pin diameter	Pin length	Ultimate tensile strength	Average tensile strength	Weight per meter
	p		h2 max	T max	d2 max	L max	Q min	Q ₀	q
	mm		mm	mm	mm	mm	kN/LB	kN	kg/m
AL322	9.525	2i2	7.7	1.3	3.58	6.8	9.0/2045	10.2	0.23
AL344		4j4				11.6	18.0/4090	20.0	0.46
AL422	12.7	2i2	10.4	1.5	3.96	8.3	14.1/3205	16.9	0.39
AL444		4j4				14.4	28.2/6409	35.2	0.74
AL466		6i6				20.5	42.3/9614	52.7	1.13
AL522	15.875	2i2	12.8	2.03	5.08	11.05	22.0/5000	27.5	0.64
AL534		3i4				17.0	33.0/7500	46.0	1.10
AL544		4j4				19.4	44.0/10000	55.0	1.25
AL566		6j6				27.5	66.0/15000	82.5	1.79
AL622	19.05	2i2	15.6	2.42	5.94	13.0	37.0/8409	44.4	0.86
AL644		4j4				22.7	63.7/14450	78.8	1.76
AL666		6j6				32.2	100.1/22750	118.6	2.60
AL688		8i8				42.2	133.4/30317	156.6	3.49
AL822		2i2				16.0	56.7/12886	68.6	1.54
AL844	25.4	4j4	20.5	3.25	7.92	29.4	113.4/25773	135.6	3.00
AL866		6i6				44.2	170.0/38636	202.3	4.46
AL1022		2i2				19.6	88.5/20114	107.1	2.37
AL1044	31.75	4j4	25.6	4.0	9.53	36.4	177.0/40227	203.6	4.68
AL1066		6i6				52.3	265.0/60227	315.3	7.20
AL1088		8i8				68.5	354.0/80454	421.2	9.94
AL1222	38.1	2i2	30.5	4.8	11.10	24.3	127.0/28864	151.1	3.65
AL1244		4i4				43.8	254.0/57727	299.7	7.05
AL1266		6i6				63.2	381.0/86591	426.3	10.50
AL1288		8i8				82.6	508.0/11545	568.4	14.03
AL1444	44.45	4i4	36.4	5.6	12.64	51.3	372.7/84705	413.6	10.34
AL1466		6i6				74.56	559.0/127045	620.4	15.16
AL1644	50.8	4j4	41.6	6.4	14.21	58.0	471.0/107045	522.8	12.98
AL1666		6i6				83.8	706.0/160454	783.6	19.76
AL1688		8i8				109.5	942.0/214090	1045.5	25.47

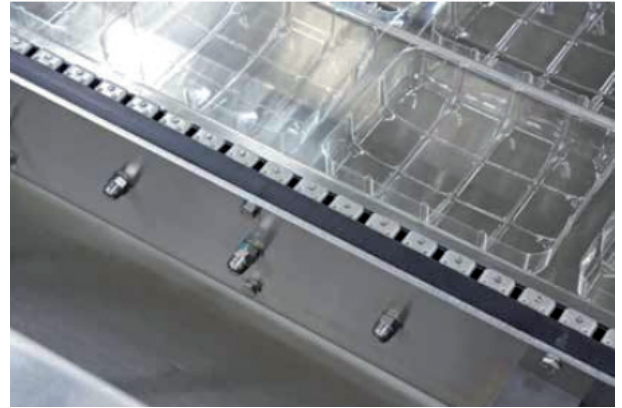


Gripper chains

With more than 20 years of experience in the market, our gripper chains for plastic film transport are widely accepted by both aftermarket users and OEMs alike. To suit different market requirements, this line is available in both ANSI and ISO base chain sizes.

HIGHLIGHTS

- All chains are available in nickel plated and stainless steel construction, for outstanding corrosion resistance.
- Double spring under patent, with differing levels of spring force allow an extremely wide range of materials to be gripped gently.
- Improved clamp design for increased film retention and smooth operation.
- Special high quality lubrication, approved for use in the food industry, for higher wear and corrosion resistance.



AREAS OF APPLICATION

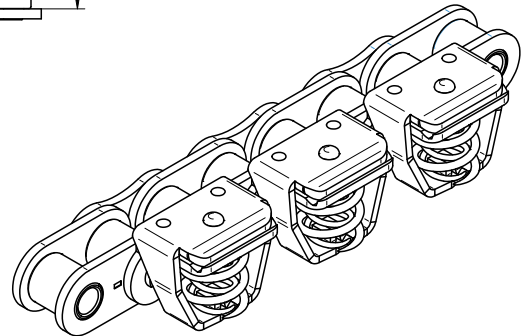
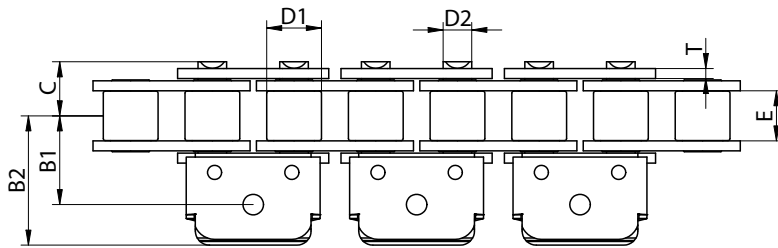
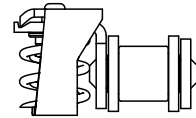
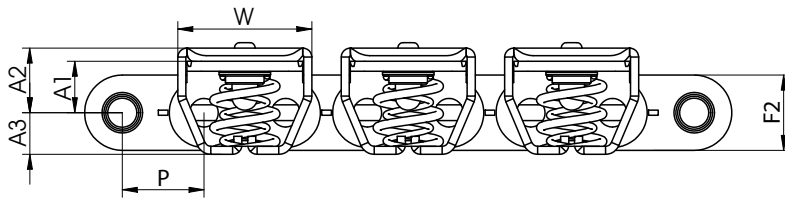
Serie	Clamp Features				Base Chain Material	Corrosion Resistance	Wear Resistance
	Film Retention	Spring Corce	Clamp Material	Spring Material			
Standard 1/2"	Medium	70 N	SS	SS	SS	Excellent	Medium
					Niqueled	Medium	Good
					Delta -Tone	Very good	Good
					Chemical Niqueled	Good	Good
Oscillatory 1/2"	High	80 N	SS	SS	SS	Excellent	Medium
					Niqueled	Medium	Good
					Delta -Tone	Very good	Good
					Chemical Niqueled	Good	Good
Oscillatory 5/8"	Medium	80 N	SS	SS	SS	Excellent	Medium
					Niqueled	Medium	Good
					Delta -Tone	Very good	Good
					Chemical Niqueled	Good	Good
Horizontal 1/2"	Medium	60 N	SS	SS	SS	Excellent	Medium
					Chemical Niqueled	Good	Good
Horizontal 3/4" ASA	Medium	60 N	SS	SS	SS	Excellent	Medium
					Chemical Niqueled	Good	Good

Gripper chains

STANDARD GRIPPER CHAIN

The standard clamp opens vertically with a slight side movement to follow the cam shape. Standard and hard spring versions.

ISO 8B-1: Pitch 1/2"-12,70 mm



DIN/ISO No.	P	Roller diameter	Width between plates	Pin diameter	Pin length		Plate depth	Plate thickness	Clamp						Clamping force
		d1 max	b1 min	d2 max	L max	Lc max	h2 max	T max	B1	B2	A1	A2	A3	W	Q min
	mm	mm	mm	mm	mm	mm	mm	mm	mm	mm	mm	mm	mm	mm	Kn
8B-1	12,700	8,51	7,75	4,45	16,9	18,1	11,7	1,55	13,2	20,8	7,8	9,8	6,7	20,8	75

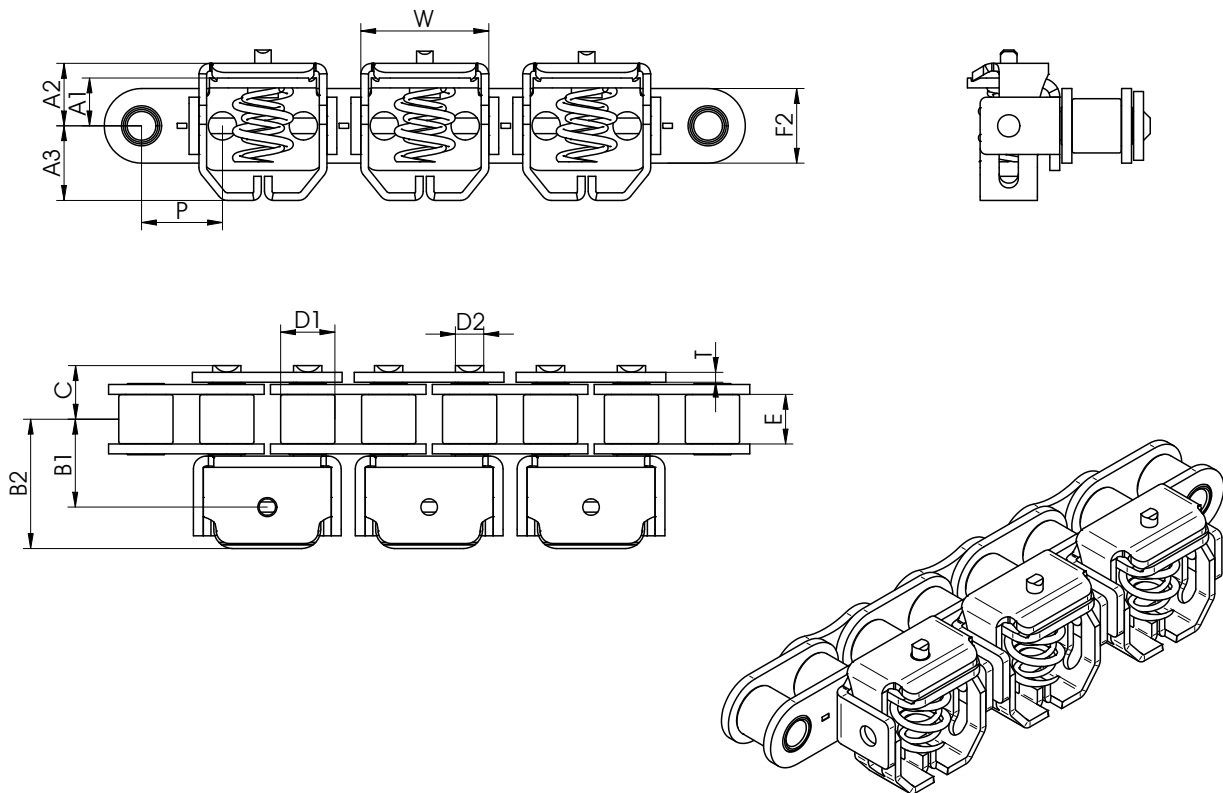
Gripper chains

OSCILLATORY CLAMP GRIPPER CHAIN

The oscillatory clamp allows a vertical movement combined with side rotation to ensure a kick easy film engagement and scrap release.

ISO 8B-1: Pitch 1/2"-12,70 mm

ISO 10B-1: Pitch 5/8"-15,875 mm



DIN/ISO No.	P	Roller diameter	Width between plates	Pin diameter	Pin length		Plate depth	Plate thickness	Clamp						Clamping force	
					L max	Lc max			B1	B2	A1	A2	A3	W		Q min
	mm	mm	mm	mm	mm	mm	mm	mm	mm	mm	mm	mm	mm	mm	mm	Kn
8B-1 OC	12,700	8,51	7,75	4,45	16,9	18,1	11,7	1,55	13,3	21,2	8	10,03	11,2	19,9		80
10B-1 OC	15,875	10,16	9,6	5,08	19,2	20,7	14,25	1,6	14,5	24,6	9	11,3	12,4	23,6		80

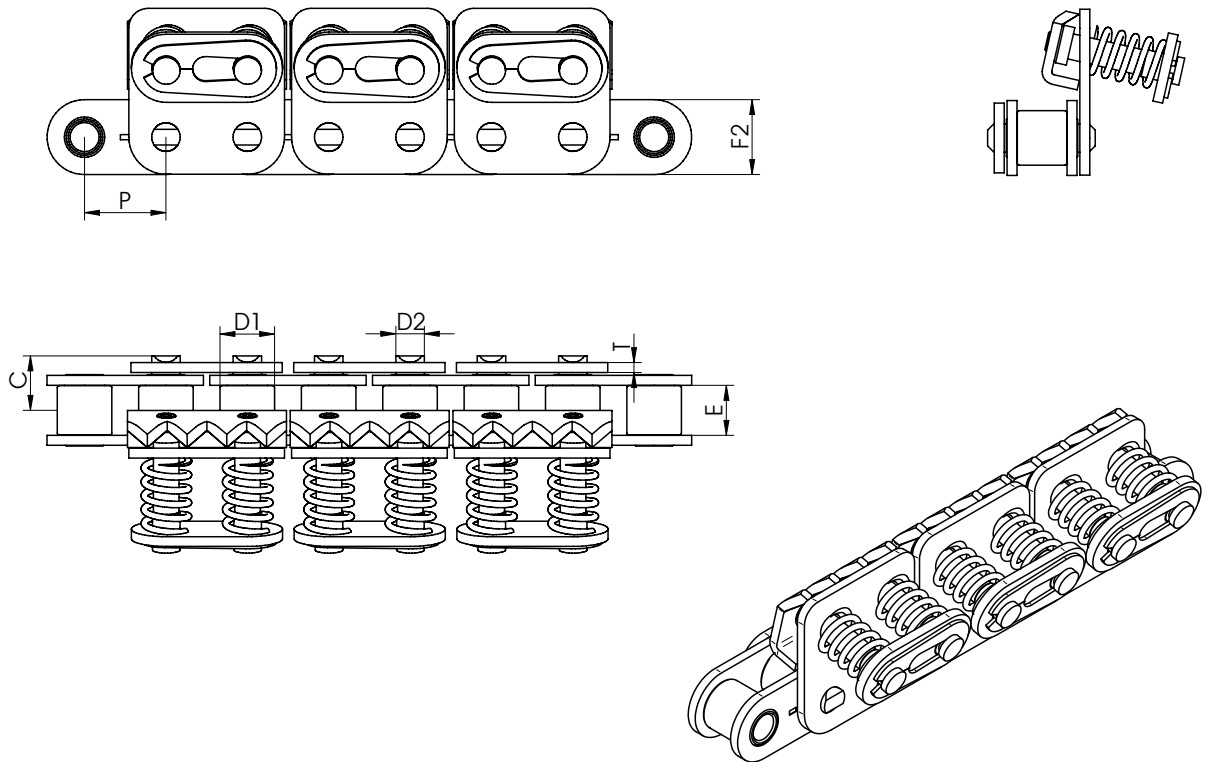
Gripper chains

HORIZONTAL CLAMP GRIPPER CHAIN

Two springs of 30N each for uniform film clamping and control of film tension.

ISO 8B-1: Pitch 1/2"-12,70 mm

ISO 12A-1: Pitch 3/4"-19,05 mm

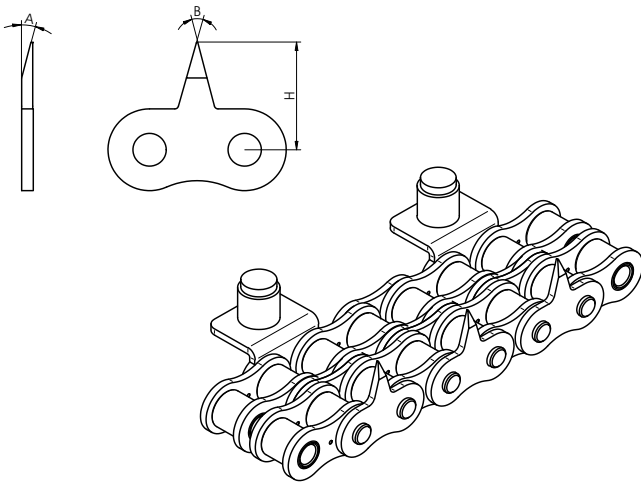


DIN/ISO No.	P	Roller diameter	Width between plates	Pin diameter		Pin length		Plate depth	Plate thickness	Clamp						Clamping force
		d1 max	b1 min	d2 max	L max	Lc max	h2 max	T max	B1	B2	A1	A2	A3	W	Q min	
	mm	mm	mm	mm	mm	mm	mm	mm	mm	mm	mm	mm	mm	mm	mm	Kn
8B-1 HC	12,700	7,7	7,7	4,45	16,9	18,1	11,7	1,55	21,6	6,25	17,35	4,75	24,3		60	
12A-1 HC	19,050	12,7	11,68	5,98	25,4	27,3	16,6	2,4	21,6	7,21	24,71	7,75	34,55		60	

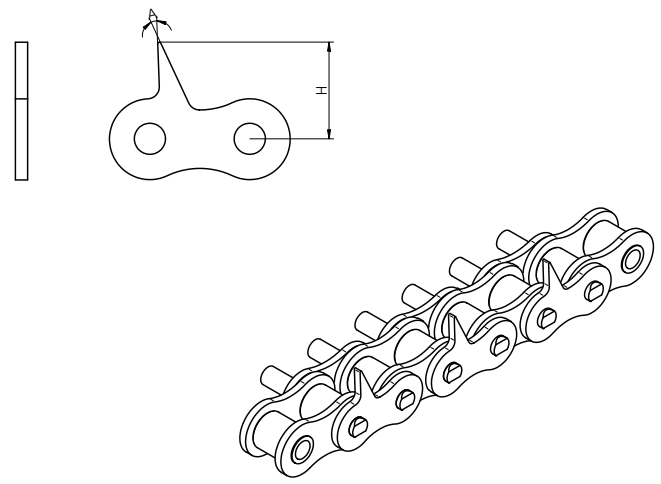
Sticker chains

HORIZONTAL CLAMP GRIPPER CHAIN

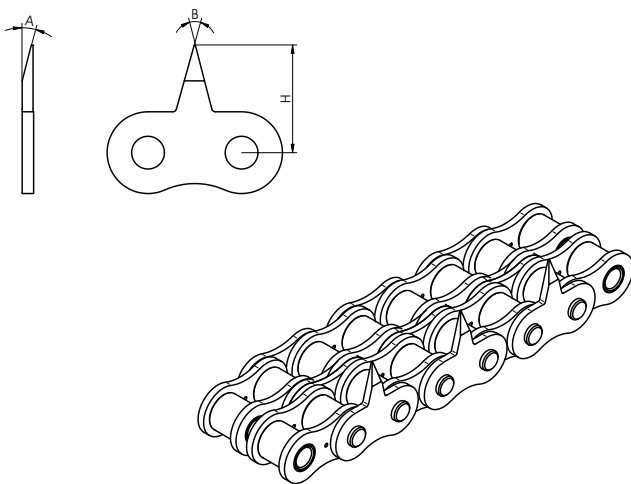
IRIS thermoforming sticker chains are designed and manufactured to the highest standard, in order to meet customer specific requirements for applications. Available chain sizes include ANSI 40, ANSI 50, ISO 8b and ISO 10b in single or multiple strands. A selection of sticker profiles could satisfy your various requirements for different packing applications. These special chains are designed for thermoforming applications and unusual conveying applications such as creating polystyrene plates, shrink wrap, blister packs and many other plastic items.



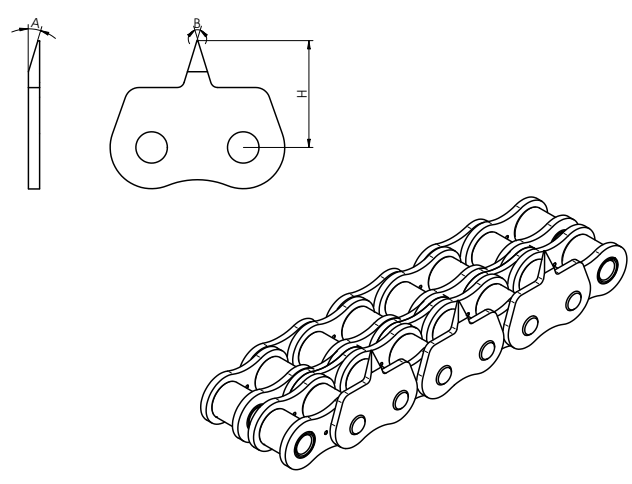
Chain No.	P	A	B	H
	mm	mm	mm	mm
8B	12.700	20°	32°	15.1
8B	12.700	15°	30°	14.5
10B	15.875	20°	30°	18.9



Chain No.	P	L	A	H
	mm			mm
8B	12.700		23°	12.3



Chain No.	P	A	B	H
	mm			mm
8B	12.700	20°	32°	14.1



Chain No.	P	A	B	H
	mm			mm
8B	12.700	17°	34°	14.85

