

HONGSBELT® Modular Conveyor Belt, the combination of preciseness and artistry which creates new conveying concept. As the leader and largest manufacturer of Modular Belt in China, HONGSBELT® not only have complete production lines to meet different application requirement, but also can provide comprehensive product knowledge and experience. Through ten years' innovation and R&D, there are more than 600 types different in material and color, which provide you with perfect support in conveying field.

HONGSBELT® Modular Conveyor Belt makes an immense difference for the conveying in Food & Non-food industries for its strong, durable, low maintenance and easy to clean features.



**GLOBAL RESOURCES AND BUSINESS NO BOUNDARY**



**OUR QUALIFICATION**



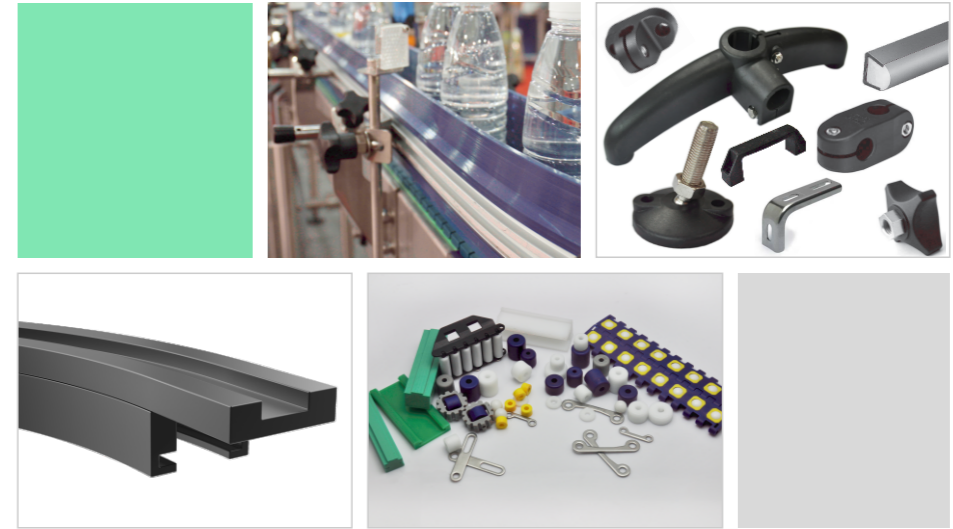
HONGSBELT® is one of the most famous manufacturer and supplier of Industrial belt in the world market with strong power in R&D, the products including: Modular Conveyor belt, PU/PVC Conveyor belt, Elevator belt, special processing high-speed Timing belt etc. The company has passed ISO9001:2000 quality Certification and FDA Certification.

HONGSBELT® put focus on Customers' demand, and insists on constant innovation to meet customers' needs, bring better conveying system with better quality products.

**HONGSBELT International (HK) Limited**

Add: No.3 SongShan Road, XinMu Street, PingHu, ShenZhen, Guangdong, China (518111)  
Tel: 0086-755-89973510  
Fax: 0086-755-89974246  
Email: info@hongsbelt.com  
Web: www.hongsbelt.com.cn

# Perfect Conveyor Components



www.hongsbelt.com.cn

## Preface

HONGSBELT with fifteen glorious years of development since its foundation in 1999, has shifted its business from simply selling traditional conveyor belts to providing solutions of the smart conveyor belts, integrating R&D, manufacturing and sales. We are committed to provide services for our customers with unchanging sincerity and devotion.

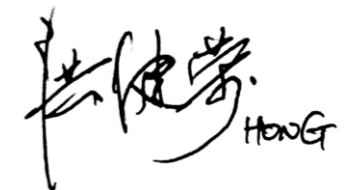
Adhering to the pursuit belief of "Innovation must be made", HONGSBELT team has actively thrown themselves into R&D with a heavy investment on establishing R&D Department, Refine Modular Department, Plastic & Shaping Workshop, etc. and dedicated themselves to development of the smart modular conveyor belts. In the meantime, HONGSBELT has conducted global marketing and created an excellent annual turnover increase of 30%. With over 60 marketing sites established and covering every corner worldwide at present, HONGSBELT has realized the expectation of being based in China and taking the whole world in view.

In terms of pursuing product quality, we still stand at the original starting point – technology orientation. While providing complete supply chain product system for worldwide agents as well as OEM, we know well the absolute principle that the most important mutual dependence relationship lies in technology support.

Therefore, besides sticking to product quality first, we employ the perfect technology to render the most valuable services! With the whole manpower of technology departments, this technology engineering manual is compiled to give all users of HONGSBELT products an access to grasp the most accurate design data in the fastest way, serve as evidence for the end-users and participating engineers and technicians and provide the best reference for the planning and organization of various conveying equipment systems.

In connection with the foreword, our passion for industry automation shall never fade. On behalf of all the staff of HONGSBELT, we here deliver to our customers that from today on, HONGSBELT shall offer professional services with broader vision to establish a benchmark for the world smart conveyor belt industry. All Hongsbelt product users shall witness us to realize our commitment. That is: products of highest quality and most professional services.

President of HONGSBELT:



HONG

## Company Profile

HONGBELT® provides the perfect accessories for conveyor lines: high-strength wear-resistant low-wear guide rails and accessories. Perfect accessories can be fully available for the assembly, support and guidance of conveyor lines, providing quick solutions. HONGBELT® provides numerous innovative solutions to meet your various production needs, and main products include:

**Wearing strip (wear strip)** - HONGBELT® provides regular wearing strips, flat wearing strips, heteroideus wearing strips, T-shaped wearing strips for turning conveyors, high-strength wear-resistant backing strips for beverage bottles, wearing strips for spiral turning conveyors, clip-on wearing strips, clip-on wearing plates and J-shaped wearing strips.

**Curved seats and guide rails of turning track** - HONGBELT® curved seats of turning tracks can provide guiding structure, and then offer high-quality running surface for chain plates and chain network under long-term operations. HONGBELT® guide rails are characterized by stainless shells and embedded high-quality materials. A variety of embedded materials are available: UHMW, unique low-friction materials and anti-static materials. All materials have passed the FDA certification, and can be used in most application environment.

**Roller and Guard rail** - HONGBELT® unique low-friction guardrail can improve the fluency of products at the combination and diversion.

**Accessories for modular conveyor belts:** flight, scoop flight, 45° inclining flight, side walls, SUS304Rods&Links, Pusher, sprockets, We have many kinds of specifications that can fully meet your various design needs.

In addition to the accessories for modular conveyor belts, we can also provide the following common accessories:

1. Holders and positioning devices - guide rail clamps, metal guide rail holders for plastic machines, handles, and link blocks compose a fixed combination. HONGBELT® holders can quickly adjust the width of the guardrail according to the size of conveyor bottle.
2. Framework and supporters - threaded pipe ends, conditional supporting feet, shock pads, bipods and tripods, column caps and side bearings can provide reliable structures for the conveyor lines, with favorable adjustability.
3. Rollers and rotary products - HONGBELT® gravity conveyors, rotating sprocket, bearings and customized plastic rollers can meet various conveyor requirements.
4. Customized plastic processing - HONGBELT® has strong R&D and processing capabilities, so it can provide high-quality plastic products according to your specific needs.

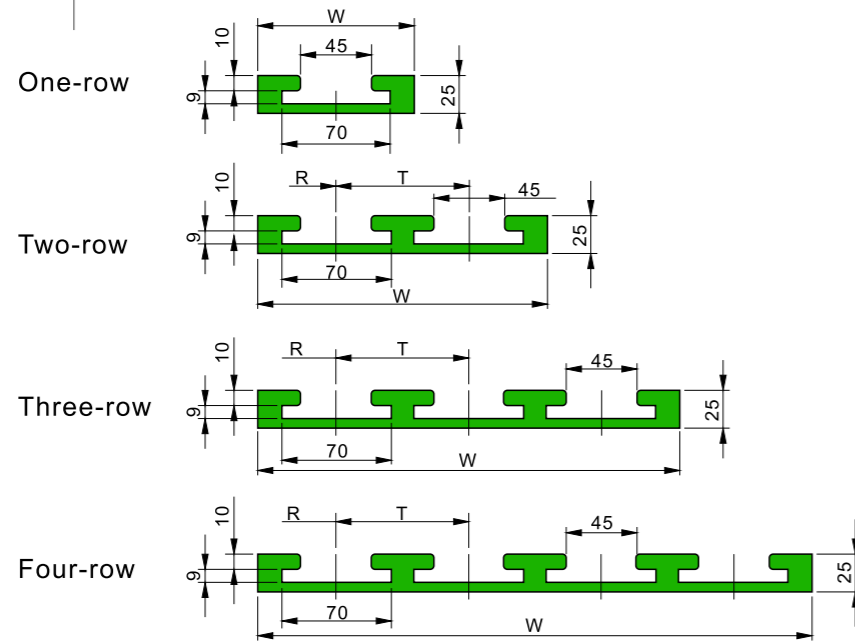
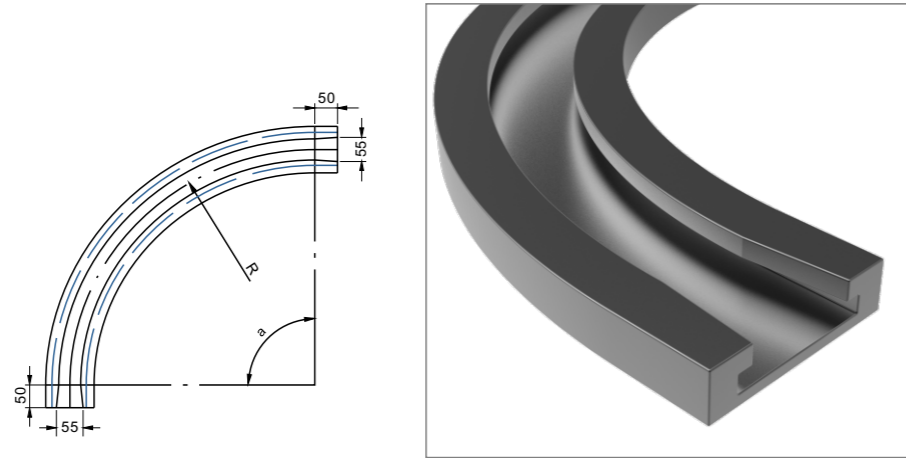
## Contents

Curved seats of turning guide rail	1
Finger plate for Seats of Curved Guide Rail	10
High-strength chain guide rail	12
Guardrail	19
Cushion rail	35
Bottle-hanging strip	39
Heteroideus wearing strip	42
Accessories	56

**Curved seats of turning guide rail**

**880TAB/881TAB**  
series of Uighur guide lateral bending chain guide rail

- Materials are black ultrahigh molecular polyethylene.
- The highest temperature is 90°C.
- Angle of bending guide rail  $\alpha=15^\circ \sim 19^\circ$
- 880TAB-K325/K450 and SS881TAB-K325/K450 have the same width of chain plates and bending rails, and straight rails can be used universally.



**Parameters of 880TAB/881TAB series of bending guide rails**

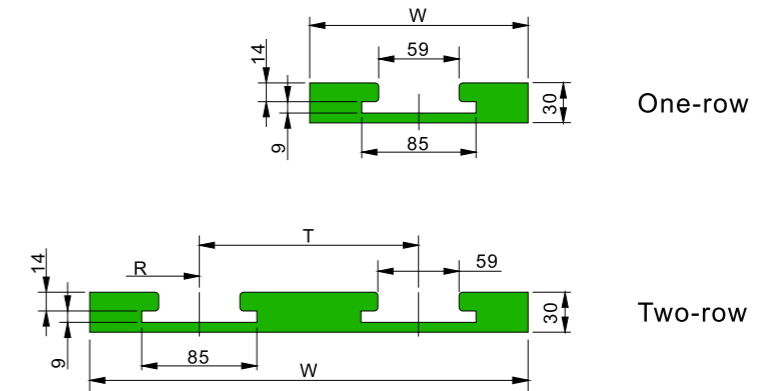
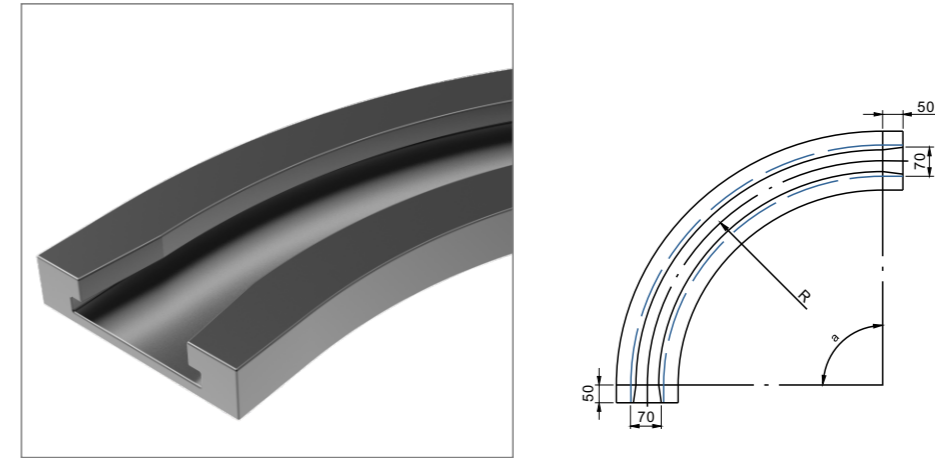
Name	Model	Minimum center radius R	Width W	Spacing T
880TAB-K325 One-row	HS-880TAB-K325-R500-100-1	500	100	-
880TAB-K325 Two-row	HS-880TAB-K325-R500-185-2	500	185	85
880TAB-K325 Three-row	HS-880TAB-K325-R500-270-3	500	270	85
880TAB-K325 Four-row	HS-880TAB-K325-R500-355-4	500	355	85
880TAB-K450 One-row	HS-880TAB-K450-R610-130-1	610	130	-
880TAB-K450 Two-row	HS-880TAB-K450-R610-250-2	610	250	120
880TAB-K450 Three-row	HS-880TAB-K450-R610-370-3	610	370	120
880TAB-K450 Four-row	HS-880TAB-K450-R610-490-4	610	490	120
SS881TAB-K600 One-row	HS-SS881TAB-K600-R610-160-1	610	160	-
SS881TAB-K600 Two-row	HS-SS881TAB-K600-R610-320-2	610	320	160
SS881TAB-K750 One-row	HS-SS881TAB-K750-R610-200-1	610	200	-
SS881TAB-K750 Two-row	HS-SS881TAB-K750-R610-400-2	610	400	200

Identification of bending rail models: chain plate model + center radius of bending rail + width of bending rail + quantity of bending rails

**Curved seats of turning guide rail**

**882TAB** series of dovetail lateral bending chain guide rail

- Materials are black ultrahigh molecular polyethylene.
- The highest temperature is 90°C.
- Angle of bending guide rail  $\alpha=15^\circ \sim 19^\circ$



**Parameters of 882TAB series of bending guide rails**

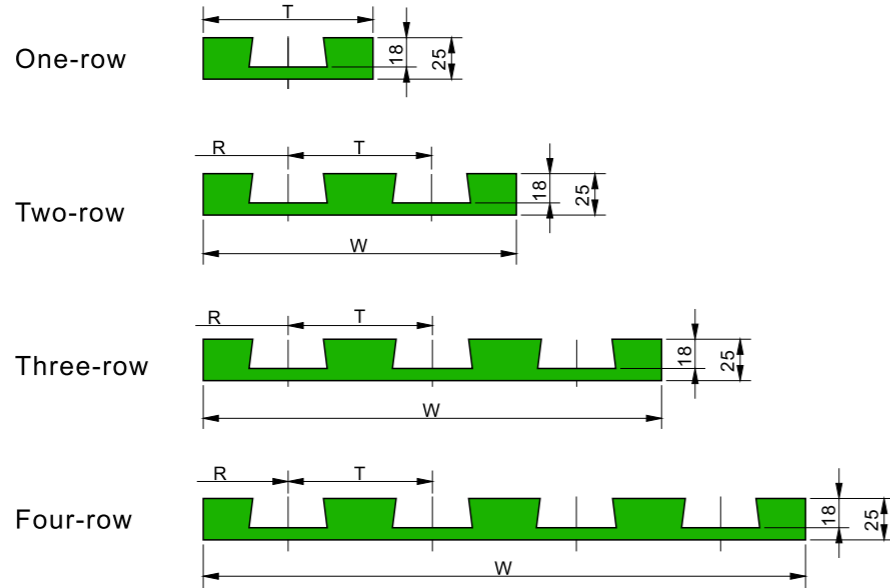
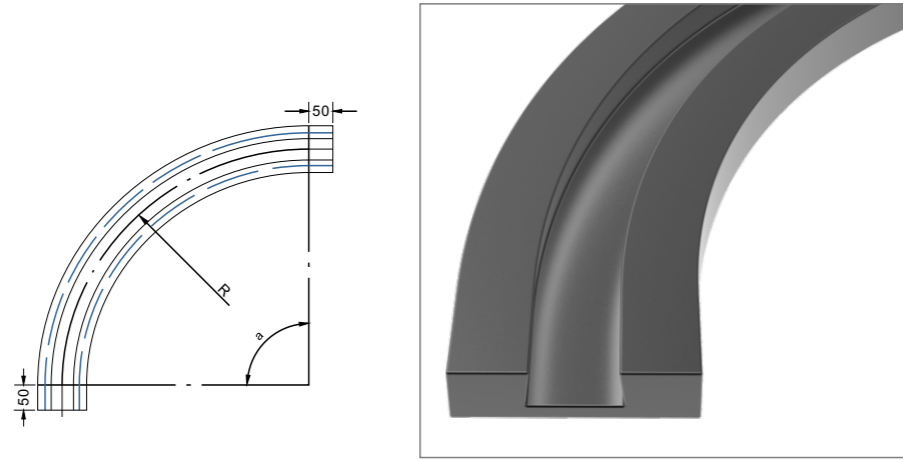
Name	Model	Minimum center radius R	Width W	Spacing T
882TAB-K500 One-row	HS-882TAB-K500-R610-130-1	610	130	-
882TAB-K500 Two-row	HS-882TAB-K500-R610-260-2	610	260	130
882TAB-K600 One-row	HS-882TAB-K600-R610-160-1	610	160	-
882TAB-K600 Two-row	HS-882TAB-K600-R610-320-2	610	320	160
882TAB-K750 One-row	HS-882TAB-K750-R610-200-1	610	200	-
882TAB-K750 Two-row	HS-882TAB-K750-R610-400-2	610	400	200
882TAB-K1000 One-row	HS-882TAB-K1000-R610-260-1	610	260	-
882TAB-K1000 Two-row	HS-882TAB-K1000-R610-520-2	610	520	260
882TAB-K1200 One-row	HS-882TAB-K1200-R610-310-1	610	310	-
882TAB-K1200 Two-row	HS-882TAB-K1200-R610-620-2	610	620	310

Identification of bending rail models: chain plate model + center radius of bending rail + width of bending rail + quantity of bending rails

**Curved seats of turning guide rail**

**880 series of dovetail lateral bending chain guide rail**

- Materials are black ultrahigh molecular polyethylene.
- The highest temperature is 90°C.
- Angle of bending guide rail  $a=15^\circ \sim 19^\circ$



**Parameters of 880 series of dovetail lateral bending chain guide rail**

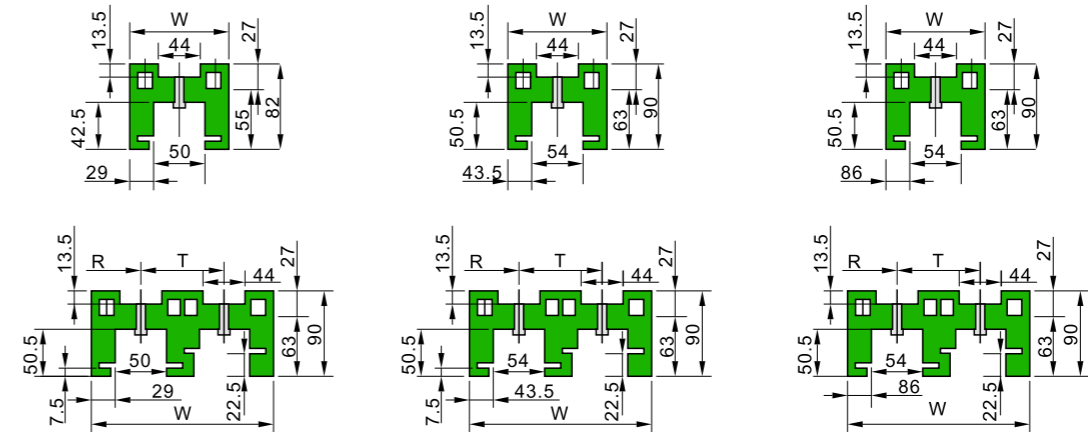
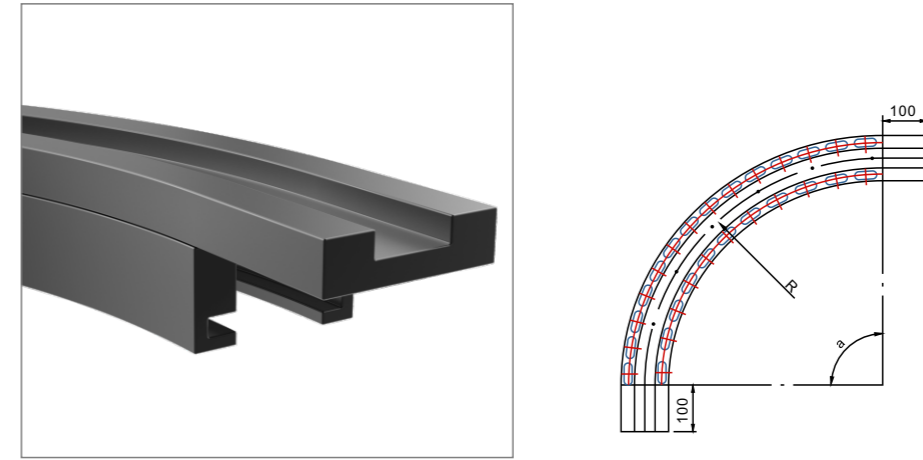
Name	Model	Minimum center radius R	Width W	Spacing T
880-K325 One-row	HS-880-K325-R500-100-1	500	100	—
880-K325 Two-row	HS-880-K325-R500-185-2	500	185	85
880-K325 Three-row	HS-880-K325-R500-270-3	500	270	85
880-K325 Four-row	HS-880-K325-R500-355-4	500	355	85
880-K450 One-row	HS-880-K450-R610-130-1	610	130	—
880-K450 Two-row	HS-880-K450-R610-150-2	610	250	120
880-K450 Three-row	HS-880-K450-R610-370-3	610	370	120
880-K450 Four-row	HS-880-K450-R610-490-4	610	490	120

Identification of bending rail models: chain plate model + center radius of bending rail + width of bending rail + quantity of bending rails

**Curved seats of turning guide rail**

**880M series of magnetic lateral bending chain guide rail**

- Materials are black ultrahigh molecular polyethylene + magnetic iron + screw sets.
- The highest temperature is 90°C.
- Angle of bending guide rail  $a=15^\circ \sim 19^\circ$



880M-K325

880M-K450

880M-K750

**Parameters of 880M series of magnetic lateral bending chain guide rail**

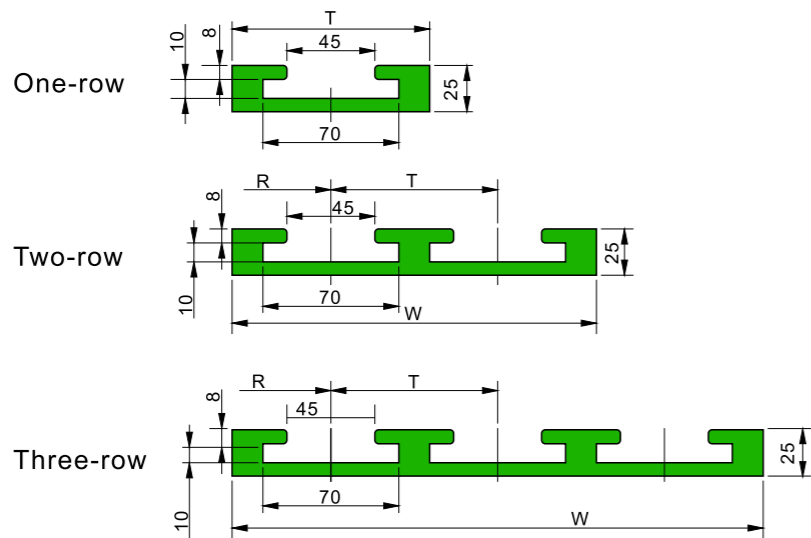
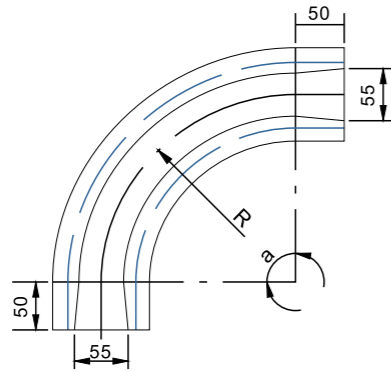
Name	Model	Minimum center radius R	Width W	Spacing T
880M-K325 One-row	HS-880M-K325-R500-100-1	500	100	—
880M-K325 Two-row	HS-880M-K325-R500-185-2	500	185	85
880M-K325 Three-row	HS-880M-K325-R500-270-3	500	270	85
880M-K325 Four-row	HS-880M-K325-R500-355-4	500	355	85
880M-K450 One-row	HS-880M-K450-R610-130-1	610	129	—
880M-K450 Two-row	HS-880M-K450-R610-250-2	610	249	120
880M-K450 Three-row	HS-880M-K450-R610-370-3	610	369	120
880M-K450 Four-row	HS-880M-K450-R610-490-4	610	489	120
880M-K750 One-row	HS-880M-K750-R610-214-1	610	214	—
880M-K750 Two-row	HS-880M-K750-R610-410-2	610	410	196

Identification of bending rail models: chain plate model + center radius of bending rail + width of bending rail + quantity of bending rails

**Curved seats of turning guide rail**

**880TAB-RT series of small radius lateral bending chain guide rail**

- Materials are black ultrahigh molecular polyethylene.
- The highest temperature is 90°C.
- Angle of bending guide rail  $a=15^\circ \sim 19^\circ$



**Parameters of 882TAB-RT series of bending guide rails**

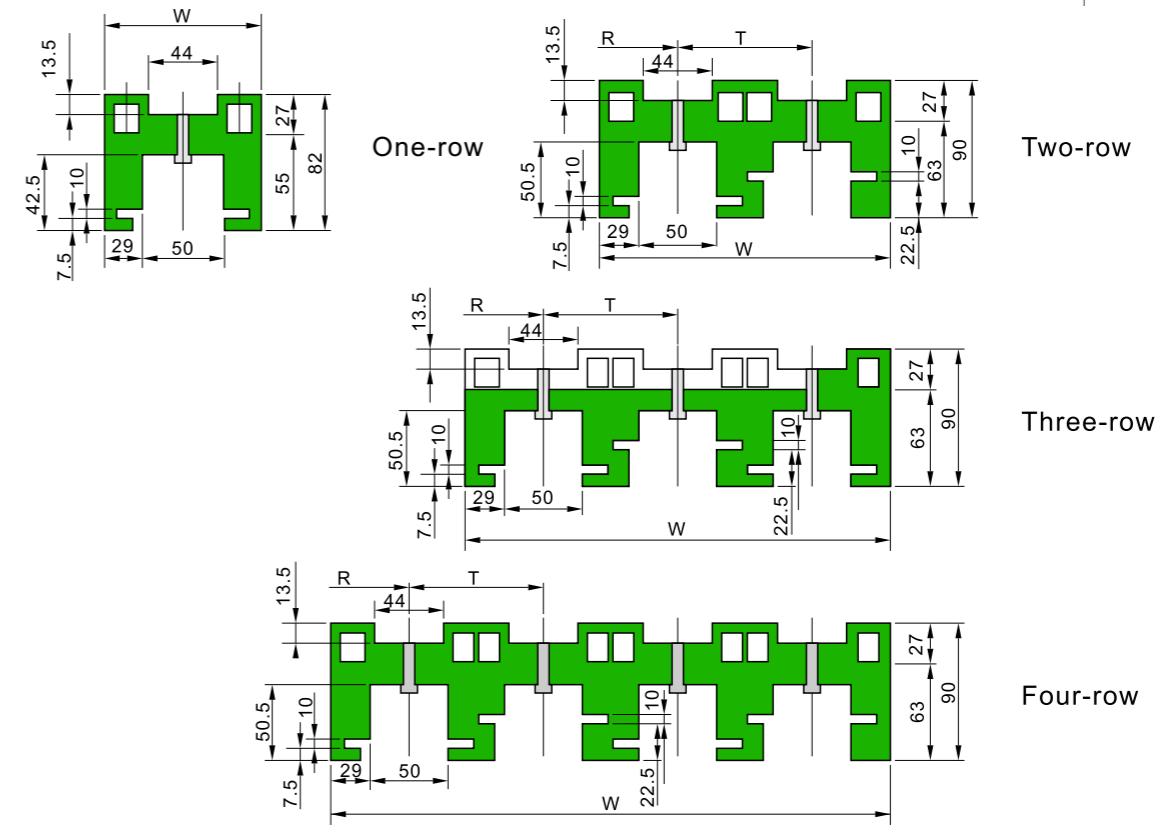
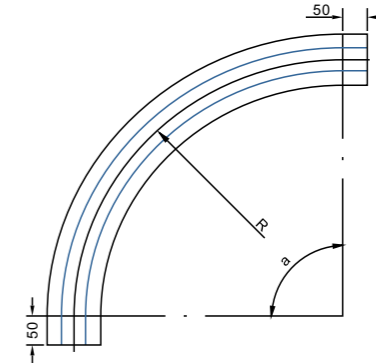
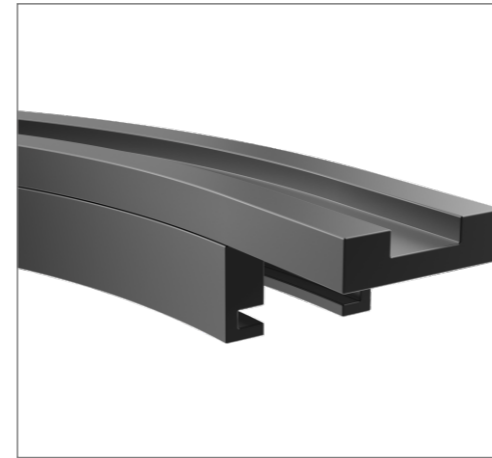
Name	Model	Minimum center radius R	Width W	Spacing T
880TAB-RT-K325 One-row	HS-880TAB-RT-K325-R200-100-1	200	100	—
880TAB-RT-K325 Two-row	HS-880TAB-RT-K325-R200-185-2	200	185	85
880TAB-RT-K325 Three-row	HS-880TAB-RT-K325-R200-270-3	200	270	85
880TAB-RT-K450 One-row	HS-880TAB-RT-K450-R200-130-1	200	130	—
880TAB-RT-K450 Two-row	HS-880TAB-RT-K450-R200-250-2	200	250	120
880TAB-RT-K450 Three-row	HS-880TAB-RT-K450-R200-370-3	200	370	120

Identification of bending rail models: chain plate model + center radius of bending rail + width of bending rail + quantity of bending rails

**Curved seats of turning guide rail**

**1050 series of heavy lateral bending chain guide rail**

- Materials are black ultrahigh molecular polyethylene.
- The highest temperature is 90°C.
- Angle of bending guide rail  $a=15^\circ \sim 19^\circ$



**Parameters of 1050 series of heavy lateral bending chain guide rail**

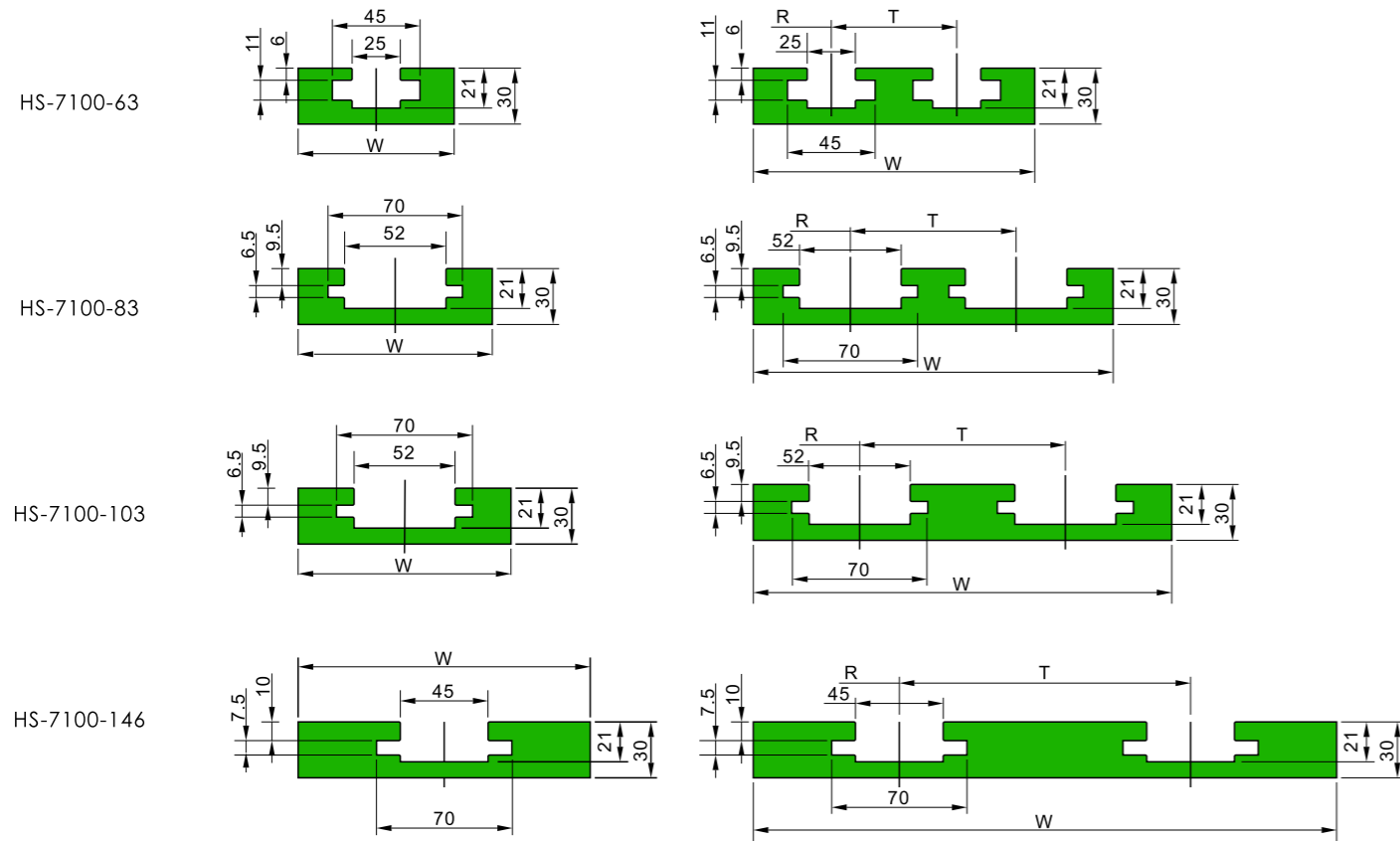
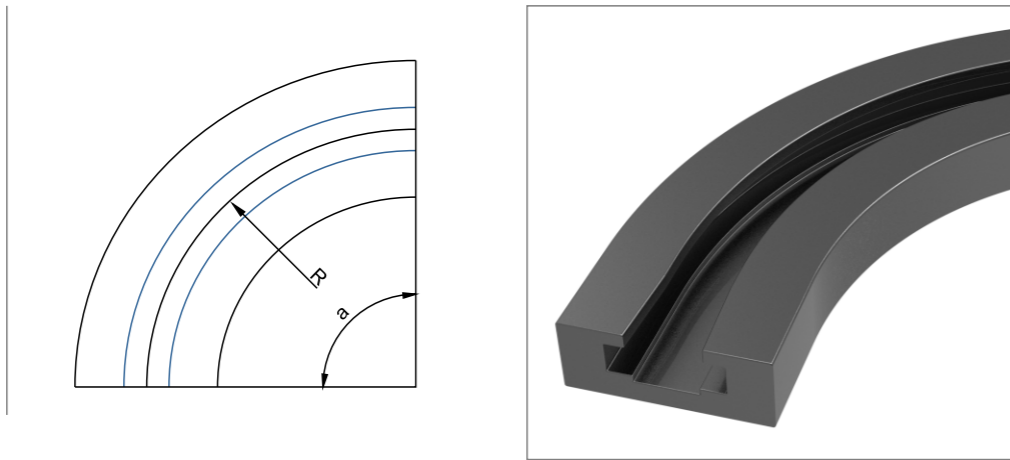
Name	Model	Minimum center radius R	Width W	Spacing T
1050-K325 One-row	HS-1050-K325-R500-100-1	500	100	—
1050-K325 Two-row	HS-1050-K325-R500-185-2	500	185	85
1050-K325 Three-row	HS-1050-K325-R500-270-3	500	270	85
1050-K325 Four-row	HS-1050-K325-R500-355-4	500	355	85

Identification of bending rail models: chain plate model + center radius of bending rail + width of bending rail + quantity of bending rails

**Curved seats of turning guide rail**

**Tooth-shaped chain bending guide rail**

- Materials are black ultrahigh molecular polyethylene.
- The highest temperature is 90°C.
- Angle of bending guide rail  $\alpha=15^\circ \sim 19^\circ$



**Parameters of Tooth-shaped chain bending guide rail**

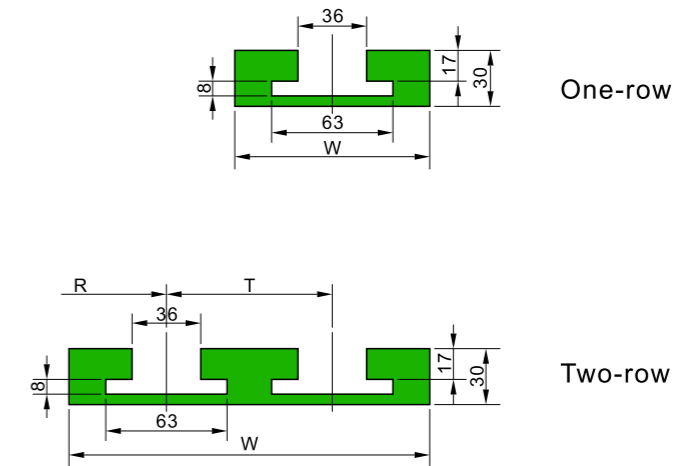
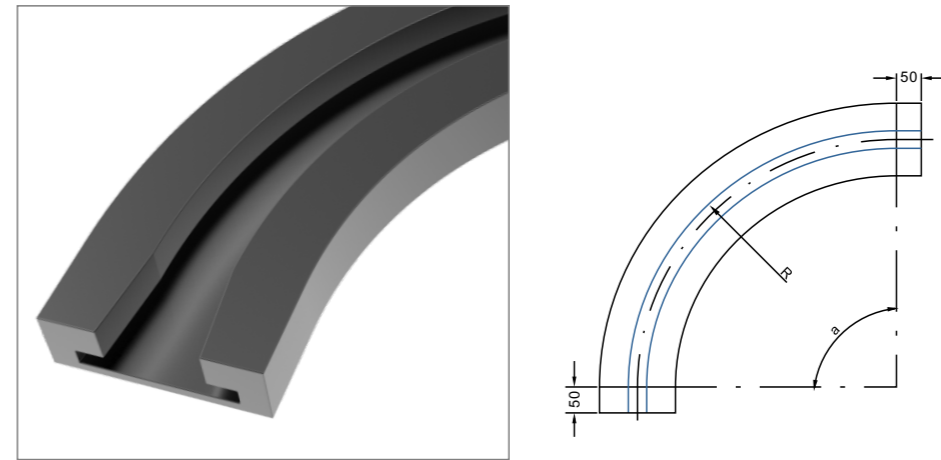
Name	Model	Minimum center radius R	Width W	Spacing T
63T-One-row	HS-7100-63-R150-80-1	150	80	—
63T-Two-row	HS-7100-63-R150-185-2	150	145	65
83T-One-row	HS-7100-83-R150-100-1	150	100	—
83T-Two-row	HS-7100-83-R150-185-2	150	185	85
103T-One-row	HS-7100-103-R250-110-1	250	110	—
103T-Two-row	HS-7100-103-R250-215-2	250	215	105
146T-One-row	HS-7100-146-R250-150-1	250	150	—
146T-Two-row	HS-7100-146-R250-300-2	250	300	150

Identification of bending rail models: chain plate model + center radius of bending rail + width of bending rail + quantity of bending rails

**Curved seats of turning guide rail**

**1873 series of Bending guide rail**

- Materials are black ultrahigh molecular polyethylene.
- The highest temperature is 90°C.
- Angle of bending guide rail  $\alpha=15^\circ \sim 19^\circ$



**Parameters of 1873 series of Bending guide rail**

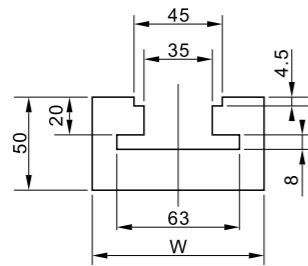
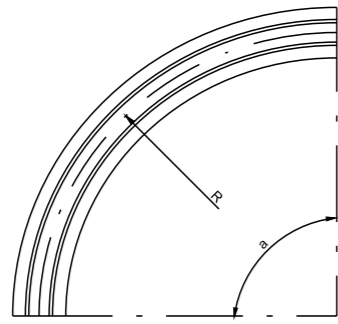
Name	Model	Minimum center radius R	Width W	Spacing T
1873-K325 One-row	HS-1873-K325-R400-100-1	400	100	—
1873-K325 Two-row	HS-1873-K325-R400-185-2	400	185	85
1873-K450 One-row	HS-1873-K450-R400-130-1	400	130	—
1873-K450 Two-row	HS-1873-K450-R400-250-2	400	250	120
1873-K600 One-row	HS-1873-K600-R500-160-1	500	160	—
1873-K600 Two-row	HS-1873-K600-R500-320-2	500	320	160
1873-K750 One-row	HS-1873-K750-R500-200-1	500	200	—
1873-K750 Two-row	HS-1873-K750-R500-400-2	500	400	200
1873-K1000 One-row	HS-1873-K1000-R500-260-1	500	260	—
1873-K1000 Two-row	HS-1873-K1000-R500-520-2	500	520	260
1873-K1200 One-row	HS-1873-K1200-R500-310-1	500	310	—
1873-K1200 Two-row	HS-1873-K1200-R500-620-2	500	620	310

Identification of bending rail models: chain plate model + center radius of bending rail + width of bending rail + quantity of bending rails

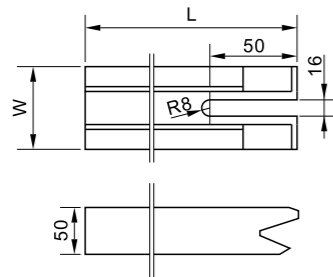
**Curved seats of turning guide rail**

**Vertical chain guide rail**

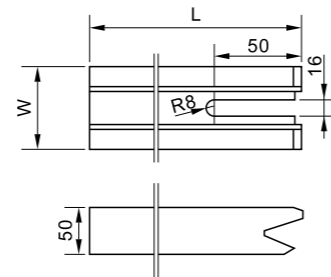
- Materials are black ultrahigh molecular polyethylene.
- The highest temperature is 90°C.
- Angle of bending guide rail  $a=15^\circ \sim 19^\circ$



End view drawing of vertical chain guide rail



Straight guide rail of vertical chain input terminal



Straight guide rail of vertical chain output terminal

**Parameters of vertical chain guide rail**

Name	Model	Minimum center radius R	Width W	Spacing T
One-row bending rail of Vertical chain	HS-R500-88-1	500	88	—
Straight guide rail of vertical chain input terminal	HS-L418-88-1	418	88	—
Straight guide rail of vertical chain output terminal	HS-L418-88-1	418	88	—

Identification of bending rail models: chain plate model + center radius of bending rail + width of bending rail + quantity of bending rails